

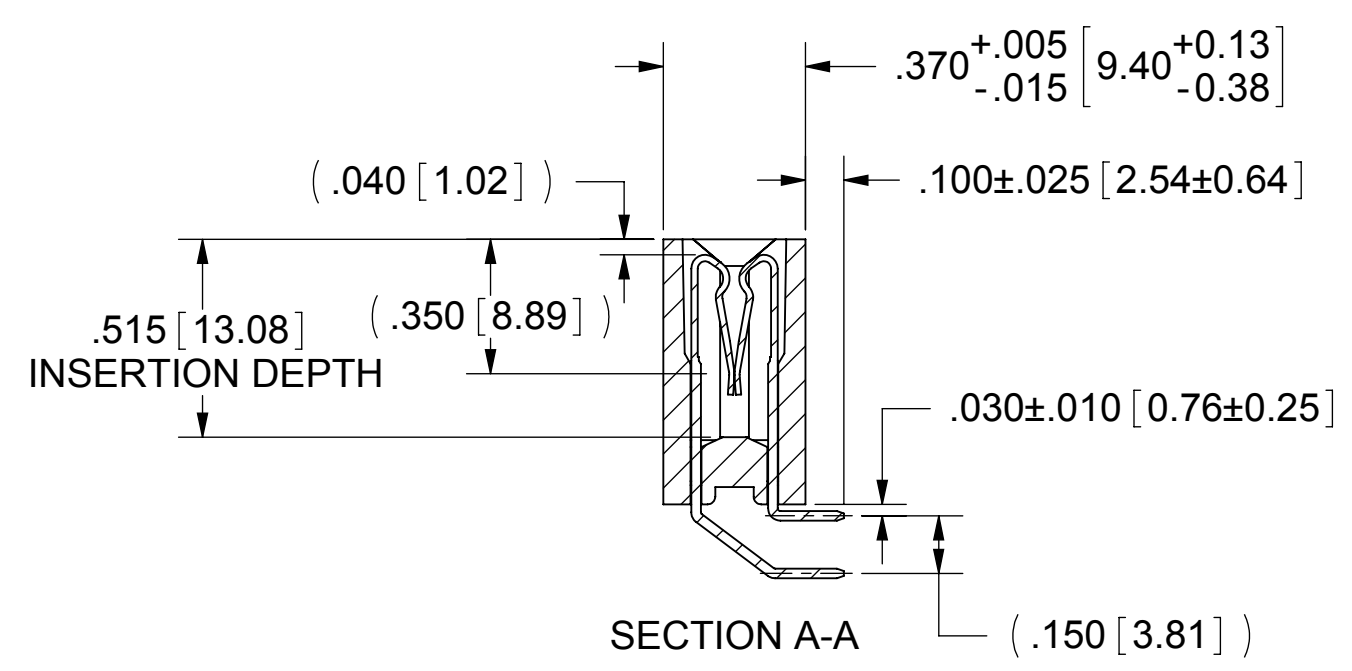
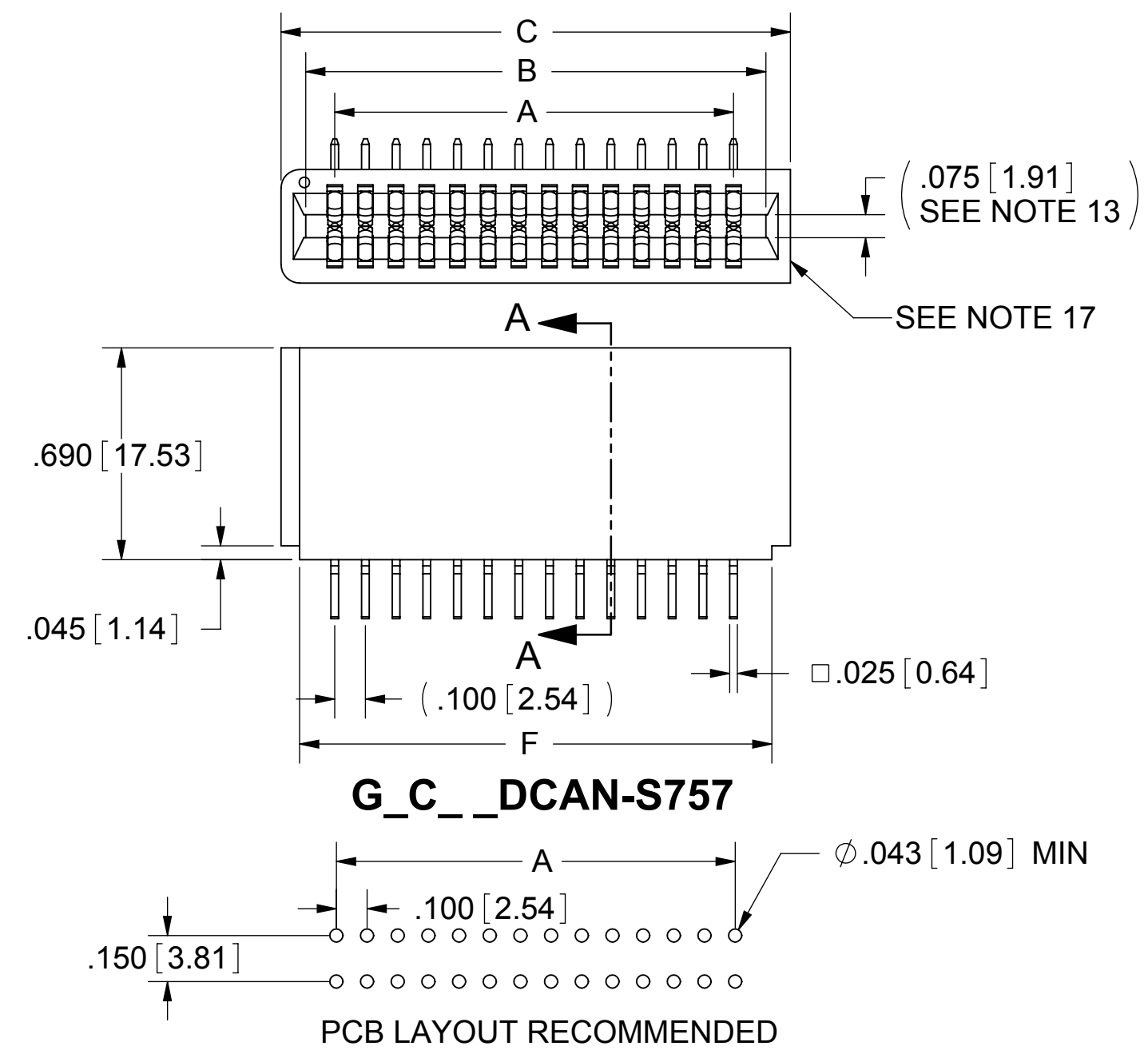
PART NUMBER CODING

G C DCA - S757

PLATING
 ALL PLATINGS HAVE .000050" NICKEL UNDERPLATE
 CONTACT SURFACE TERMINATION
 B = .000010" GOLD .000100" PURE TIN, MATTE
 C = .000030" GOLD .000100" PURE TIN, MATTE

NUMBER OF POSITIONS
 (CONTACTS PER ROW)
MOUNTING STYLE
 N = NO MOUNTING EARS
 B = OPEN CARD SLOT (PAGE 2)

REVISIONS				
REV.	ECO. NO	DESCRIPTION	DATE	BY
A	2494	INITIAL RELEASE	12/1/2011	JH



- NOTES:**
- INSULATOR MATERIAL: PA9T
 - CONTACT MATERIAL: PHOSPHOR BRONZE
 - PLATING: SEE PART NUMBER CODING
 - OPERATING TEMPERATURE: -65°C TO +125°C
 - PROCESSING TEMP: 260°C FOR 20 SECONDS MAX
 - UL FLAMMABILITY RATING: 94V-0
 - DIELECTRIC WITHSTANDING VOLTAGE: 750 VAC MINIMUM AT SEA LEVEL
 - CURRENT RATING: 3 AMP PER CONTACT
 - CONTACT RESISTANCE: 30 MILLI OHMS MAX
 - INSULATION RESISTANCE: 5000 MEGA OHMS
 - DURABILITY: 500 CYCLES MIN
 - CONNECTOR IDENTIFICATION: THE PART SHALL BE MARKED WITH A PART NUMBER AND LOT CODE
 - BOARD THICKNESS ACCOMMODATED: .062 ± .008 [1.57 ± 0.20]
 - INSERTION FORCE: 16 OZ MAX PER CONTACT PAIR WHEN USING A .062 [1.57] TEST BLADE
INTERNAL INSPECTION TO BE PER SULLIN'S WORK INSTRUCTION WI7.3-01
 - WITHDRAWAL FORCE: 1 OZ MIN PER CONTACT PAIR USING .062 [1.57] PCB
 - MODIFICATION: MBB CONTACT, RIGHT ANGLE BEND CONNECTOR
 - 04 THRU 48 POSITIONS HAVE SQUARE CORNER ON ONE END, 50-POSITION HAS ROUND CORNER ON BOTH ENDS.

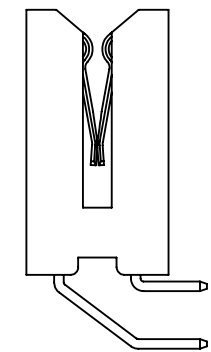
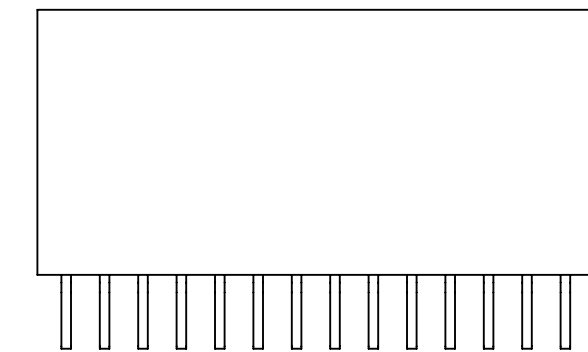
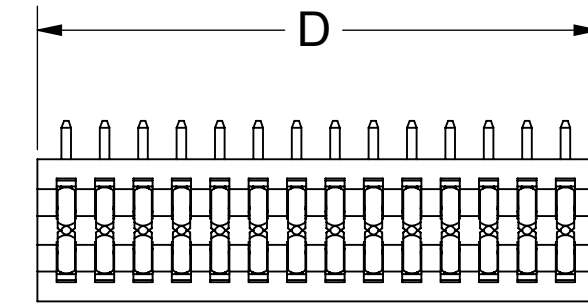
CUSTOMER COPY



UNLESS OTHERWISE SPECIFIED: DIMENSIONS ARE IN INCHES [MM]		DRAWN	DATE	NAME	
			12/1/2011	JH	
TOLERANCES: ANGULAR: ± 1° DECIMALS .XX = ± .02 [.5] .XXX = ± .005 [0.13] .XXXX = ± .0005 [0.13]					THE INFORMATION HEREIN CONTAINS PROPRIETARY INFORMATION OF SULLINS ELECTRONICS AND IS NOT TO BE REPRODUCED, USED OR DISCLOSED TO OTHERS FOR ANY PURPOSE EXCEPT AS SPECIFICALLY AUTHORIZED IN WRITING BY AN OFFICER OF SULLINS ELECTRONICS.
TITLE					EDGE CARD, .100 CC
PART NUMBER					G_C_DCA - S757
SIZE	CAGE CODE	DWG. NO.	REV		
C	54453	C11918	A		
SCALE: 2:1		SHEET 1 OF 2			

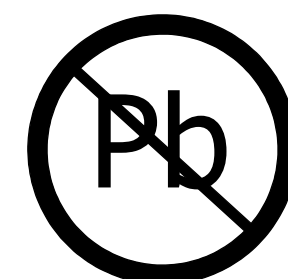
PART NUMBER*	NO. OF POS.	A±.008[0.20]		B±.008[0.20]		C±.015[0.38]		D±.020[0.51]		F±.020[0.51]	
		IN	MM	IN	MM	IN	MM	IN	MM	IN	MM
G_C02DCA_-S757	2	0.100	2.54	0.300	7.62	0.460	11.68	0.250	6.35	0.340	8.64
G_C04DCA_-S757	4	0.300	7.62	0.500	12.70	0.660	16.76	0.450	11.43	0.540	13.72
G_C06DCA_-S757	6	0.500	12.70	0.700	17.78	0.860	21.84	0.650	16.51	0.740	18.80
G_C08DCA_-S757	8	0.700	17.78	0.900	22.86	1.060	26.92	0.850	21.59	0.940	23.88
G_C10DCA_-S757	10	0.900	22.86	1.100	27.94	1.260	32.00	1.050	26.67	1.140	28.96
G_C12DCA_-S757	12	1.100	27.94	1.300	33.02	1.460	37.08	1.250	31.75	1.340	34.04
G_C14DCA_-S757	14	1.300	33.02	1.500	38.10	1.660	42.16	1.450	36.83	1.540	39.12
G_C16DCA_-S757	16	1.500	38.10	1.700	43.18	1.860	47.24	1.650	41.91	1.740	44.20
G_C18DCA_-S757	18	1.700	43.18	1.900	48.26	2.060	52.32	1.850	46.99	1.940	49.28
G_C20DCA_-S757	20	1.900	48.26	2.100	53.34	2.260	57.40	2.050	52.07	2.140	54.36
G_C22DCA_-S757	22	2.100	53.34	2.300	58.42	2.460	62.48	2.250	57.15	2.340	59.44
G_C24DCA_-S757	24	2.300	58.42	2.500	63.50	2.660	67.56	2.450	62.23	2.540	64.52
G_C26DCA_-S757	26	2.500	63.50	2.700	68.58	2.860	72.64	2.650	67.31	2.740	69.60
G_C28DCA_-S757	28	2.700	68.58	2.900	73.66	3.060	77.72	2.850	72.39	2.940	74.68
G_C30DCA_-S757	30	2.900	73.66	3.100	78.74	3.260	82.80	3.050	77.47	3.140	79.76
G_C32DCA_-S757	32	3.100	78.74	3.300	83.82	3.460	87.88	3.250	82.55	3.340	84.84
G_C34DCA_-S757	34	3.300	83.82	3.500	88.90	3.660	92.96	3.450	87.63	3.540	89.92
G_C36DCA_-S757	36	3.500	88.90	3.700	93.98	3.860	98.04	3.650	92.71	3.740	95.00
G_C38DCA_-S757	38	3.700	93.98	3.900	99.06	4.060	103.12	3.850	97.79	3.940	100.08
G_C40DCA_-S757	40	3.900	99.06	4.100	104.14	4.260	108.20	4.050	102.87	4.140	105.16
G_C42DCA_-S757	42	4.100	104.14	4.300	109.22	4.460	113.28	4.250	107.95	4.340	110.24
G_C44DCA_-S757	44	4.300	109.22	4.500	114.30	4.660	118.36	4.450	113.03	4.540	115.32
G_C46DCA_-S757	46	4.500	114.30	4.700	119.38	4.860	123.44	4.650	118.11	4.740	120.40
G_C48DCA_-S757	48	4.700	119.38	4.900	124.46	5.060	128.52	4.850	123.19	4.940	125.48
G_C50DCA_-S757	50	4.900	124.46	5.100	129.54	5.260	133.60	5.050	128.27	5.140	130.56

'B' MOUNTING AVAILABLE IN ALL POSITIONS,
FOR 'N' MOUNTING, CONSULT FACTORY FOR AVAILABLE POSITIONS



G_C__DCAB-S757

CUSTOMER COPY



RoHS COMPLIANT

UNLESS OTHERWISE SPECIFIED: DIMENSIONS ARE IN INCHES [MM]		DRAWN	DATE	NAME						
			12/1/2011	JH						
TOLERANCES: ANGULAR: ± 1° DECIMALS .XX=± .02 [.5] .XXX=± .005 [.13] .XXXX=± .0005 [.013]					<small>THE INFORMATION HEREIN CONTAINS PROPRIETARY INFORMATION OF SULLINS ELECTRONICS AND IS NOT TO BE REPRODUCED, USED OR DISCLOSED TO OTHERS FOR ANY PURPOSE EXCEPT AS SPECIFICALLY AUTHORIZED IN WRITING BY AN OFFICER OF SULLINS ELECTRONICS.</small>			TITLE	EDGE CARD, .100 CC	
								PART NUMBER	G_C__DCA_-S757	
		SIZE	CAGE CODE	DWG. NO.			REV			
		C	54453	C11918			A			
		SCALE: 2:1						SHEET 2 OF 2		