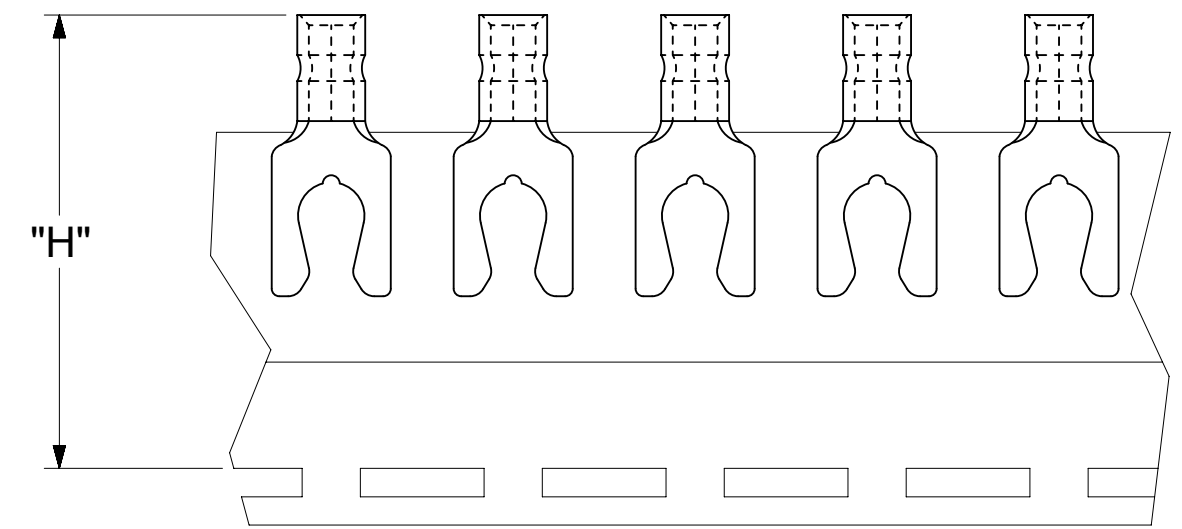
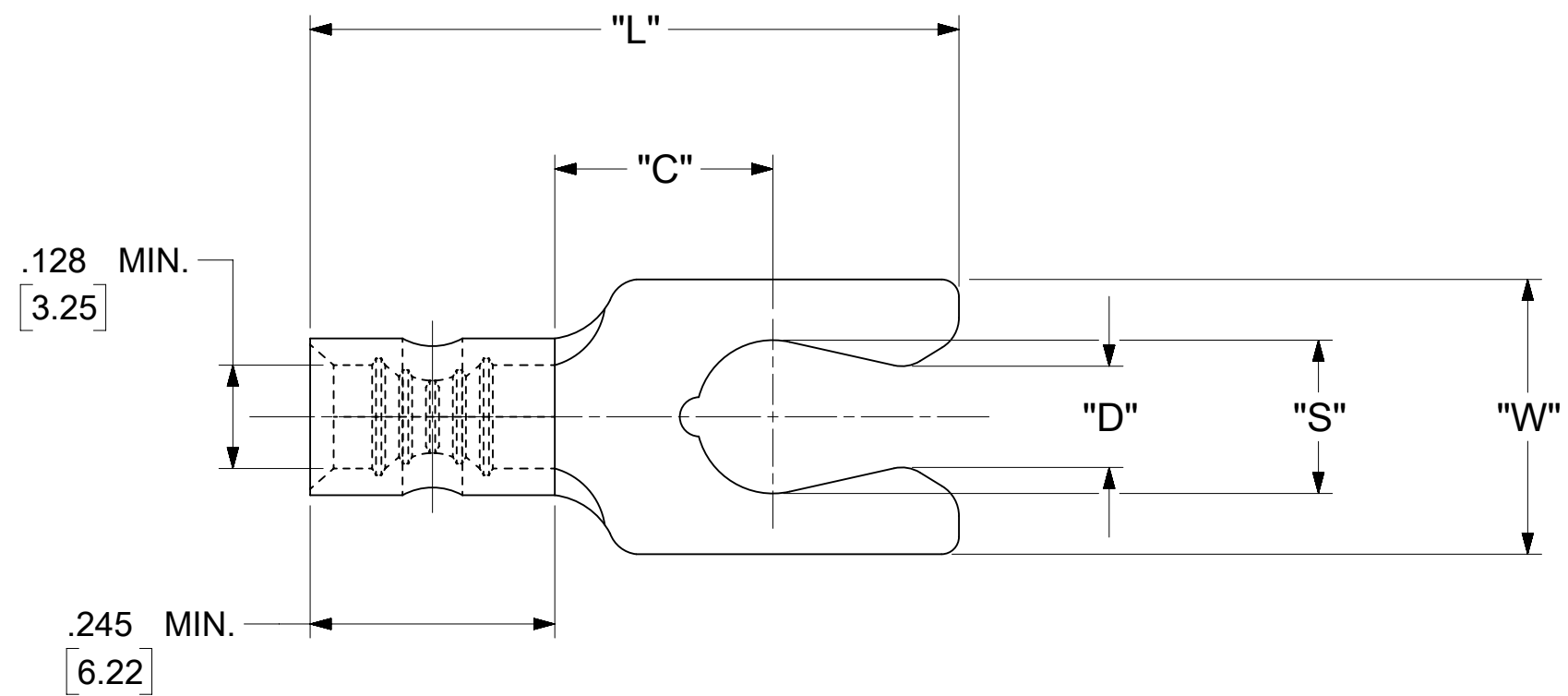


LOOSE PIECE		TAPE MOUNTED		SPECIFICATIONS						
MATERIAL NUMBER	ENGINEERING NUMBER	MATERIAL NUMBER	ENGINEERING NUMBER	STUD SIZE	"S" ±.005 [0.13]	"W" ±.010 [0.25]	"C" MIN.	"L" MAX.	"D" ±.005 [0.13]	"H"
190980073	C-1718-08	190980091	C-1718-08T	8	.173 [4.39]	.310 [7.87]	.261 [6.63]	.725 [18.415]	.139 [3.53]	1.234 [31.34]
190980074	C-1719-10	190980075	C-1719-10T	10	.198 [5.03]	.330 [8.38]	.261 [6.63]	.773 [19.63]	.156 [3.96]	1.234 [31.34]



PARTS ON TAPE

NOTES:

- MATERIAL: TERMINAL: COPPER (STOCK THICKNESS .040±.001 [1.02])
PLATING: ELECTRO-TIN (.0003 MIN.)
- WIRE SIZE: 12 -10 AWG
4.0 -6.0 MM²
- "UL" LISTING #E32244
"CSA" LISTING #18689
- ALL DIMENSIONS IN INCHES/[MM].
- PARTS ARE ROHS COMPLIANT.
- DIMS. SHOWN ARE FOR REFERENCE ONLY.

SYMBOLS	THIS DRAWING CONTAINS INFORMATION THAT IS PROPRIETARY TO MOLEX ELECTRONIC TECHNOLOGIES, LLC AND SHOULD NOT BE USED WITHOUT WRITTEN PERMISSION	
	DIMENSION UNITS	SCALE
∇ = 0	INCH/MM	NTS
∇ = 0	GENERAL TOLERANCES (UNLESS SPECIFIED)	
∇ = 0		
∇ = 0	4 PLACES	± --- ± ---
∇ = 0	3 PLACES	± --- ± .005
∇ = 0	2 PLACES	± 0.13 ± .01
∇ = 0	1 PLACE	± 0.25 ± ---
∇ = 0	0 PLACES	± --- ± ---
∇ = 0	ANGULAR TOL	± 0.5 °
∇ = 0	DRAFT WHERE APPLICABLE MUST REMAIN WITHIN DIMENSIONS	
∇ = 0	THIRD ANGLE PROJECTION	DRAWING
∇ = 0	CURRENT REV DESC:	
	EC NO: 625846	2019/08/28
	DRWN: ABENJAMINLW	2019/10/17
	CHK'D: GROJAS01	2019/10/18
	APPR: JMACNEIL	2019/10/18
	INITIAL REVISION:	
	DRWN: GZ	1985/04/05
	APPR:	
	SERIES	19098
	C-SIZE	
	DOCUMENT NUMBER	
	CCD10503	PSD 001 A
	DOC TYPE DOC PART REVISION	
	MATERIAL NUMBER	
	SEE TABLE	GENERAL MARKET
	CUSTOMER	
	SHEET NUMBER	
	1 OF 1	