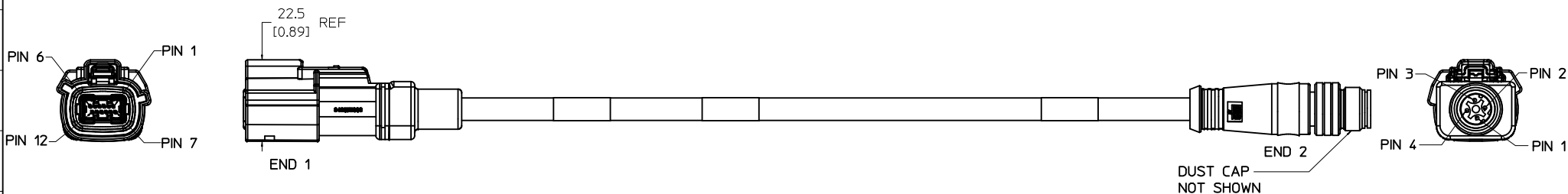
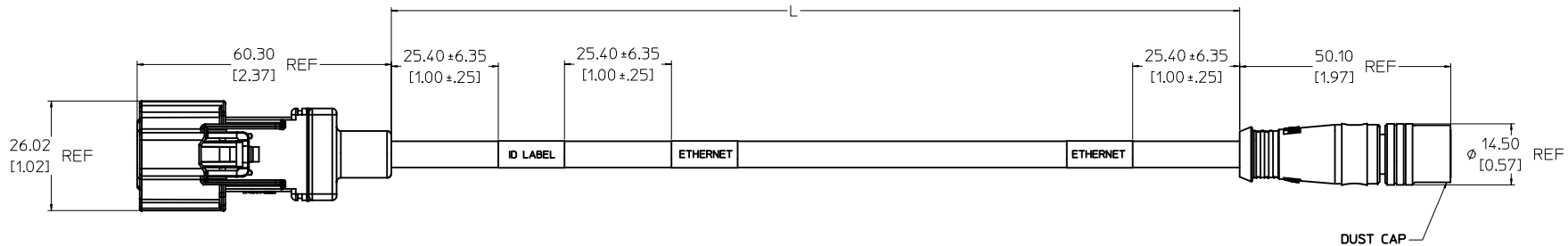


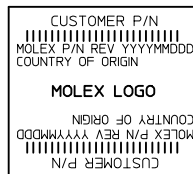
MOLEX PN	CUST PN	DESCRIPTION	END 1		END 2		L (m)	L (IN)	TOL mm [in]
			POL	COLOR	POL	COLOR			
111149-1501		HSALII 12CKT LVDS ASSM STR PLUG-STR M12	A	BLACK	N/A	N/A	1	39	≤2m: +25[1.0]/-0
111149-1503		HSALII 12CKT LVDS ASSM STR PLUG-STR M12	A	BLACK	N/A	N/A	3	118	
111149-1505		HSALII 12CKT LVDS ASSM STR PLUG-STR M12	A	BLACK	N/A	N/A	5	197	
111149-2565		HSALII 12CKT LVDS ASSM STR PLUG-STR M12	B	GRAY	N/A	N/A	0.65	26	>2m: +50[2.0]/-0
111149-2501		HSALII 12CKT LVDS ASSM STR PLUG-STR M12	B	GRAY	N/A	N/A	1	39	
111149-2533	PFP11276	HSALII 12CKT LVDS ASSM STR PLUG-STR M12	B	GRAY	N/A	N/A	3.35	132	
111149-2512		HSALII 12CKT LVDS ASSM STR PLUG-STR M12	B	GRAY	N/A	N/A	1.2	47	
111149-2524	RE340137	HSALII 12CKT LVDS ASSM STR PLUG-STR M12	B	GRAY	N/A	N/A	2.46	97	
111149-2505		HSALII 12CKT LVDS ASSM STR PLUG-STR M12	B	GRAY	N/A	N/A	5	197	



COMPONENT	MATERIAL	FINISH
CABLE	PVC JACKET - BLACK	NA
STRAIN RELIEF	PVC - BLACK	NA
12CKT TERMINALS	COPPER ALLOY	AU + SN PLATED
M12 CONTACTS	COPPER ALLOY	AU PLATED
12CKT CONNECTOR HOUSING	SPS/PAA 20% GLASS FILLED	NA
M12 HOUSING	POLYURETHANE	BLACK
12CKT CONNECTOR SHIELDING	COPPER ALLOY	NI PLATED

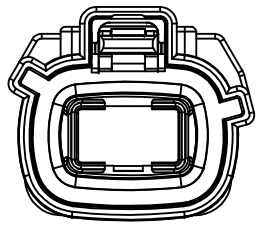
NOTES:

1. MATERIAL: SEE CHART
2. FINISH: SEE CHART
3. PRODUCT SPECIFICATION: TBD
4. PACKAGING SPECIFICATION: PK-111149-001
5. NO RoHS EXEMPTIONS.
6. IDENTIFICATION LABEL MUST DISPLAY CUSTOMER PART NUMBER, SUPPLIER PART NUMBER, DATE CODE (YYYYMMDD), REVISION, AND LOGO AND COUNTRY OF ORIGIN
7. CONTINUITY AND HIPOT TESTS TO BE PERFORMED ON ALL HARNESSSES.
8. ENVIRONMENTAL IN ACCORDANCE WITH R345247, IP67 (-40°C TO 105°C).

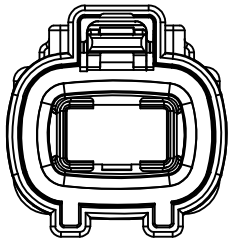


LAST LETTER OF DATE CODE:
D= DAY SHIFT, N= NIGHT SHIFT
BAR CODE = MOLEX MATERIAL NUMBER

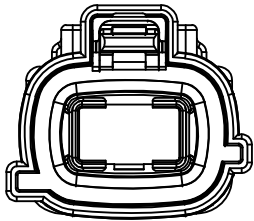
QUALITY SYMBOLS	GENERAL TOLERANCES (UNLESS SPECIFIED)	DIMENSION STYLE		SCALE	DESIGN UNITS	THIRD ANGLE PROJECTION
		MM/IN	DATE			
▽=0	mm INCH	DRAWN BY	DATE	2.5:1	METRIC	
▽=0	4 PLACES +--- ±.0002	CCOX	2013/03/15			
▽=0	3 PLACES +--- ±.005	CHECKED BY	DATE	HSALII 12CKT LVDS ASSM STRAIGHT SEALED PLUG TO STRAIGHT M12		
▽=0	2 PLACES ±0.13 ±.01	APPROVED BY	DATE	MOLEX INCORPORATED		
▽=0	1 PLACE ±0.25 ±---	MATERIAL NO.	DOCUMENT NO.	SD-111149-006		
	ANGULAR ±1/2°	SEE CHART		SHEET NO. 1 OF 2		
DRAFT WHERE APPLICABLE MUST REMAIN WITHIN DIMENSIONS		THIS DRAWING CONTAINS INFORMATION THAT IS PROPRIETARY TO MOLEX INCORPORATED AND SHOULD NOT BE USED WITHOUT WRITTEN PERMISSION				



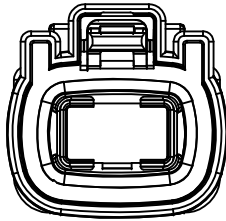
POL A
COLOR: BLACK



POL B
COLOR: GRAY

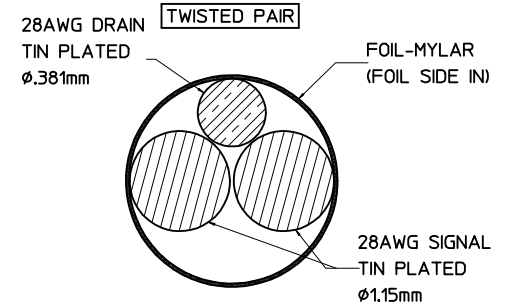
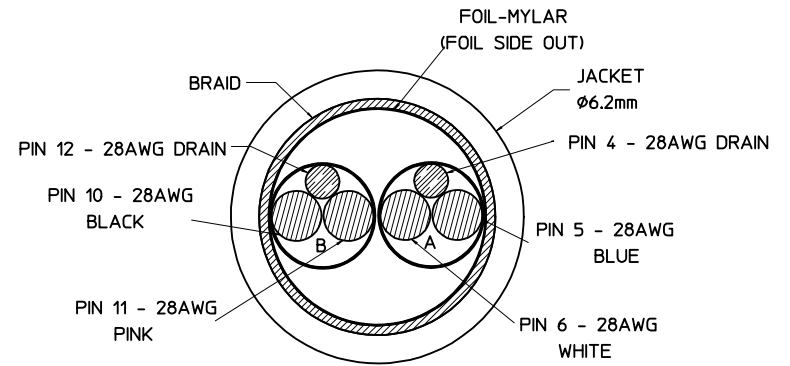


POL C
COLOR: BROWN



POL D
COLOR: GREEN

END 1	COLOR	DESCRIPTION	END 2	DESCRIPTION
PIN 1	NA	NC		
PIN 2	NA	NC		
PIN 3	NA	NC		
PIN 4	DRAIN	PAIR A SHIELD	SHIELD	SHIELD
PIN 5	BLUE	PAIR A+	PIN 1	BI-DIRECTIONAL PAIR A+
PIN 6	WHITE	PAIR A-	PIN 3	BI-DIRECTIONAL PAIR A-
PIN 7	NA	NC		
PIN 8	NA	NC		
PIN 9	NA	NC		
PIN 10	BLACK	PAIR B+	PIN 2	BI-DIRECTIONAL PAIR B+
PIN 11	PINK	PAIR B-	PIN 4	BI-DIRECTIONAL PAIR B-
PIN 12	DRAIN	PAIR B SHIELD	SHIELD	SHIELD
BRD + SHD	NA	BRAID TO SHIELD	BRD + SHD	BRAID TO SHIELD



CHG 2503 to 2533 EC NO. 2013/05/30 DRAWING GRAY DATE: 2013/03/15 APPR.	QUALITY SYMBOLS ▽=0 ▽=0 ▽=0	GENERAL TOLERANCES (UNLESS SPECIFIED) <table border="1"> <thead> <tr> <th></th> <th>mm</th> <th>INCH</th> </tr> </thead> <tbody> <tr> <td>4 PLACES</td> <td>±.002</td> <td>±.0002</td> </tr> <tr> <td>3 PLACES</td> <td>±.005</td> <td>±.001</td> </tr> <tr> <td>2 PLACES</td> <td>±.013</td> <td>±.01</td> </tr> <tr> <td>1 PLACE</td> <td>±.025</td> <td>±.01</td> </tr> </tbody> </table> ANGULAR ±1/2°		mm	INCH	4 PLACES	±.002	±.0002	3 PLACES	±.005	±.001	2 PLACES	±.013	±.01	1 PLACE	±.025	±.01	DIMENSION STYLE MM/IN DRAWN BY: CCOX DATE: 2013/03/15 CHECKED BY: DATE: APPROVED BY: DATE:	SCALE: 7:1 DESIGN UNITS: METRIC THIRD ANGLE PROJECTION	TITLE: HSALI 12CKT LVDS ASSM STRAIGHT SEALED PLUG TO STRAIGHT M12
		mm	INCH																	
	4 PLACES	±.002	±.0002																	
	3 PLACES	±.005	±.001																	
2 PLACES	±.013	±.01																		
1 PLACE	±.025	±.01																		
MATERIAL NO. SEE CHART	DOCUMENT NO. SD-111149-006	SHEET NO. 2 OF 2	THIS DRAWING CONTAINS INFORMATION THAT IS PROPRIETARY TO MOLEX INCORPORATED AND SHOULD NOT BE USED WITHOUT WRITTEN PERMISSION																	