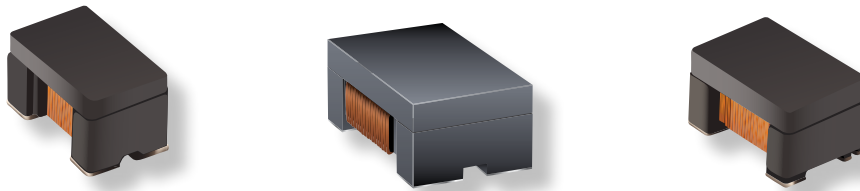




PRODUCT CHANGE NOTIFICATION

MAGNETICS



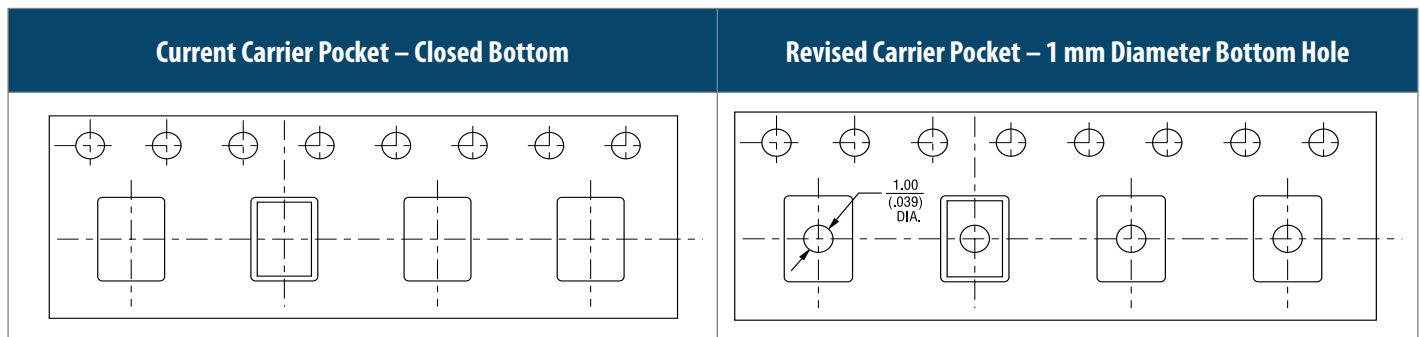
Select Model SRF and SM Series Common Mode Chip Inductors

Carrier Tape Design Change

Riverside, California – February 24, 2020 – Effective immediately, Bourns is changing the carrier tape design of select SRF and SM Series Common Mode Chip Inductors to include a 1 mm diameter hole at the bottom of the carrier pocket.

The carrier pocket currently has a closed bottom. In some cases, when the carrier tape is peeled away during assembly, the process itself can generate a level of electrostatic discharge high enough to attract small components remaining in the pocket which can interfere with the component picking process. Research shows that the open hole at the bottom of the carrier pocket can dramatically reduce the static voltage to a level that will not interfere with the assembly process. A list of affected part numbers is included on the following page.

The change in carrier tape design has no effect on the component. The form, fit, function, reliability and quality of the inductor remain unchanged.



Implementation dates are as follows:

First date code using the above changes: **2007**

If you have any questions or need additional information, please feel free to contact [Customer Service/Inside Sales](#).

Users should verify that the described changes will not impact the performance of the product in their specific applications.

IC1921A

Affected Part Numbers				
SRF1209A Series	SRF2012AA Series	SRF3216A Series	SRF3225TAB Series	SM453229 Series
SRF1209A-500Y	SRF2012A-670YA	SRF3216A-900Y	SRF3225TAB-101Y	SM453229-381N7Y
SRF1209A-600Y	SRF2012A-900YA	SRF3216A-121Y	SRF3225TAB-201Y	SM453229A-381N7Y
SRF1209A-900Y	SRF2012A-121YA	SRF3216A-161Y	SRF3225TABR Series	SM453229-381N7T
SRF2012A Series	SRF2012A-161YA	SRF3216A-221Y	SRF3225TABR-101Y	SM453229-231N7Y
SRF2012-300YA	SRF2012A-181YA	SRF3216A-261Y	SRF3225TABR-201Y	SM453229-231N7T
SRF2012-670YA	SRF2012A-201YA	SRF3216A-361Y	SRF3225TABA Series	SM453230 Series
SRF2012-900YA	SRF2012A-221YA	SRF3216A-601Y	SRF3225TABA-101Y	SM453230-181N7Y
SRF2012-121YA	SRF2012A-261YA	SRF3216A-102Y	SRF3225TABA-201Y	SM453230-121N7T
SRF2012-161YA	SRF2012A-301YA	SRF3216A-222Y	SRF3225TAP Series	SM453230-181N7T
SRF2012-181YA	SRF2012A-361YA	SRF3225TA Series	SRF3225TAP-510Y	SRF3532 Series
SRF2012-201YA	SRF3216 Series	SRF3225TA-110Y	SRF3225TAP-102Y	SRF3532-750T03
SRF2012-221YA	SRF3216-900Y	SRF3225TA-220Y	SRF4532 Series	SRF3416 Series
SRF2012-261YA	SRF3216-161Y	SRF3225TA-510Y	SRF4532-1R0Y	SRF3416-600T02
SRF2012-301YA	SRF3216-221Y	SRF3225TA-101Y	SRF4532-110Y	SRF4632A Series
SRF2012-361YA	SRF3216-261Y	SRF3225TAC Series	SRF4532-220Y	SRF4632A-101T
SRF2012-371YA	SRF3216-601Y	SRF3225TAC-110Y	SRF4532-510Y	SRF4632A-161T
SRF2012-501YA	SRF3216-102Y	SRF3225TAC-220Y	SRF4532-101Y	
SRF2012-671YA	SRF3216-222Y	SRF3225TAC-510Y	SM3532 Series	
SRF2012-901YA		SRF3225TAC-101Y	SM3532-181N7Y	