

D-SUB power contact - VS-ST-LK-3,6/22,4/2,6 - 1688243


Please be informed that the data shown in this PDF Document is generated from our Online Catalog. Please find the complete data in the user's documentation. Our General Terms of Use for Downloads are valid (<http://phoenixcontact.com/download>)



Power contacts, for D-SUB combination inserts, pin, solder cup, straight, rated current 20 A, gold-plated

RoHS

Key Commercial Data

Packing unit	100 pc
GTIN	 4 017918 179649
GTIN	4017918179649

Technical data

Mechanical characteristics

Insertion/withdrawal cycles	≥ 500
Connection method	Solder cup
Type of contact	Pin
Conductor cross section	2 mm ² ... 3.5 mm ²
Connection cross section AWG	14 ... 12
Insertion force per signal contact	≤ 7.00 N
Extraction force per signal contact	approx. 5 N
Insulation resistance	≥ 5 GΩ
Contact type	turned
Note	Power contacts must be ordered separately since they are not included in the scope of supply of the contact carriers.

Ambient conditions

Ambient temperature (operation)	-55 °C ... 130 °C
---------------------------------	-------------------

Material data

Contact material	Copper alloy
Contact surface material	Au/Sn

Electrical characteristics

D-SUB power contact - VS-ST-LK-3,6/22,4/2,6 - 1688243

Technical data

Electrical characteristics

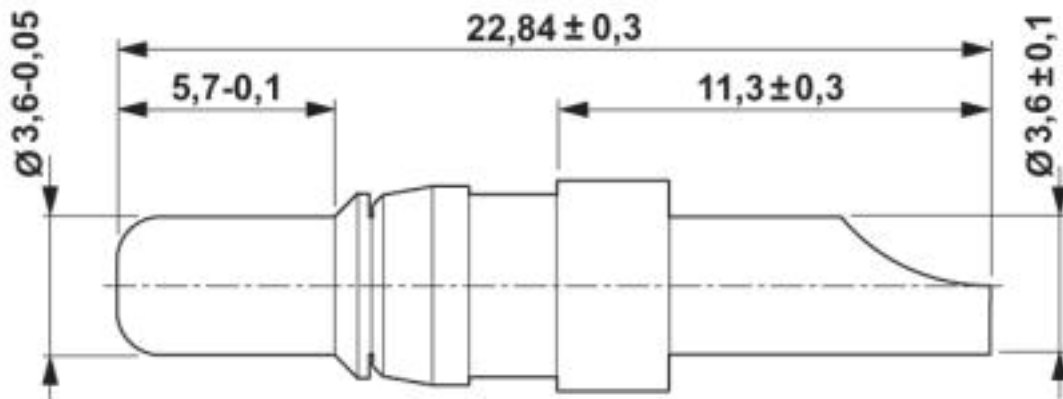
Rated current	20 A (at 20 °C)
Test voltage	1000 V

Environmental Product Compliance

	Lead 7439-92-1
China RoHS	Environmentally Friendly Use Period = 50
	For details about hazardous substances go to tab "Downloads", Category "Manufacturer's declaration"

Drawings

Dimensional drawing



D-SUB power contact pin

Approvals

Approvals

Approvals

EAC

Ex Approvals

Approval details

EAC		B.01742
-----	--	---------

Phoenix Contact 2019 © - all rights reserved
<http://www.phoenixcontact.com>

PHOENIX CONTACT GmbH & Co. KG
Flachmarktstr. 8
32825 Blomberg
Germany
Tel. +49 5235 300
Fax +49 5235 3 41200
<http://www.phoenixcontact.com>