

# Customer Information Sheet

DRAWING No.: M20-107XX00

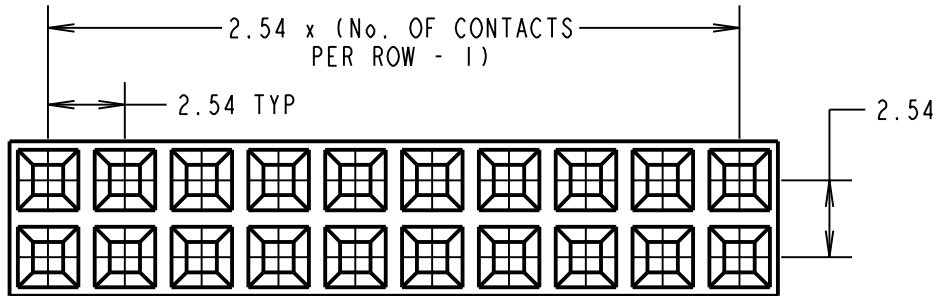
IF IN DOUBT - ASK



NOT TO SCALE

THIRD ANGLE PROJECTION

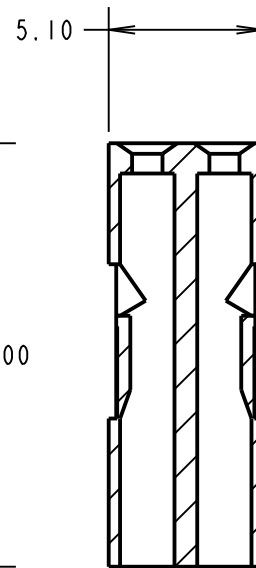
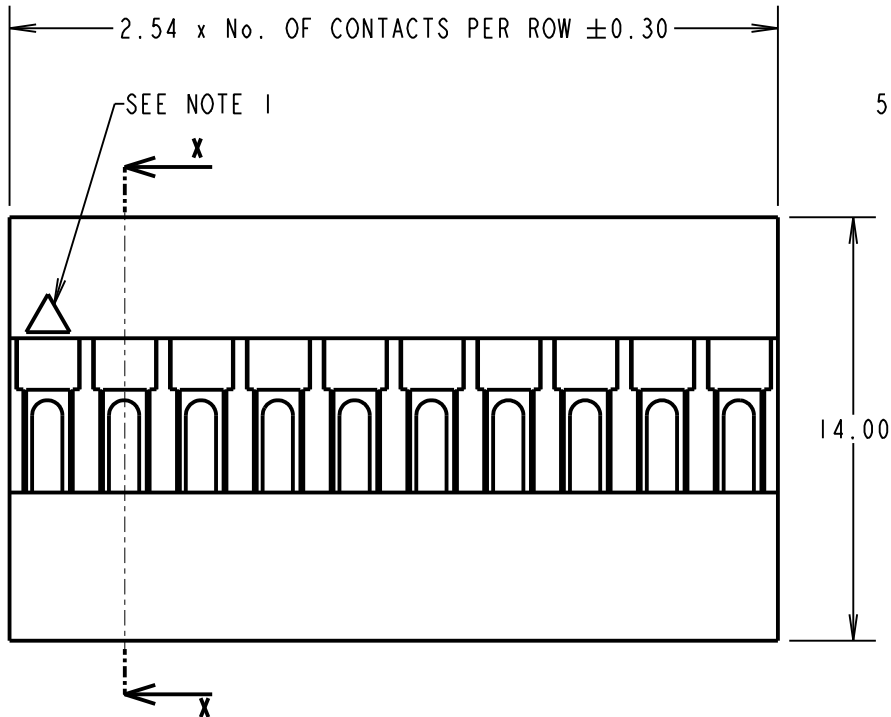
ALL DIMENSIONS IN mm



ORDER CODE:

**M20-107XX00**

No. OF CONTACTS PER ROW:  
02 TO 12



SECTION X-X

**SPECIFICATIONS:**

**ELECTRICAL:**

CURRENT RATING = 3A AC/DC

VOLTAGE RATING = 250V AC MAX

CONTACT RESISTANCE = 20mΩ MIN

INSULATION RESISTANCE = 1,000MΩ MIN

DIELECTRIC STRENGTH = 1,000 AC FOR 1 MINUTE

**ENVIRONMENTAL:**

TEMPERATURE RANGE = -25°C TO +85°C

**NOTES:**

- CONTACT No. 1 MARKER SYMBOL.
- FOR USE WITH CRIMP CONTACTS:  
M20-11600XX (REELED CONTACTS),  
M20-11800XX (LOOSE CONTACTS).
- THE ABOVE SPECIFICATIONS APPLY  
WHEN THIS MOULDING IS USED  
WITH THE SPECIFIC CONTACTS.
- FOR COMPLETE ELECTRICAL AND  
MECHANICAL SPECIFICATIONS, SEE  
COMPONENT SPECIFICATION C001XX  
(LATSEST ISSUE).
- MATING LENGTH = 6.30mm MAX  
5.50mm MIN

MGP	7	27.02.19	21370
NAME	ISS.	DATE	C/NOTE
APPROVED: MGP			
CHECKED: SB			
DRAWN: S.BENNETT			
CUSTOMER REF.:			
ASSEMBLY DRG:			

**HARWIN**

www.harwin.com  
technical@harwin.com

THIS DRAWING AND ANY  
INFORMATION OR DESCRIPTIVE  
MATTER SET OUT HEREON ARE  
CONFIDENTIAL AND COPYRIGHT  
PROPERTY OF THE HARWIN  
GROUP AND MUST NOT BE  
DISCLOSED, LOANED, COPIED  
OR USED FOR MANUFACTURING,  
TENDERING OR FOR ANY  
OTHER PURPOSE WITHOUT  
THEIR WRITTEN PERMISSION.

**TOLERANCES**  
X. = ±1mm  
X.X = ±0.50mm  
X.XX = ±0.20mm  
X.XXX = ±0.01mm  
**ANGLES = ±5°**  
**UNLESS STATED**

**MATERIAL:**  
PPE+PS  
UL94V-1 BLACK  
**FINISH:**  
**S/AREA:** mm<sup>2</sup>

**TITLE:**  
2.54mm PITCH DIL  
CRIMP MOULDING

**DRAWING NUMBER:**  
**M20-107XX00**

SHT  
2 OF 2