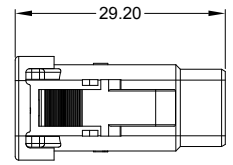
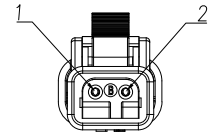
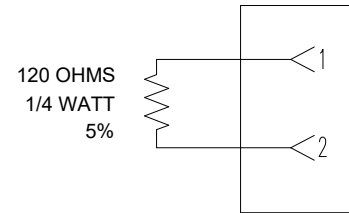


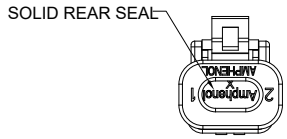
REVISIONS					
REV	ECO	DESCRIPTION	DATE	BY	APPR
A1	-	RELEASE NEW DWG FORMAT	18APR19	BROOK	TOMMY
A2	-	REVISED NOTE #5	28JUN22	JHEAD	DH



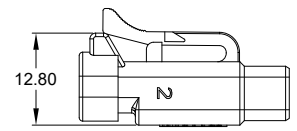
WIRING DIAGRAM



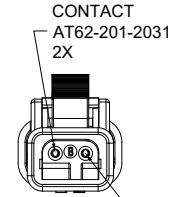
FACE VIEW



SOLID REAR SEAL



12.80

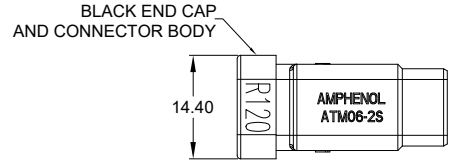


CONTACT
AT62-201-2031
2X

LOCKING WEDGE
AWM-2SB

NOTES: UNLESS OTHERWISE SPECIFIED

- MATERIAL:
HOUSING: THERMOPLASTIC;BLACK
SEAL: SILICONE RUBBER
- MODIFICATIONS: RESISTOR
- CONNECTOR SPECIFICATIONS:
3.1 CURRENT RATING: 7.5 AMPS
3.2 OPERATING TEMPERATURE: -55°C TO +125°C
3.3 DIELECTRIC WITHSTANDING VOLTAGE: LESS THAN 2 MILLIAMPS CURRENT LEAKAGE @ 1500 VOLTS AC.
3.4 INSULATION RESISTANCE: 1000 MEGOHMS MIN @ 25°C.
3.5 MOISTURE RESISTANCE: IP67 (MATED CONDITION)
3.6 MATING CYCLE DURABILITY: 100 CYCLES
3.7 RoHS COMPLIANT
- RESISTOR SPECIFICATIONS:120 OHMS.
- MATING PART: ATM04-2P* RECEPTACLE WITH AWM-2PB WEDGE INSTALLED.
(* = MODIFICATIONS AND COLORS)
- ALL DIMENSIONS ARE FOR REFERENCE USE ONLY.



BLACK END CAP
AND CONNECTOR BODY

14.40

ATM06-2S-RB120BK		REF: 07M062SEP0	
PART NUMBER		DESCRIPTION	
QUANTITY	MATERIALS LIST		
UNLESS OTHERWISE SPECIFIED: 1) All dimensions are in metric (mm). 2) Tolerances are as follows: 1 PL DEC ±0.30 Fractions ±1/64 2 PL DEC ±0.15 Angles ±1° 3 PL DEC ±0.083) Note reference =		SIGNATURES	DATE
DRAWN: BROOK DNG		18APR19	
CHECKED: ORION LI		18APR19	
APPROVAL: TOMMY		18APR19	
MATERIAL SPECIFICATIONS:		CUSTOMER:	
PROCESS SPECIFICATIONS:		THIS DRAWING IS SUPPLIED FOR INFORMATION ONLY. DESIGN FEATURES, SPECIFICATIONS AND PERFORMANCE DATA SHOWN HEREON ARE THE PROPERTY OF THE AMPHENOL CORPORATION. NO RIGHTS OF REPRODUCTION ARE IMPLIED. ALL DIMENSIONS ARE SUBJECT TO NORMAL MANUFACTURING VARIATIONS.	
NEXT ASSY:	SIZE	TYPE	DWG NO.
	B	C-	ATM06-2S-RB120BK
	SCALE: NONE	REVISION	A2
		SHEET	1 OF 1

TITLE: PLUG, B KEY, 2 CONTACTS, RESISTOR, ATM BLACK
DWG NO: ATM06-2S-RB120BK
REV: A2
SH: 1
OF: 1