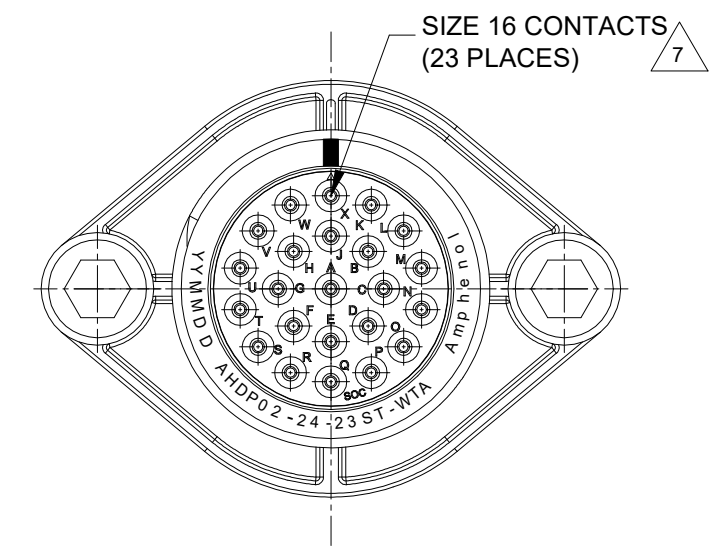
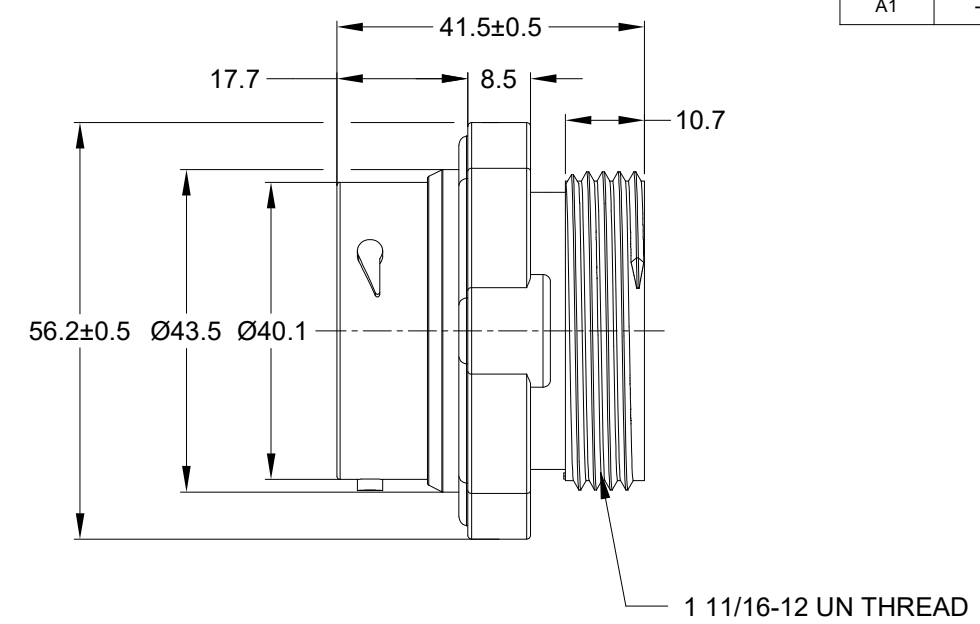
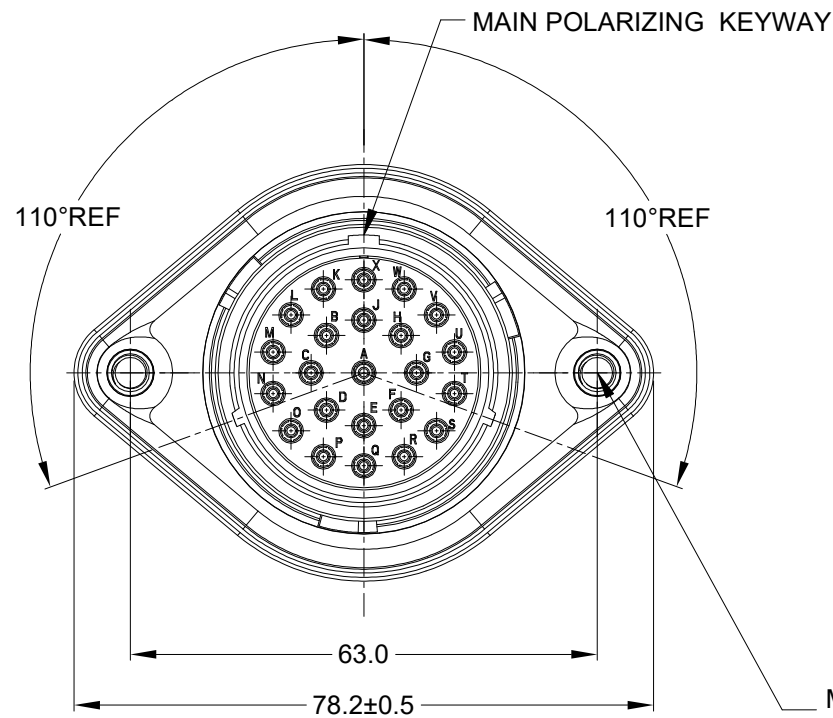


| REVISIONS | | | | | |
|-----------|-----|---------------------|-----------|------|-------|
| REV | ECO | DESCRIPTION | DATE | BY | APPR |
| A1 | -- | RELEASE NEW DRAWING | 16/NOV/22 | MILO | TOMMY |



M5X0.8-6H 8mm(2X) DEEP
THREADED INSERT

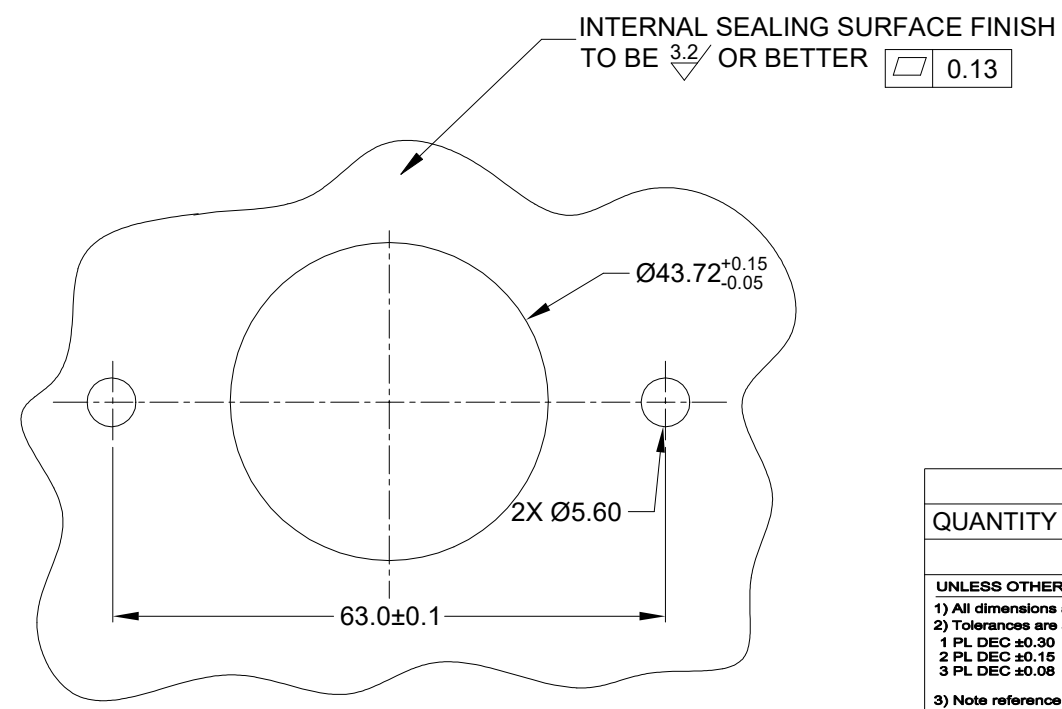
RECOMMENDED TORQUE
VALUES: 1.9-2.2 N.m

NOTES: UNLESS OTHERWISE SPECIFIED

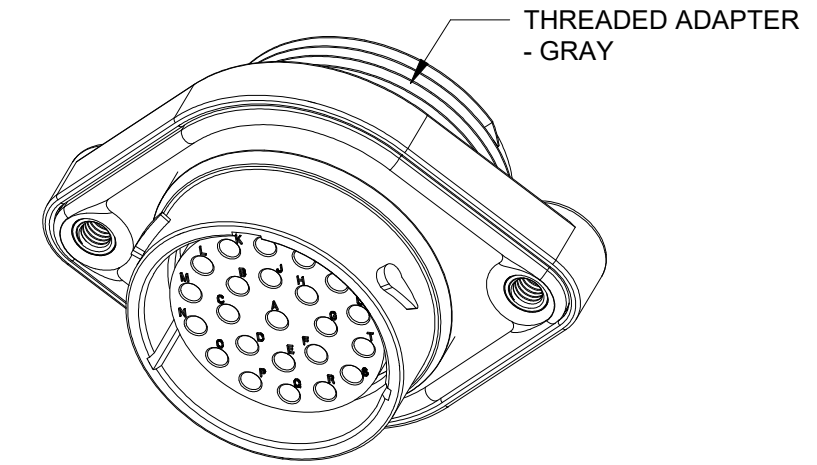
- MATERIAL:
HOUSING: THERMOPLASTIC; BLACK
SEAL: SILICONE RUBBER
THREADED INSERT: STAINLESS STEEL
- MODIFICATIONS: WIDE THREAD ADAPTER (WTA);
THIN WALL DIA. WIRE SEAL
SEALED PANEL MOUNT
- SPECIFICATIONS:
3.1 OPERATING TEMPERATURE: -55°C TO +125°C.
3.2 DIELECTRIC WITHSTANDING VOLTAGE: LESS THAN 2
MILLIAMPS CURRENT LEAKAGE @ 1500 VOLTS AC.
3.3 INSULATION RESISTANCE: 1000 MEGOHM MIN @ 25°C.
3.4 MOISTURE RESISTANCE:
IP68(IM OF WATER FOR A PERIOD OF 24 HOURS, MATED
CONDITION);
IP69K(MATED CONDITION)
3.5 MATING CYCLE DURABILITY: 100 CYCLES
3.6 RoHS COMPLIANT
- MATING PART: AHDP06-24-23P* (* = SEAL TYPE)
- ALL DIMENSIONS ARE FOR REFERENCE USE ONLY.
- RECEPTACLE IS SUPPLIED WITH DUST CAP (NOT SHOWN)

7 CONTACT SIZE AND WIRE RANGE:

| CONTACT SIZE | MIN.INSUL O.D | MAX.INSUL O.D | WIRE RANGE mm ² |
|--------------|-----------------|-----------------|------------------------------------|
| 16 | 2.23mm (.088in) | 2.69mm (.106in) | 14-20AWG (2.0-0.5mm ²) |



RECOMMENDED PANEL MOUNTING HOLE
RECOMMENDED PANEL THICKNESS: 1.6 TO 4.7MM



| QUANTITY | AHDP02-24-23ST-WTA | DESCRIPTION | ITEM |
|----------|--------------------|-------------|------|
| | | | |

| MATERIALS LIST | | |
|----------------------|-----------|--|
| SIGNATURES | DATE | |
| DRAWN: MILO.DONG | 16/NOV/22 | |
| CHECKED: SULLENZHANG | 17/NOV/22 | |
| ENGINEER: | | |
| APPROVAL: TOMMY.XIE | 18/NOV/22 | |
| CUSTOMER: | | |

| UNLESS OTHERWISE SPECIFIED: 1) All dimensions are in metric(mm). 2) Tolerances are as follows: 1 PL DEC ±0.30 2 PL DEC ±0.15 3 PL DEC ±0.08 3) Note reference = | | <p>Amphenol</p> <p>Sine Systems - www.amphenol-sine.com 44724 Morley Drive Clinton Township, MI 48036</p> <p>23POS,RECEPTACLE,SOCKET,SZ24, THIN WIRE SEAL,WTA,PANELMATE AHDP</p> | | | | | | | | |
|---|------|---|-----------------------|------|---------|----------|---|----|--------------------|----|
| <p>WEIGHT: 59.5g</p> | | | | | | | | | | |
| <p>THIS DRAWING IS SUPPLIED FOR INFORMATION ONLY. DESIGN FEATURES, SPECIFICATIONS AND PERFORMANCE DATA SHOWN HEREON ARE THE PROPERTY OF THE AMPHENOL CORPORATION. NO RIGHTS OF REPRODUCTION ARE IMPLIED. ALL DIMENSIONS ARE SUBJECT TO NORMAL MANUFACTURING VARIATIONS.</p> | | <table border="1"> <tr> <th>SIZE</th> <th>TYPE</th> <th>DWG NO:</th> <th>REVISION</th> </tr> <tr> <td>B</td> <td>C-</td> <td>AHDP02-24-23ST-WTA</td> <td>A1</td> </tr> </table> | SIZE | TYPE | DWG NO: | REVISION | B | C- | AHDP02-24-23ST-WTA | A1 |
| SIZE | TYPE | DWG NO: | REVISION | | | | | | | |
| B | C- | AHDP02-24-23ST-WTA | A1 | | | | | | | |
| NEXT ASSY: | | SCALE: NONE | DURAMATE SHEET 1 OF 1 | | | | | | | |

TITLE: 23POS.RECEPTACLE SOCKET,SZ24,THIN WIRE SEAL,WTA,PANELMATE AHDP
DWG NO: AHDP02-24-23ST-WTA
REV: A1
SH: 1
OF: 1