

# 75 Ω SMB TO 4 GHz

## SMB Cable Assemblies RF179



SERIES	END 1 CONNECTOR	END 2 CONNECTOR	OVERALL LENGTH
<b>RF179</b> = RG 179 Cable	<b>-77SP1</b> = 75 Ω SMB Straight Plug <b>-77RP1</b> = 75 Ω SMB Right-angle Plug		<b>-“XXXX”</b> = Overall Length in millimeters -0100 (100 mm) 3.94" minimum

### ALSO AVAILABLE

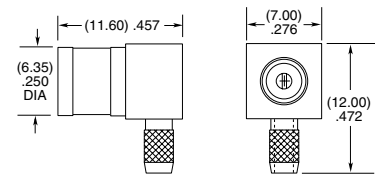
75 Ω: DIN 1.0/2.3, BNC, MCX, MMCX = RF179

## SMB Cable Connectors SMB7H-CA

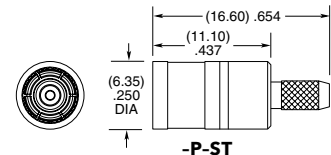


CONNECTORS FOR INDUSTRY STANDARD CABLES	
SMB7H -P-C-H-ST-CA3	RG 179 Cable
SMB7H -P-C-HF-RA-CA3	RG 179 Cable

P-C = Cable Plug  
H or HF = Plating (30 μ" Gold center contact, 3 μ" Gold outer contact)  
ST = Straight  
RA = Right-angle



-P-RA



-P-ST

Supplied with pins and ferrules.  
See website for dimensions

## SMB Board Connectors SMB7H-TH, SMB7H-EM

Cable Mates:  
RF179, GRF7H-C



SMB7H	GENDER	TYPE	PLATING	ORIENTATION	TERMINATION
-------	--------	------	---------	-------------	-------------

**-J**  
= Jack  
**-P**  
= PCB Mount

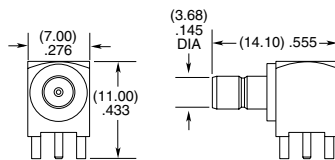
**-H**  
= 30 μ" (0.76 μm) Gold center contact,  
3 μ" (0.08 μm) Gold outer contact

**-ST**  
= Straight  
**-RA**  
= Right-angle

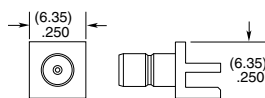
**-TH1**  
= Through-hole ((0.90 mm) .035" DIA Signal Pin)

**-TH2**  
= Through-hole ((0.51 mm) .020" DIA Signal Pin) (-ST only)

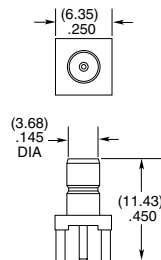
**-EM1**  
= Edge Mount (-ST only)



-RA-TH1



-ST-EM1



-ST-TH1 & -ST-TH2

**Note:**  
Additional plating options available on Cable Assemblies, Cable Connectors and Board Connectors. Contact RFGGroup@samtec.com