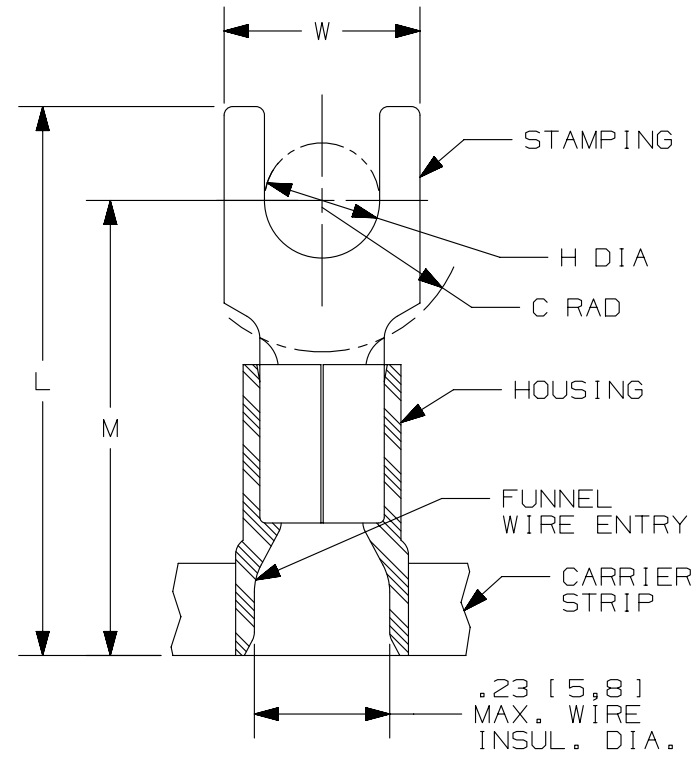


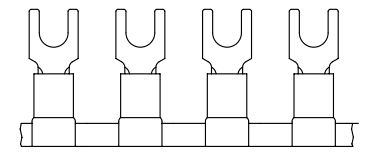
THIS COPY IS PROVIDED ON A RESTRICTED BASIS AND IS NOT TO BE USED IN ANY WAY DETRIMENTAL TO THE INTERESTS OF PANDUIT CORP.

PANDUIT PART #	STUD SIZE		DIMENSIONS in. [mm]				
	ENGLISH	METRIC	L ± .03 [0,76]	W ± .01 [0,25]	C ± .02 [0,51]	M ± .03 [0,76]	H ± .01 [0,25]
PV10-6FB	#6	M3, 5	.99 [25,2]	.30 [7,6]	.22 [5,6]	.78 [19,8]	.15 [3,8]
PV10-8FB	#8	M4	1.00 [25,4]	.30 [7,6]	.22 [5,6]	.78 [19,8]	.17 [4,3]
PV10-10FB	#10	--	1.04 [26,4]	.34 [8,6]	.22 [5,6]	.78 [19,8]	.20 [5,0]
PMV6-5FB	--	M5	1.02 [25,9]	.38 [9,7]	.24 [6,2]	.79 [20,1]	.21 [5,3]
PV10-14FB	1/4"	M6	1.13 [28,7]	.49 [12,5]	.32 [8,1]	.88 [22,4]	.27 [6,9]



NOTES:

- USED FOR:
  - A. #12-10 AWG [4,0-6,0 mm<sup>2</sup>] SOLID OR STRANDED COPPER WIRE
  - B. 221°F [105°C] MAX. OPERATING TEMPERATURE
  - C. 600 V. MAX. VOLTAGE RATING
- INSTALLATION TOOLS:
  - A. PRESSES: CP-871
  - B. APPLICATOR: CA-800, CA9
  - C. DIE INSERTS: CD-800-3, CD9-3B
- WIRE STRIP LENGTH: 1 1/32 <sup>+1/32</sup>/<sub>0</sub> [8,7 <sup>+0,8</sup>/<sub>0</sub>]
- MATERIAL:
  - A. STAMPING: .04" [1,0] THK COPPER, TIN PLATED
  - B. HOUSING: VINYL, YELLOW
- SEE [www.panduit.com](http://www.panduit.com) FOR PACKAGE QUANTITIES INDICATED BY PART NUMBER SUFFIX
- DIMENSIONS IN BRACKETS ARE METRIC EQUIVALENT



LISTED  
587H  
E52164

CERTIFIED  
LR31212

TITLE		FORK TERMINALS, 2 PC. VINYL INSULATED, #12-10		
CUSTOMER DRAWING				
ITEM REVISION NAME		N41079BA/06		
DATASET FILE NAME		N41079BA_DC/06A		
UNLESS OTHERWISE SPECIFIED, DIMENSIONAL TOLERANCES ARE: IN [mm]		MATERIAL:  SEE NOTES		
.x ± .1 [2,54]      .xxx ± .005 [0,13] .xx ± .01 [0,25]      ANGLES ± 5°		DRAWING NUMBER: A41079		
THIRD ANGLE PROJECTION				
DRAWN BY	DATE	CHK	SCALE	SIZE
LM	-	-	N.T.S.	A

REV	DATE	BY	CHK	APR	DESCRIPTION	ECN
06	09.07.12	JBN	LCA	VMB	ADDED METRIC EQUIVALENT. REVISED NOTES. UPDATED DRAWING TO CURRENT STANDARDS.	A41079