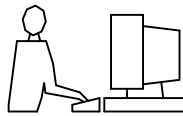
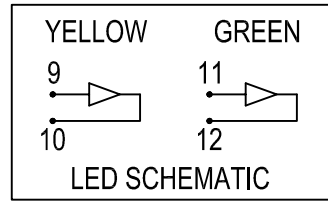
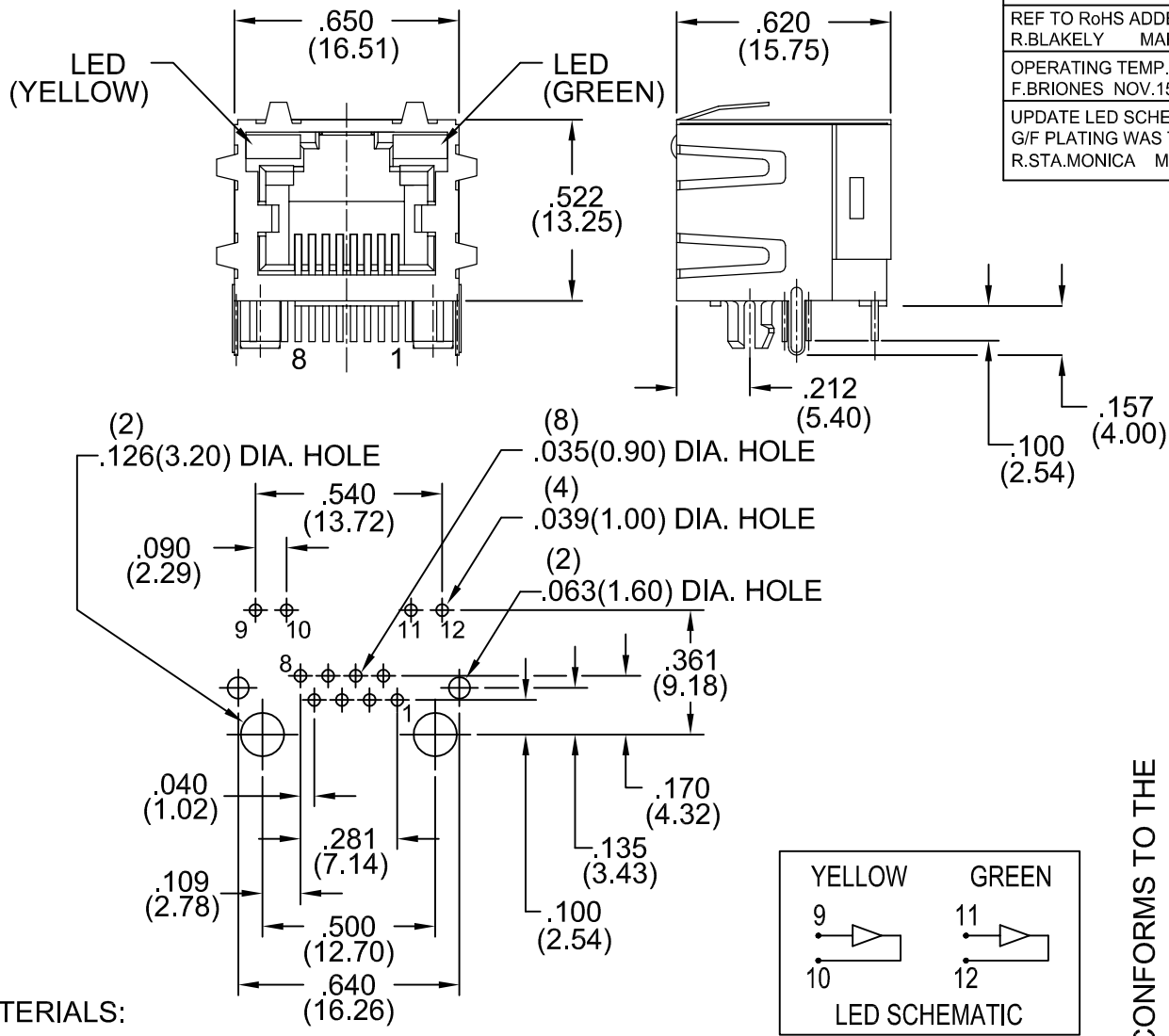


THIS IS A C.A.D. GENERATED DRAWING
DO NOT MAKE MANUAL REVISIONS TO MASTER.



ISSUE NUMBER		
ORIGINAL		①
PCB HOLE LAYOUT NUMBERING ADDED		
R.BLAKEY	DEC.7/04	②
REF TO RoHS ADDED.		
R.BLAKEY	MAR.12/06	③
OPERATING TEMP. ADDED		
F.BRIONES	NOV.15/12	④
UPDATE LED SCHEMATIC		
G/F PLATING WAS TIN PLATING		
R.STA.MONICA	MAY.19/2015	⑤

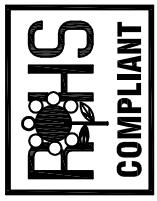


MATERIALS:

- HOUSING: NYLON 46, UL94V-0, COLOR BLACK
- CONTACTS: PHOSPHOR BRONZE, WITH SELECTIVE GOLD PLATING OVER NICKEL ON CONTACT AREA
GOLD FLASH PLATING ON TAILS
- SHIELD: COPPER ALLOY NICKEL PLATED
 - A20-108-261-310 GOLD FLASH
 - A20-108-361-310 15 MICROINCHES OF GOLD
 - A20-108-661-310 30 MICROINCHES OF GOLD
 - A20-108-961-310 50 MICROINCHES OF GOLD

OPERATING TEMPERATURE: -40°C TO +85°C
CAVITY CONFIRMS TO FCC RULES AND REGULATIONS PART 68, SUBPART F.

THIS SERIES FULLY CONFORMS TO THE EUROPEAN UNION DIRECTIVES 2011/65/EU FOR RoHS COMPLIANCY.



SINGLE PORT, 8 POSITIONS WITH LED'S SHIELDED R/ANGLE PCB	ACAD REFERENCE NO. A20-108-261-310	
	DRAWN: F.BRIONES	DATE: NOV.4/03
	CHECKED:	DATE:
	SCALE:	SHEET 1 OF 1
	DRAWING NUMBER	ISSUE
	A20-108-261-310	5