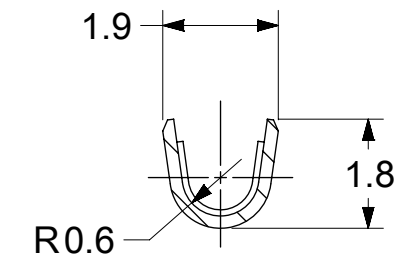
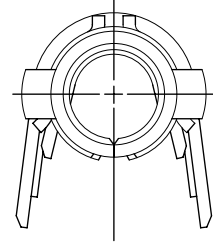
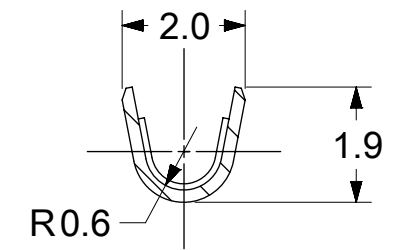


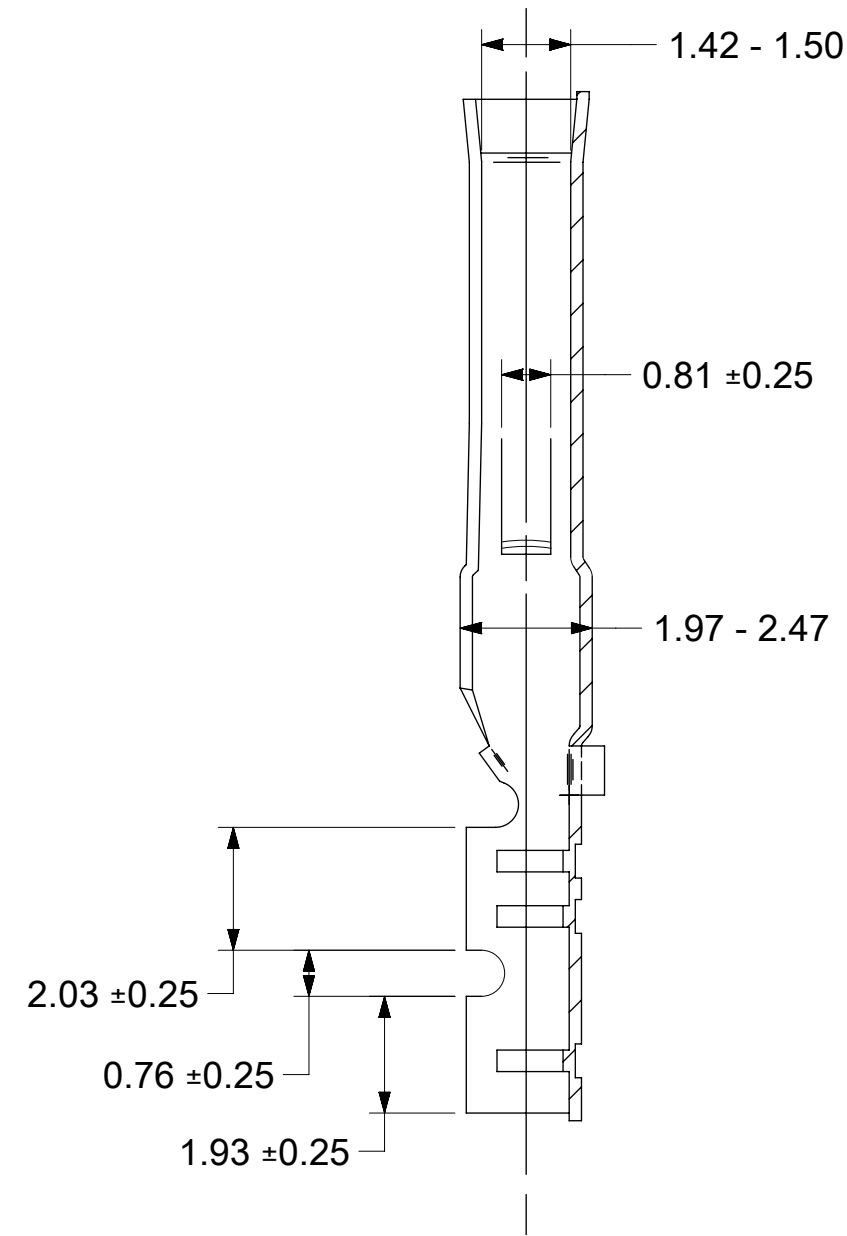
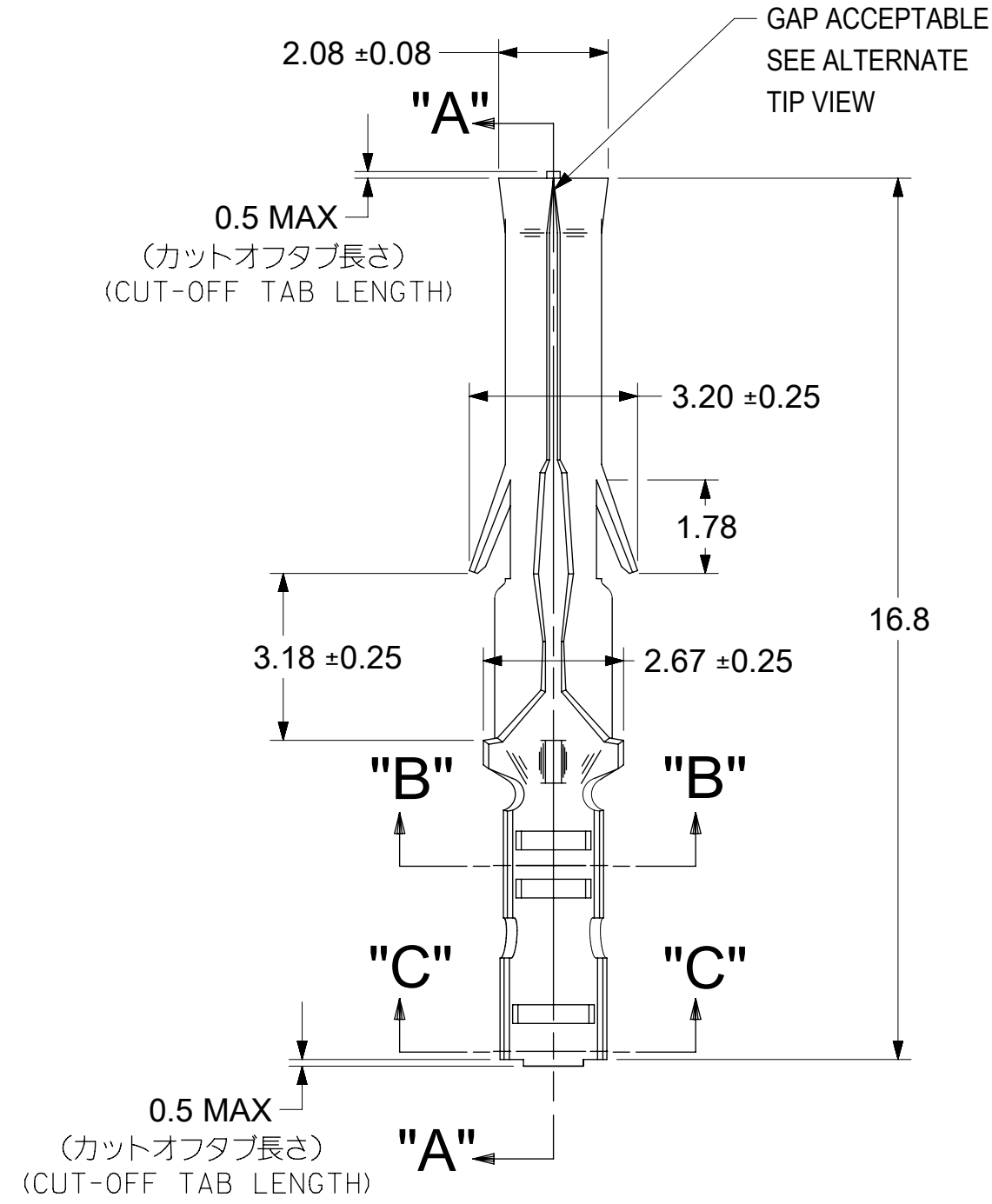
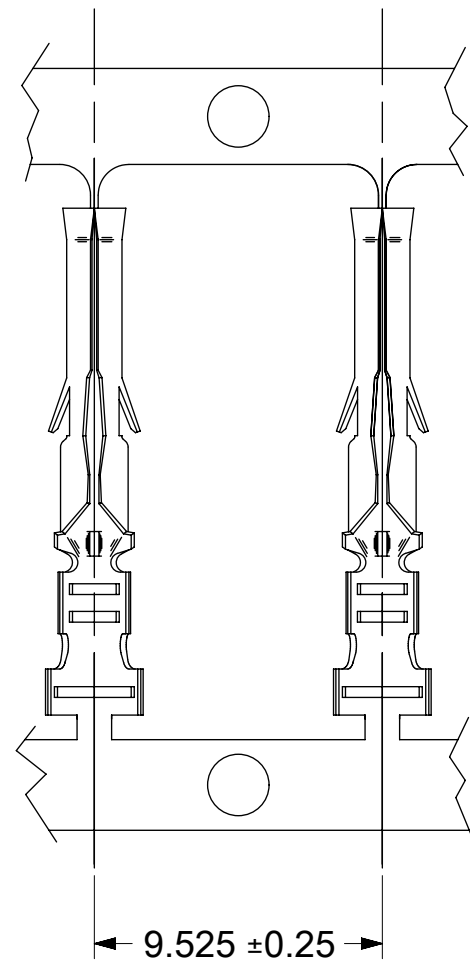
ALTERNATE TIP GEOMETRY  
SEE NOTE 7



SECT. "B-B"



SECT. "C-C"



SECT. "A-A"

NOTES:

1. MATERIAL: BRASS
2. FINISHES: SEE CHART
3. PRODUCT SPECIFICATION: PS-02-06
4. PACKAGE INFORMATION: CHAIN: 18550000-PK  
CHAIN WITH INTERLEAF: 18550001-PK
5. TERMINAL FOR USE WITH (1.57)/.062 DIA. SERIES HOUSINGS AND WILL ACCEPT 22 THRU 28 AWG WIRE WITH 1.1-1.5 INSULATION DIAMETER.
6. PARTS CONFORM TO CLASS B REQUIREMENTS OF COSMETIC SPECIFICATION PS-45499-002.
7. TIP GEOMETRY IS TOOL DEPENDENT. EITHER GEOMETRY IS ACCEPTABLE.

一般公差: ±0.4  
GENERAL TOLERANCES: ±0.4

|  |            |          |                      |
|--|------------|----------|----------------------|
| 0.9 μm MIN. TIN OVER<br>0.5 μm MIN. COPPER | 46999-0998 | 1855T1   | CHAIN WITH INTERLEAF |
|  | 39-00-0338 | 1855T    | CHAIN                |
| PLATING                                    | EDP. NO.   | ENG. NO. | FORM                 |

THIS DRAWING CONTAINS INFORMATION THAT IS PROPRIETARY TO MOLEX ELECTRONIC TECHNOLOGIES, LLC AND SHOULD NOT BE USED WITHOUT WRITTEN PERMISSION

|   |       |                                  |         |   |           |                |     |              |
|---|-------|----------------------------------|---------|---|-----------|----------------|-----|--------------|
| DIMENSION UNITS   | SCALE | CURRENT REV DESC: ADD 46999-0998 |         | <b>molex</b>  |           |                |     |              |
| mm  | 8:1   |                                  |         |   |           |                |     |              |
| GENERAL TOLERANCES (UNLESS SPECIFIED)                   |       | EC NO: 742179                    |         | CRIMP TERMINAL, FEMALE<br>(1.57)/.062 DIA., BRASS FOR 24 THRU 30 GA. WIRE |           |                |     |              |
| ANGULAR TOL   | ± °   | DRWN: MKIPPER 2023/03/02         |         | PRODUCT CUSTOMER DRAWING  |           |                |     |              |
| 4 PLACES  | ±     | CHK'D: MKIPPER 2023/03/13        |         | DOCUMENT NUMBER   |           |                |     |              |
| 3 PLACES  | ±     | APPR: FSMITH 2023/03/13          |         | 18550001-SD   |           | PSD            | 000 | A2           |
| 2 PLACES  | ±     | INITIAL REVISION:                |         | DOC TYPE   DOC PART   REVISION  |           |                |     |              |
| 1 PLACE   | ±     | DRWN: MKIPPER 2019/03/07         |         | MATERIAL NUMBER   |           | CUSTOMER       |     | SHEET NUMBER |
| 0 PLACES  | ±     | APPR: FSMITH 2020/06/05          |         | 1855  |           | GENERAL MARKET |     | 1 OF 1       |
| DRAFT WHERE APPLICABLE<br>MUST REMAIN WITHIN DIMENSIONS |       | THIRD ANGLE PROJECTION           | DRAWING | SERIES  | SEE TABLE |                |     |              |
|   |       |                                  | C-SIZE  | 1855  |           |                |     |              |

|                      |             |       |
|----------------------|-------------|-------|
| 材料<br>MATERIAL       | 黄銅<br>BRASS | 0.2 t |
| 仕上げ<br>FINISH        | — / —       |       |
| 適用電線範囲<br>WIRE RANGE | AWG#22-#28  |       |
| 被覆外径<br>INS. RANGE   | φ 1.1~1.5   |       |

|                 |    |              |            |          |
|-----------------|----|--------------|------------|----------|
| DOCUMENT STATUS | P1 | RELEASE DATE | 2023/03/13 | 23:35:26 |
|-----------------|----|--------------|------------|----------|