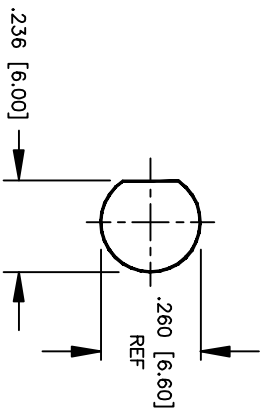
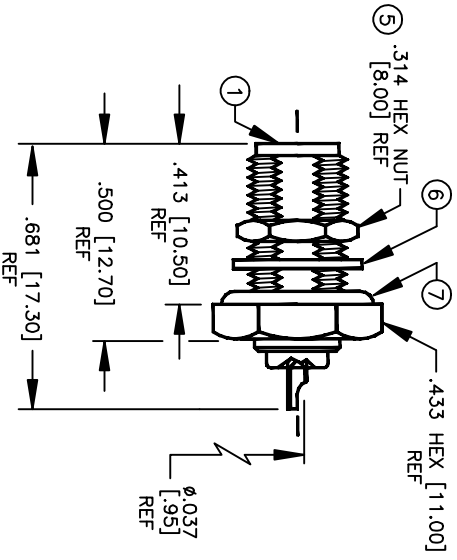


SPECIFICATION CONTROL DRAWING

THIS DRAWING CONTAINS INFORMATION PROPRIETARY TO RF INDUSTRIES, LTD. ANY UNAUTHORIZED USE OF THIS DRAWING IS EXPRESSLY PROHIBITED. ANY VIOLATION IS PUNISHABLE UNDER U.S. COPYRIGHT LAWS.

008974

REV	DESCRIPTION	DWN	DATE	APPROVED
A	ENGINEERING RELEASE	KMM	10/25/95	R. RICE
B	ADD SOLDER POT ID	KMM	8/25/96	R. RICE



RECOMMENDED MOUNTING HOLE
 .094 [2.40] MAX PANEL THICKNESS

SPECIFICATIONS:

IMPEDANCE: 50 OHMS
 WORKING VOLTAGE: 335 VRMS @ SEA LEVEL
 FREQUENCY RANGE: 0-12.4 GHz

ITEM	DESCRIPTION	QTY	MATERIAL	FINISH
7	O RING	1	S.I. RUBBER	RED
6	LOCK WASHER [LKW-250]	1	BRASS	GOLD
5	HEX NUT [HEX-250-36S]	1	BRASS	GOLD
4	DIELECTRIC	1	PTFE	NONE
3	DIELECTRIC	1	PTFE	NONE
2	PIN	1	BeCu	GOLD
1	BODY	1	BRASS	GOLD

DIMENSIONS ARE IN INCHES
 AND [MILLIMETERS]
 UNLESS OTHERWISE NOTED
 TOLERANCES ARE:

DECIMALS DIAMETER

DRAWN
 K. MAXWELL 8/25/96

CHECKED

ORU DRAWN
 K. MAXWELL 10/25/95

APPROVALS DATE

DIVISION OF RF INDUSTRIES, LTD.

7610 MIRAMAR RD
 SAN DIEGO, CA 92126
 (619)549-6340
 (619)549-6345 FAX

RSA-3251-1-10

SMA FEMALE BULKHEAD, SOLDER, REAR MNT W/O RING

SIZE	CABLE GROUP	DWG NO.	REV
A	N/A	8570	B
SCALE: 2:1	CAD FILE	SHEET 1 OF 1	