

6

5

4

3

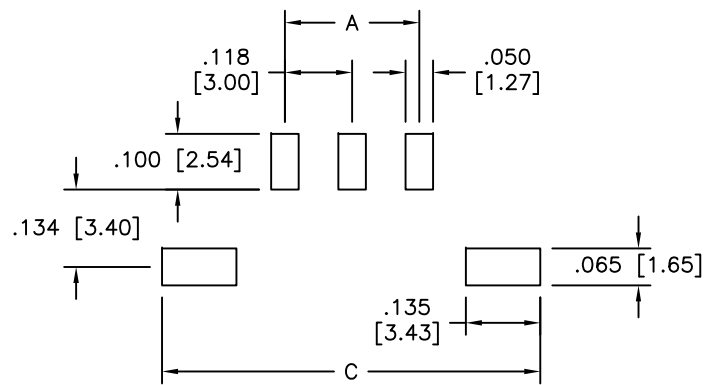
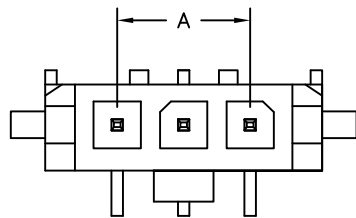
2

1

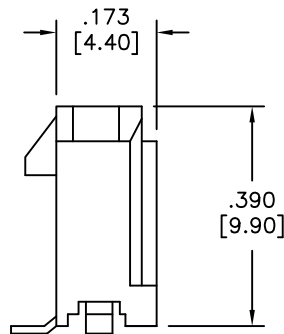
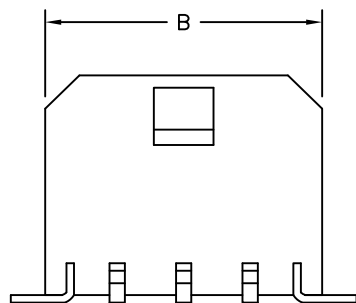
APPROVED: \_\_\_\_\_

DATE: \_\_\_\_\_ TITLE: \_\_\_\_\_

Rev	AWO #	Description	Date	Appr
-		RELEASED	12/01/09	



RECOMMENDED PCB LAYOUT



**SPECIFICATIONS:**

Material:  
 Insulator: Hi-temp thermoplastic, rated UL 94V-0  
 Insulator color: Black  
 Contacts: 0.64mm Square Pin, Brass Tin plated

**Plating:**  
 Tin over Copper underplate overall

**Electrical:**  
 Voltage rating: 250V AC, DC  
 Current rating: 5A AC, DC  
 Insulation resistance: 1000 Mohms min  
 Dielectric withstanding voltage: 1500 VAC for 1 minute

**Temperature Rating:**  
 Ambient temperature: -40°C to +105°C  
 Environmental:  
 Lead free, RoHS compliant.



Positions: 2 thru 12

A = .118 [3.00] x No. of Spaces  
 B = .118 [3.00] x No. of Positions + .146 [3.70]  
 C = .118 [3.00] x No. of Positions + .232 [8.20]

UNLESS OTHERWISE SPECIFIED ALL DIMENSIONS ARE INCHES [MM] TOLERANCES: EXCEPT AS NOTED	
INCHES	HOLES
.X ± .10	Ø.X ± .10
.XX ± .020	Ø.XX ± .015
.XXX ± .015	Ø.XXX ± .010
APPROVALS	
DRAWN	DATE
CHECKED	12/01/09
APPROVED	



909 Rahway Avenue,  
 Union, NJ 07083  
 Phone: 908-687-5000  
 Fax: 908-687-5710

TITLE		SINGLE ROW, .118"(3.0MM) PITCH, SMT HEADER TIN PLATED, W/ FITTING NAIL	
SIZE	PART NO.	REV.	
X	DML-1-XX-V-T-SMT	-	
REF:	S00016T	SCALE:	NTS
		SHEET 1 OF 1	

6

5

4

3

2

1