

SPICE-Equivalent circuit model library

Table 1. Equivalent circuit data

Part Number	L (μ H)	F _{res} (MHz)	C1 (pF)	R1 (Ω)	R2 Nominal DCR of winding (Ω)
HCM1A1305-R10-R	0.1	146.2	11.84	290.68	0.0005
HCM1A1305-R22-R	0.22	93.8	13.08	445.28	0.0006
HCM1A1305-R33-R	0.33	74.7	13.77	554.48	0.0008
HCM1A1305-R47-R	0.47	61.2	14.39	671.37	0.0008
HCM1A1305-R56-R	0.56	55.4	14.72	738.10	0.0012
HCM1A1305-R68-R	0.68	49.7	15.08	819.83	0.00115
HCM1A1305-R82-R	0.82	44.7	15.44	907.20	0.0014
HCM1A1305-1R0-R	1	40.0	15.83	1010.00	0.0021
HCM1A1305-1R5-R	1.5	31.8	16.66	1257.68	0.0028
HCM1A1305-1R8-R	1.8	28.7	17.05	1388.03	0.004
HCM1A1305-2R2-R	2.2	25.7	17.48	1547.17	0.0046
HCM1A1305-3R3-R	3.3	20.4	18.40	1926.57	0.0077
HCM1A1305-4R7-R	4.7	16.7	19.24	2332.70	0.011
HCM1A1305-5R6-R	5.6	15.2	19.67	2564.58	0.012
HCM1A1305-6R0-R	6	14.6	19.84	2662.09	0.0125
HCM1A1305-6R8-R	6.8	13.6	20.16	2848.56	0.013
HCM1A1305-7R8-R	7.8	12.6	20.51	3068.00	0.0168
HCM1A1305-8R2-R	8.2	12.2	20.64	3152.12	0.0175
HCM1A1305-100-R	10	10.9	21.16	3509.31	0.019
HCM1A1305-120-R	12	9.9	21.65	3873.03	0.021
HCM1A1305-150-R	15	8.7	22.27	4369.88	0.029
HCM1A1305-220-R	22	7.0	23.37	5375.73	0.045
HCM1A1305-330-R	33	5.6	24.60	6694.00	0.075

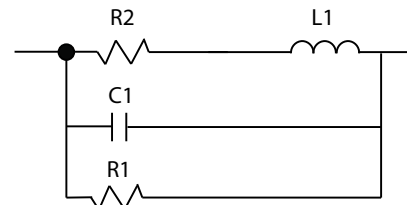


Figure 1. Equivalent circuit

Disclaimer

The data provided is for reference and is intended for evaluation purposes only. Users should verify all intended results in the end application.

Eaton
Electronics Division
 1000 Eaton Boulevard
 Cleveland, OH 44122
 United States
www.eaton.com/electronics

© 2018 Eaton
 All Rights Reserved
 Printed in USA
 Publication No. HCM1A1305 Spice
 April 2018