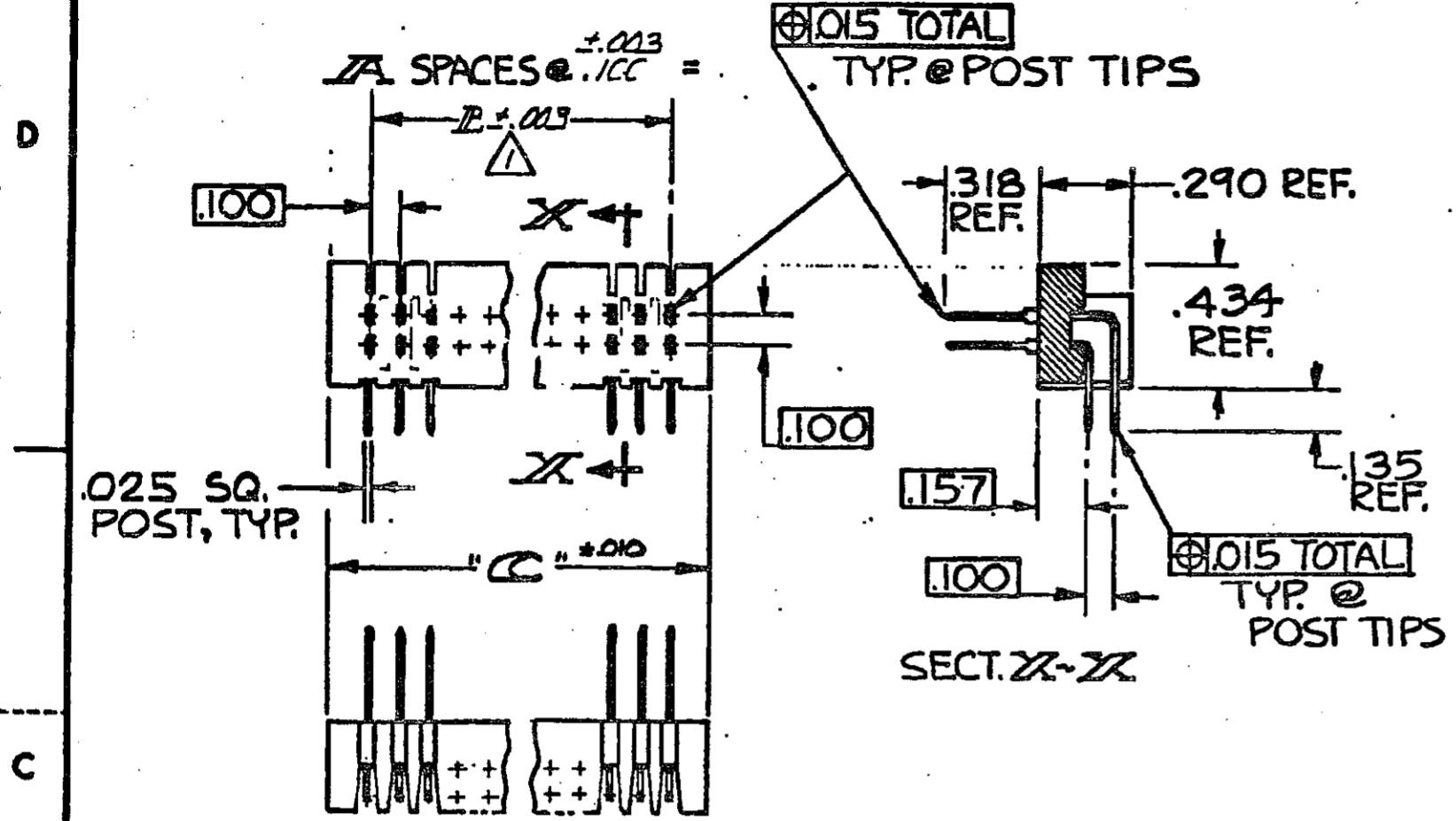


DRAWING MADE IN THIRD ANGLE PROJECTION

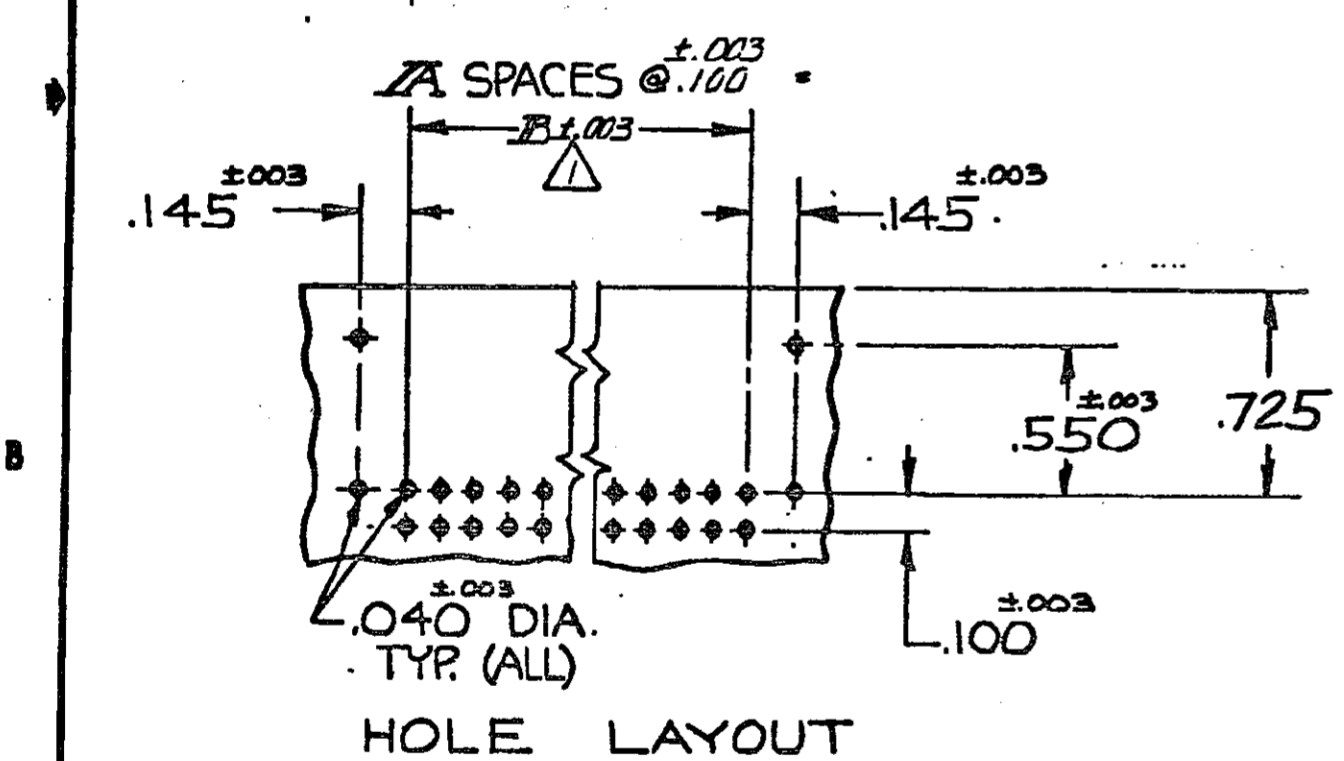
© COPYRIGHT 1981, 92 BY AMP INCORPORATED, HARRISBURG, PA. ALL INTERNATIONAL RIGHTS RESERVED. AMP INCORPORATED PRODUCTS COVERED BY U. S. AND FOREIGN PATENTS AND/OR PATENTS PENDING.

LOG AD 39

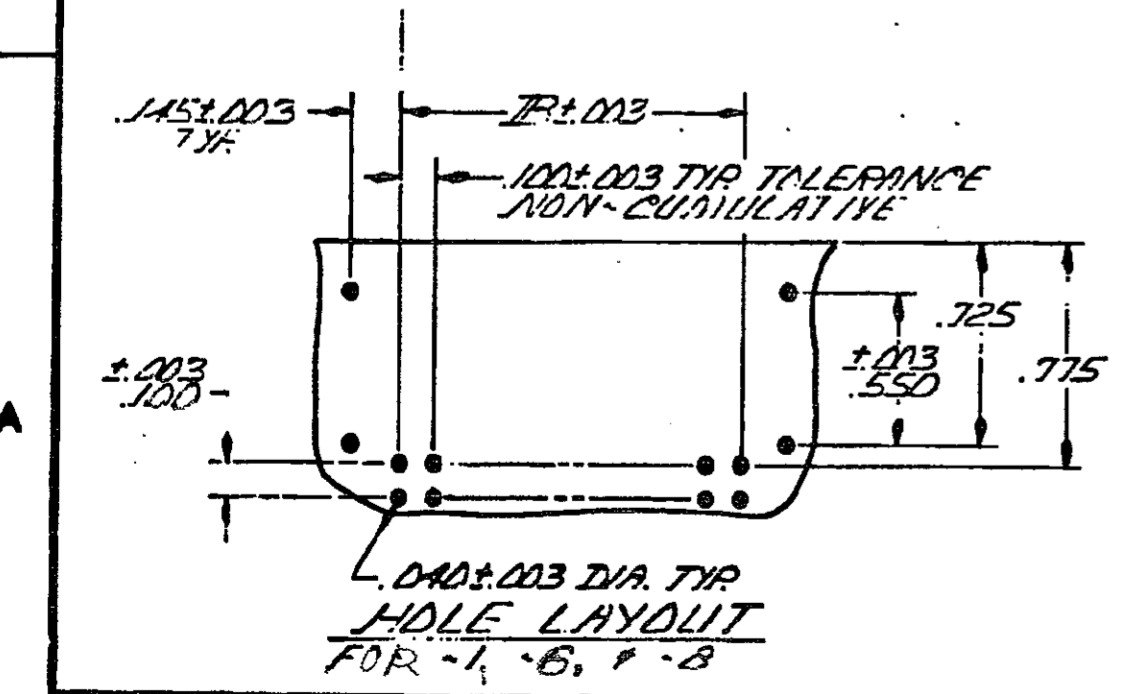
REVISIONS						
P	F	ZONE/LTR	DESCRIPTION	DATE	DWN	APVD
		L	REVISED PER ECO-15-008006	17NOV2015	NK	MM



△ TOL. NON-CUMULATIVE.



HOLE LAYOUT



Ø.040±.003 DIA. TYP. HOLE LAYOUT FOR 1, 6, 8

102791-7	1.830	1.600	16	34	1-102792-1
102791-5	3.120	2.900	29	61	1-102792-0
102791-1	1.430	1.200	12	26	-9
102791-2	.530	.300	3	8	-8
102791-3	.920	.700	7	16	102792-7
102791-1	.430	.200	2	6	102792-6
1-102791-0	1.130	.900	9	20	102792-5
102791-8	2.630	2.400	24	50	102792-4
102791-6	2.130	1.900	19	40	102792-3
102791-4	1.030	.800	8	18	102792-2
102791-2	.630	.400	4	10	102792-1
USED WITH PART NUMBER	C DIM	B DIM	A SPACES	NUMBER OF POSITIONS	PART NUMBER

102792

UNLESS OTHERWISE SPECIFIED DIMENSIONS ARE IN INCHES. TOLERANCES ON: DECIMALS ±.005 ANGLES ± MATERIAL 156-FLAME RETARDANT THERMOPLASTIC. COLOR-BLACK. POSTS-COPPER ALLOY FINISH POSTS: .00050 GOLD IN CONTACT AREA. GOLD FLASH ON REMAINDER OF POST. .00050 NICKEL UNDERPLATE	CONTRACT NO DR CHG APPD APPD DSGN APPD OTHER APPD	NAME ASSEMBLY, HEADER, AMPMODU, DOUBLE ROW. 100 Ø RIGHT ANGLE SIZE CODE IDENT NO DRAWING NO C 00779 102792 SCALE 2-1 SHEET 1 OF 1
	DR S. A. Brackley 3-25-88 CHG J. Harrington 3-26-96 APPD J. Harrington 3-26-96 APPD	TE Connectivity 102792