

XT232A1FAL2

Telemecanique Capacitive proximity sensors
XT, cylindrical Ø 32 mm, plastic, Sn 20 mm,
cable 2 m



Main

| | |
|------------------------------------|--|
| Range of Product | Telemecanique Capacitive proximity sensors XT |
| Sensor Type | Capacitive proximity sensor |
| Product Specific Application | Detection of insulated or conductive materials |
| Sensor name | XT2 |
| Sensor design | Cylindrical Ø 32 mm plain |
| Size | 80 mm |
| Body type | Fixed |
| Detector flush mounting acceptance | Non flush mountable |
| Material | Plastic |
| Enclosure Material | Plastic |
| Type of output signal | Discrete |
| Wiring Technique | 2-wire |
| [Sn] nominal sensing distance | 0.79 in (20 mm) |
| Discrete output function | 1 NO |
| Output circuit type | AC |
| Electrical connection | Cable |
| Cable length | 6.56 ft (2 m) |
| [Us] rated supply voltage | 24...240 V AC 50...60 Hz 24 V DC |
| Maximum delay response | 30 ms |
| IP degree of protection | IP67 double insulation conforming to IEC 60529 |

Complementary

| | |
|---------------------------------|---------------------------------------|
| Detection face | Frontal |
| [Sa] assured operating distance | 0.00...0.59 in (0...15 mm) |
| Adjustment zone | 0.00...0.87 in (0...22 mm) |
| Differential travel | < 1...20 % Sr |
| Repeat accuracy | < 5 % Sr |
| Wire insulation material | PVC |
| Status LED | Output state indication 1 LED yellow) |
| Supply voltage limits | 20...265 V AC |
| Switching frequency | <= 15 Hz |
| Maximum voltage drop | <10 V closed) |
| Current consumption | < 4 mA |
| Maximum delay first up | 200 ms |
| Maximum delay recovery | 30 ms |
| Maximum switching current | 300 mA |
| Marking | CE |
| Setting-up | Sensitivity by potentiometer |
| Length | 3.15 in (80 mm) |
| Net Weight | 0.88 lb(US) (0.4 kg) |

The information provided in this documentation contains general descriptions and/or technical characteristics of the performance of the products contained herein. This documentation is not intended as a substitute for and is not to be used for determining suitability or reliability of these products for specific user applications. It is the duty of any such user or integrator to perform the appropriate and complete risk analysis, evaluation and testing of the products with respect to the relevant specific application or use thereof. Neither Schneider Electric Industries SAS nor any of its affiliates or subsidiaries shall be responsible or liable for misuse of the information contained herein.

Environment

| | |
|---------------------------------------|--|
| Standards | EN/IEC 60947-5-2 |
| Product Certifications | cULus |
| Ambient Air Temperature for Operation | 14...140 °F (-10...60 °C) |
| Vibration resistance | 10 gn 1 mm 10...55 Hz)IEC 60068-2-6 |
| Shock resistance | 30 gn 11 ms IEC 60068-2-27 |
| Resistance to electrostatic discharge | 4 KV contact IEC 61000-4-2 8 kV air IEC 61000-4-2 |
| Resistance to electromagnetic fields | 2.74 V/m (3 V/m) IEC 61000-4-3 |
| Resistance to fast transients | 2 kV IEC 61000-4-4 |

Ordering and shipping details

| | |
|-----------------------|----------------------------------|
| Category | 22490-SENSORS-ULTRASONIC (XX5,6) |
| Discount Schedule | DS2 |
| GTIN | 3389119025959 |
| Nbr. of units in pkg. | 1 |
| Package weight(Lbs) | 7.34 oz (208.0 g) |
| Returnability | No |
| Country of origin | CN |

Packing Units

| | |
|------------------------------|-------------------------|
| Unit Type of Package 1 | PCE |
| Package 1 Height | 1.57 in (4 cm) |
| Package 1 width | 5.12 in (13 cm) |
| Package 1 Length | 5.51 in (14 cm) |
| Unit Type of Package 2 | S02 |
| Number of Units in Package 2 | 25 |
| Package 2 Weight | 12.42 lb(US) (5.635 kg) |
| Package 2 Height | 5.91 in (15 cm) |
| Package 2 width | 11.81 in (30 cm) |
| Package 2 Length | 15.75 in (40 cm) |

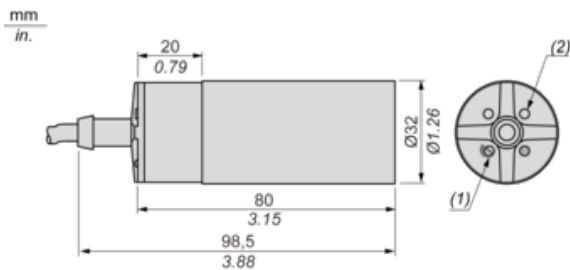
Offer Sustainability

| | |
|----------------------------|---|
| California proposition 65 | WARNING: This product can expose you to chemicals including: Diisononyl phthalate (DINP), which is known to the State of California to cause cancer, and Di-isodecyl phthalate (DIDP), which is known to the State of California to cause birth defects or other reproductive harm. For more information go to www.P65Warnings.ca.gov |
| REACH Regulation | REACH Declaration |
| REACH free of SVHC | Yes |
| EU RoHS Directive | Pro-active compliance (Product out of EU RoHS legal scope) EU RoHS Declaration |
| Toxic heavy metal free | Yes |
| Mercury free | Yes |
| RoHS exemption information | Yes |

Contractual warranty

| | |
|----------|-----------|
| Warranty | 18 months |
|----------|-----------|

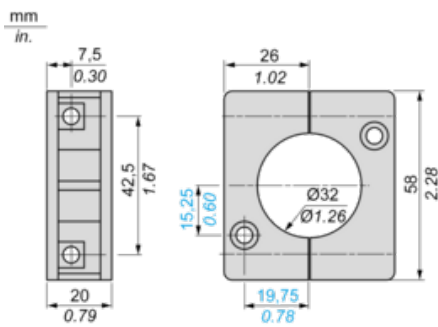
Dimensions



(1) Adjustment potentiometer

(2) LED

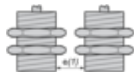
Mounting Accessory Included



Setting-up

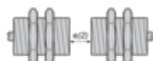
Minimum Mounting Distances (mm)

Side by side



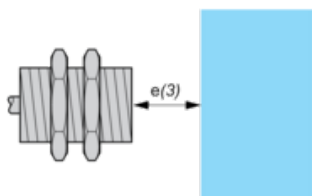
$e(1) \geq 65$

Face to face



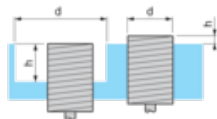
$e(2) \geq 120$

Facing a metal object



$e(3) \geq 60$

Mounted in support

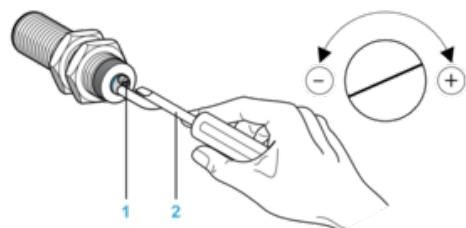


$d \geq 100$

$h \geq 30$

Adjustment

Sensitivity Adjustment



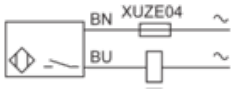
(1) Adjustment potentiometer

(2) Screwdriver (included with sensor)

Wiring Diagram

Pre-cabled

2-wire AC NO Output



(BU) Blue

(BN) Brown