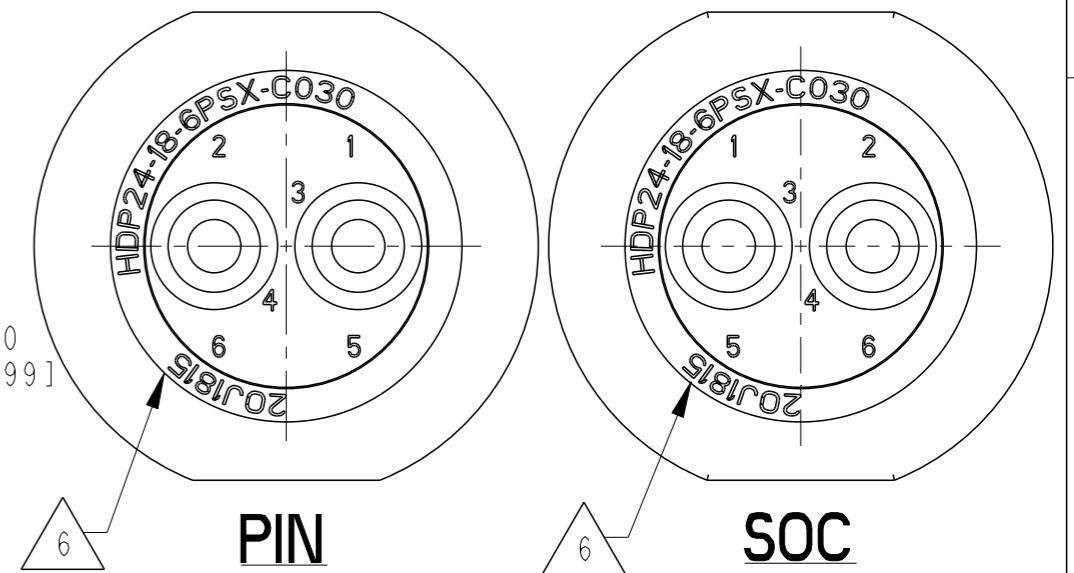
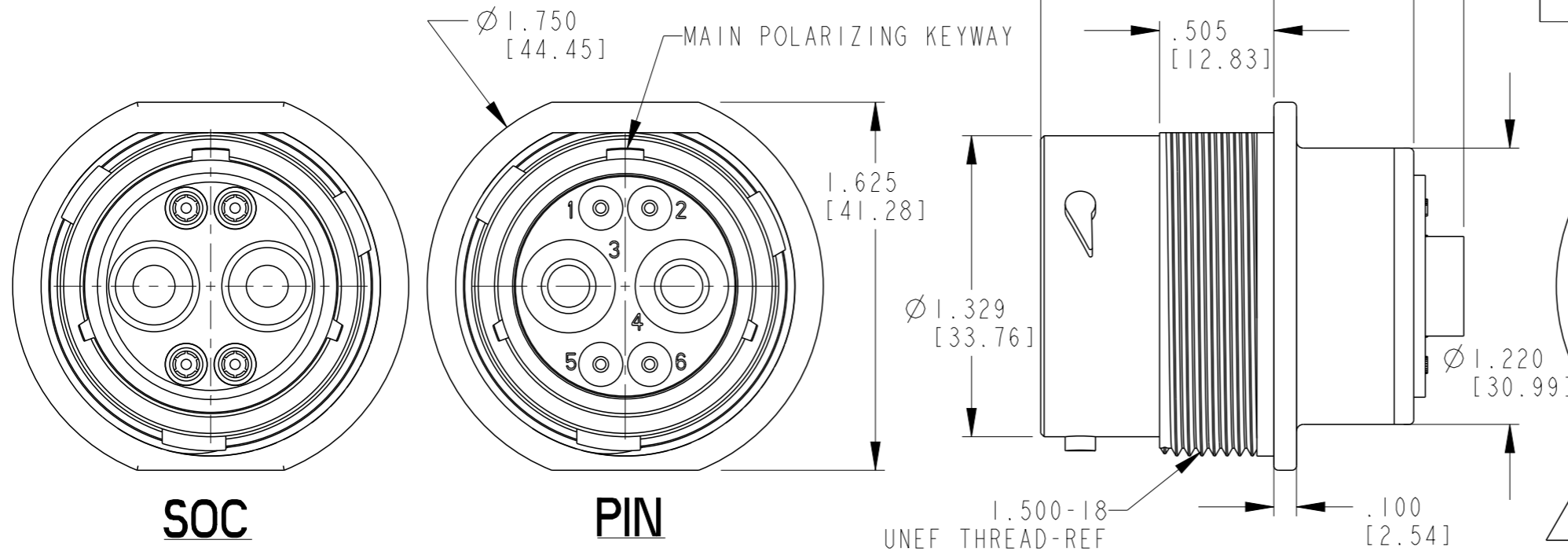


P	LTR	DESCRIPTION	DATE	DWN	APVD
	NC	NEW RELEASE PER E.O. PI9153	01MAR2006	-	RDR
	A	REVISED PER PCN E-20-013840	18SEP2020	MK	IG
	A1	REVISED PER PCN E-20-017587	10MAR2021	CO	IG



6 DATE CODE: IDENTIFIES THE YEAR, MONTH, DAY AND HOUR OF ASSEMBLY.
 YEAR: FIRST AND SECOND DIGITS. (14=2014)
 MONTH: THIRD DIGIT, EXCLUDING I.A=JAN., B=FEB., C=MARCH...(K=OCT.)
 DAY: FOURTH AND FIFTH DIGIT (14=14th DAY)
 HOUR: SIXTH AND SEVENTH DIGIT (11=11AM)

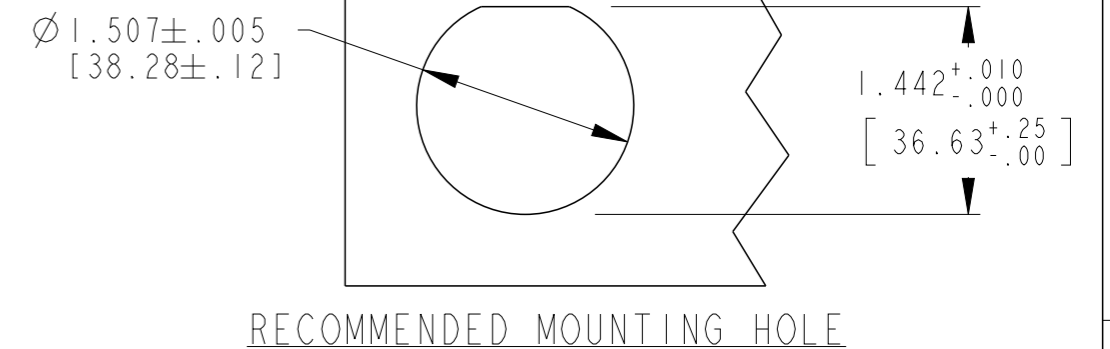
5. THIS PART MATES WITH HDP26-18-6P/S*-C030. * = TYPE OF SEAL.

4. FOR CONTACT AND WIRE PERFORMANCE AND APPLICATION CHARACTERISTICS SEE ENVELOPE DWG. 0425-015-0000 AND 0425-021-0000.

3. RECOMMENDED PANEL THICKNESS: .062[1.58] TO .187[4.76].

2. THIS CONNECTOR WILL ACCOMMODATE THE FOLLOWING WIRE INSULATION DIAMETERS.

SEAL TYPE	CONTACT SIZE	MIN O.D.	MAX O.D.	4 WIRE GAUGE AWG [mm ²] RANGE
N	4	.280 [7.11]	.292 [7.42]	6 [13mm]
E	4	.261 [6.63]	.292 [7.42]	6 [13]

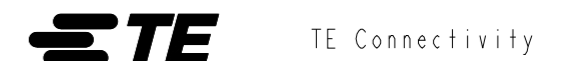


1. THIS RECEPTACLE TO BE USED WITH 114020-90 (ALUMINUM) OR 2411-002-1805 (PLASTIC) PANEL NUT AND 2414-002-1886 LOCKWASHER.

THIS DRAWING IS A CONTROLLED DOCUMENT.

DIMENSIONS: INCH [MM]	TOLERANCES UNLESS OTHERWISE SPECIFIED:
	0 PLC ±-
	1 PLC ±-
	2 PLC ±-
	3 PLC ±.025
	4 PLC ±-
	ANGLES ±-
MATERIAL	FINISH
-	-

DWN	08FEB2006
R. MESSENGER	
CHK	28FEB2002
B. BYFORD	
APVD	16FEB2006
S. BEARD	
PRODUCT SPEC	108-151015
APPLICATION SPEC	114-151015
WEIGHT	34g
CUSTOMER DRAWING	



NAME
 RECEPTACLE CONNECTOR
 18-6 ARRANGEMENT
 HDP20 SERIES -C030 MODIFICATION

SIZE	CAGE CODE	DRAWING NO	RESTRICTED TO
A3	00779	©-HDP24-18-6PSX-C030	-
SCALE	1.000	SHEET	1 OF 1
REV	A1		