



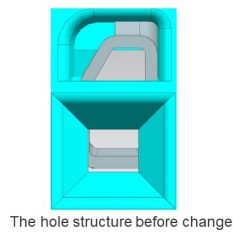
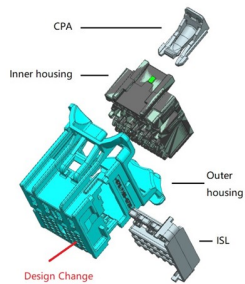
# Product Change Notification (PCN)

PCN Number	507022	Date Issued	July 10, 2019
Reason for Change	Change to Product		
Change Type Description	This letter is to inform you that changes are being made to the part(s) identified in this Notice. The change may affect the fit, form, function or appearance of the parts, or it may result in a change to the specification. The pictures below show an example of the possible differences.		
Assessment of Change	Product will be fully qualified before it is shipped. Qualification reports will be available after below listed date		
Internal Molex Qualification Date	September 15, 2019		
Sample Availability Date (Changed Part)	September 15, 2019		
Planned Implementation Date	November 29, 2019		
Method of Identifying Change	New part number		
Recommended Replacement Parts	Please see the attached replacement parts list .xls file.		

RELEASED

## Before Change

▪ Impact Product Image

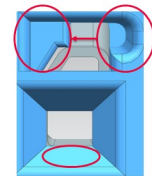


The hole structure before change

## After Change

**Overview**

- Molex has decide to update the hole structure as red cycle shows for mating with terminal better.
- Product Impact
  - Terminal insert could be more smoothly and flexible.
- Part Number Impact
  - New Part Number will replace old Part Number.
  - For old Part Number:  
Last Time Ship: 2019-12-13  
Last Time Buy: 2019-10-04
- Qualification Reports and samples available upon request after the date shown above



The hole structure after change



## Product Change Notification (PCN)

---

You may address any technical inquiries regarding this PCN by sending E-mail to [pcn\\_coordinator@molex.com](mailto:pcn_coordinator@molex.com) or your Local Sales Engineer.

Note: While responding, please retain "**PCN Notification:507022**" in the e-mail Subject line for faster response.

RELEASED

**Molex, LLC**  
2222 Wellington Court  
Lisle, IL 60532  
TEL: 630-969-4747  
[www.molex.com](http://www.molex.com)

## Replacement parts list

Molex Part Number	Replacement part number:
1600140001	1600140011
1600140002	1600140012
1600140003	1600140013
1600140004	1600140014
1600290001	1600290011
1600290002	1600290012
1600290003	1600290013
1600290004	1600290014
1600280001	1600280011
1600280002	1600280012
1600280003	1600280013
1600280004	1600280014
1600280005	1600280015
1600280006	1600280016
1600280007	1600280017
1600280008	1600280018
1600270001	1600270011
1600270002	1600270012
1600270003	1600270013
1600270004	1600270014
1600270005	1600270015
1600270006	1600270016
1600270007	1600270017
1600270008	1600270018