

- 1
- 2
- 3
- 4
- 5
- 6
- 7
- 8
- 9
- 10
- 11
- 12
- 13
- 14
- 15
- 16
- 17
- 18

**STANDARD EXECUTIONS**

- **BEL-AD-AN**: anodised aluminium body natural colour.  
 - **BEL-AD-ANB**: anodised aluminium body black colour.  
 See Bull's eye levels and screw-on levels technical data (on page 780).

**FLUID HOUSING**

Transparent polyamide based technopolymer.

**CONTRAST FLUID**

**K**: colourless.

**SENSITIVITY OF THE BULL'S EYE LEVEL**

# **30**: movement of the bubble by 2 mm for an inclination of the body of 30 angle minutes with respect to the horizontal surface.

**BOTTOM INSULATION**

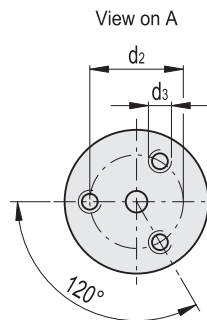
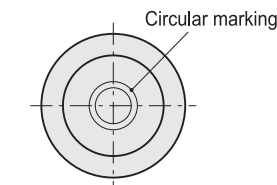
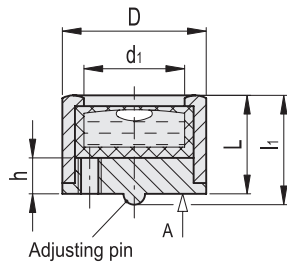
Hemihydrate gypsum.

**FEATURES AND APPLICATIONS**

BEL-AD bull's eye levels are used to control the horizontal positioning of jigs.

By acting on the tightening of the screws, in the three rear threaded holes, it will be possible to get the desired adjustment with respect to the contact surface that is achieved when the bubble is in the centre of the circular marking.

The adjusting pin allows the adjustment of the bubble acting as a pivot point.



Conversion Table	
1 mm = 0,039 inch	
D	
mm	inch
17	0.67
20	0.79
24	0.94

Code	Description	D	d1	d2	d3	L	l1	h	
156401	BEL-AD-AN-17-K-30	17	13	12	M 3	13	14.5	5	6
156402	BEL-AD-AN-20-K-30	20	13	14	M 3	15	17	5	8
156403	BEL-AD-AN-24-K-30	24	15	16	M 3	17	20	5	12
156406	BEL-AD-ANB-17-K-30	17	13	12	M 3	13	14.5	5	6
156407	BEL-AD-ANB-20-K-30	20	13	14	M 3	15	17	5	8
156408	BEL-AD-ANB-24-K-30	24	15	16	M 3	17	20	5	12