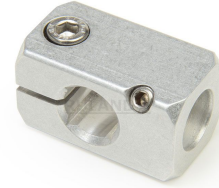
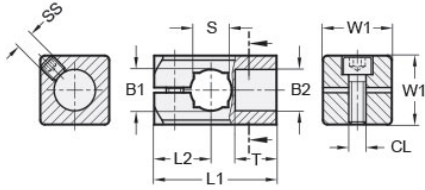




MT12/12-CC90-A

Ruland T-Connector Mini-Clamp, Thru Holes 12mmx12mm, Length 35.5mm, Aluminum



Description

Ruland MT12/12-CC90-A is a 90 degree connector with a thru hole for 12mm round or 10mm square tube, blind hole for 12mm round blind hole, and 35.5mm overall length. It is designed to fit on Ruland tubes and flange bolt bases that begin with MT12. MT12/12-CC90-A is aluminum and screws are 304 stainless steel for use in most industrial applications. This 90 degree connector clamp is commonly used to support tubes for mounting sensors, screens, reflectors, plexiglass machine guards, and other industrial components. The blind hole reduces complication in assembly and limits the possibility of a mistake being made by inserting a tube too far into the connector for it to function properly. The thru hole allows designers flexibility to reposition the clamp or tube as needed. MT10:12-ALK-M5-20 adjustable clamping lever can be used in place of standard clamp hardware for rapid repositioning of the tube or connector without the need for tools. MT12/12-CC90-A is manufactured by Otto Ganter, inventoried by Ruland, and RoHS3 compliant.

Product Specifications

| | | | |
|--------------------------------|--------------|--------------------------------|-----------------------|
| Thru Hole 1 Diameter B1 | 12 mm | Thru Hole 2 Diameter B2 | 12 mm |
| Thru Hole Tolerance | +0.11/-0 mm | Square Thru Hole S | 10 mm |
| Body Length L1 | 35.5 mm | Edge To Center L2 | 16.5 mm |
| Screw To Edge LS | 8 mm | Hole Depth T | 12 mm |
| Width & Height W1 | 20 mm | Clamp Screw CL | M5 |
| Set Screw SS | M5 | Weight (lbs) | 0.098900 |
| Material Specification | Aluminum | Manufacturer | JW Winco/ Otto Ganter |
| UPC | 634529231890 | Country of Origin | Germany |
| Tariff Code | 7609.00.0000 | UNSPC | 31162908 |

Note 1 Performance ratings are for guidance only. The user must determine suitability for a particular application.

Prop 65  **WARNING** This product can expose you to the chemical Nickel (metallic), known to the State of California to cause cancer. For more information go to www.P65Warnings.ca.gov.