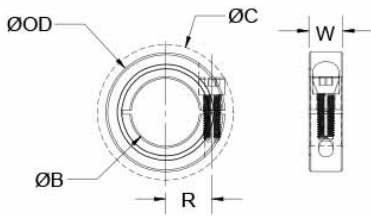




MCL-48-ST

Ruland MCL-48-ST, 48mm One-Piece Shaft Collar, 316 Stainless Steel, Clamp Style, 78mm OD, 19mm Width



Description

Ruland MCL-48-ST is a one-piece shaft collar with a 48mm bore, 78mm OD, and 19mm width. The clamp style design does not mar the shaft, is easy to remove, and is indefinitely adjustable. It is commonly used for guiding, spacing, stopping, mounting, and component alignment. Equipment manufacturers benefit from the tightly controlled face to bore perpendicularity (TIR of ? .05mm). Perpendicularity is critical for alignment when the shaft collar is used as a load bearing face, mechanical stop, or for mounting components such as gears or bearings. Proprietary processes have been developed by Ruland to maintain superior fit, finish, and holding power. MCL-48-ST is stamped with the Ruland name and bore size for ease of identification. Forged screws test beyond ANSI standards to ensure maximum holding power. MCL-48-ST is manufactured from solid bar stock sourced from select North American mills and machined to a fine burr free finish. Ruland uses 316 stainless steel with hardware of like material for consistent corrosion resistance. Stainless steel hardware undergoes a proprietary surface treatment process to prevent galling. MCL-48-ST is RoHS3 and REACH compliant and manufactured in our Marlborough, MA factory under strict controls using proprietary processes.

Product Specifications

| | | | |
|------------------------------------|---|-----------------------------------|-----------------------|
| Bore (B) | 48 mm | Bore Tolerance | +0.050 mm / +0.012 mm |
| Outer Diameter (OD) | 78 mm | Clearance Diameter (C) MAX | 84.7 mm |
| Width (W) | 19 mm | Width Tolerance | +0.076 mm / -0.254 mm |
| Recommended Shaft Tolerance | +0.000 mm / -0.013 mm | Forged Clamp Screw | M8 x 25 |
| Screw Material | 316 Stainless Steel | Hex Wrench Size | 6.0 mm |
| Screw Finish | Bright | Seating Torque | 23 Nm |
| Screw Location (R) | 32.00 mm | Number of Screws | 1 ea |
| Material Specification | Type 316L Austenitic, Non-Magnetic Bar | Finish Specification | Bright, No Plating |
| Manufacturer | Ruland Manufacturing | Country of Origin | USA |
| Temperature | -40°F to 350°F (-40°C to 176°C) | Weight (lbs) | 0.944500 |
| UPC | 634529128718 | Tariff Code | 8483.60.8000 |
| UNSPC | 31162811 | | |
| Note 1 | Performance ratings are for guidance only. The user must determine suitability for a particular application. | | |
| Note 2 | No backslot | | |
| Prop 65 | ⚠ WARNING This product can expose you to the chemical Nickel (metallic), known to the State of California to cause cancer. For more information go to www.P65Warnings.ca.gov . | | |

Installation Instructions

1. Use the MCL-48-ST one-piece shaft collar as it is received.
2. Wipe the bore clean.
3. Apply a thin coat of light oil to the shaft.
4. Place the collar onto the desired shaft location with the groove side as the work surface. Tighten the collar using a 6.0 mm hex wrench until a slight resistance is felt.
5. Wring collar into its final position and tighten the screw to the full recommended seating torque of 23 Nm using a 6.0 mm torque wrench.