

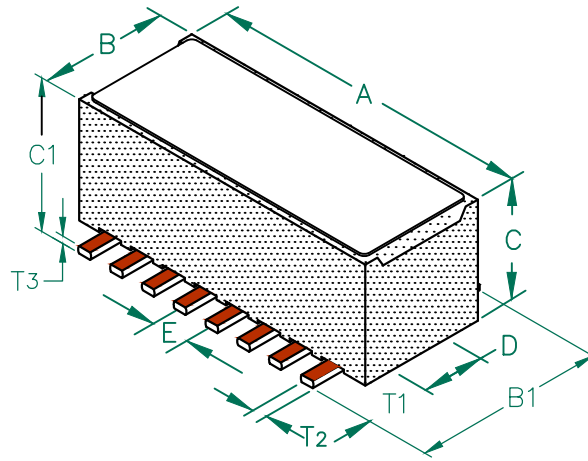
# 29F0818-1SR-10

## PHYSICAL DIMENSIONS:

A	11.43 [.450]	+ 0.18 [.007]
B	4.50 [.177]	+ 0.08 [.003] - 0.10 [.004]
B1	7.04 [.277]	+ MAX
C	4.19 [.165]	+ 0.10 [.004]
C1	4.83 [.190]	+ MAX
D	2.24 [.088]	+ 0.08 [.003]
E	1.27 [.050]	+ 0.13 [.005]

## PHYSICAL DIMENSIONS:

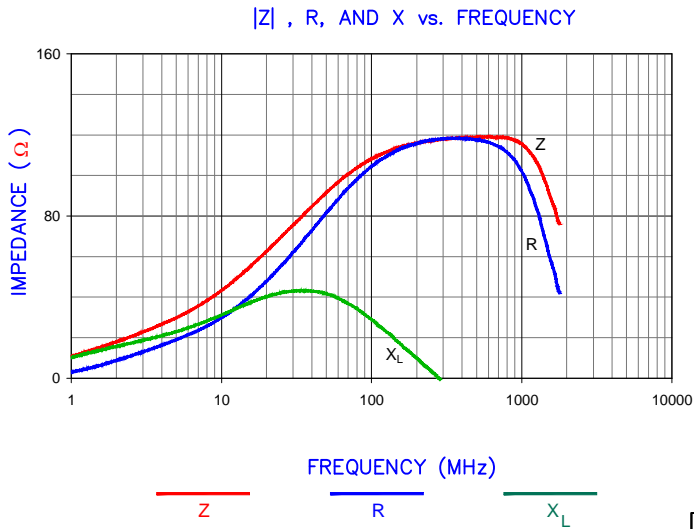
T1	2.16 [.085]	+ 0.25 [.010]
T2	0.50 [.020]	+ TYP.
T3	0.25 [.010]	+ TYP.



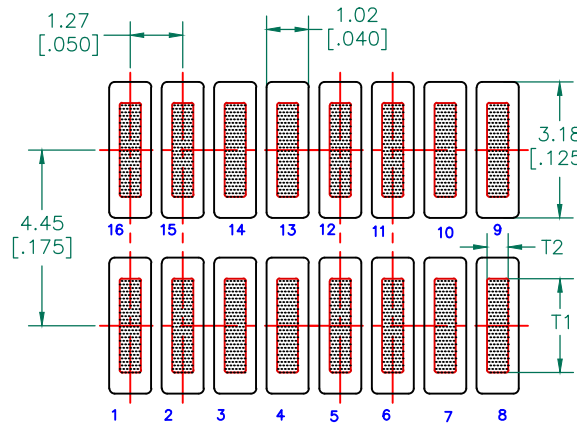
ELECTRICAL CHARACTERISTICS:		
Z @ 100MHz ( $\Omega$ )	DCR ( $\Omega$ )	Rated Current
Nominal	119	
Minimum	90	
Maximum	149	0.01 6,000 mA

NOTES: UNLESS OTHERWISE SPECIFIED

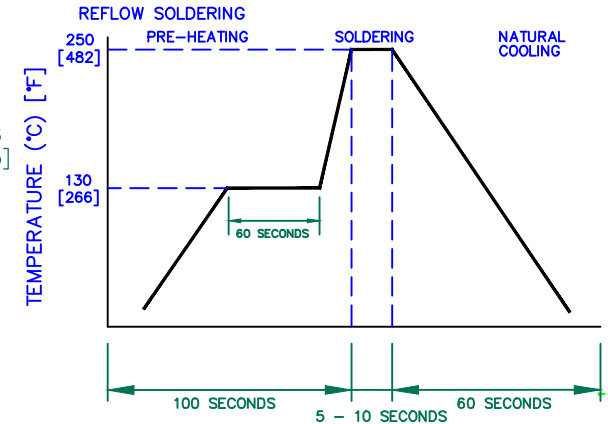
1. TAPED AND REELED per CURRENT EIA SPECIFICATIONS 13" REELS, 900 PCS/REEL.
2. COMPONENTS SHOULD BE ADEQUATELY PREHEATED BEFORE SOLDERING.
3. REF. CARRIER TAPE SPECIFICATION # CART 818-13.
4. TERMINATION FINISH IS 100% TIN.
5. OPERATION TEMPERATURE (INCLUDING SELF-HEATING): -40 ~ +125°C.



## LAND PATTERNS FOR REFLOW SOLDERING



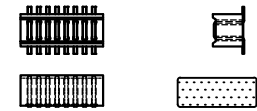
## RECOMMENDED SOLDERING CONDITIONS



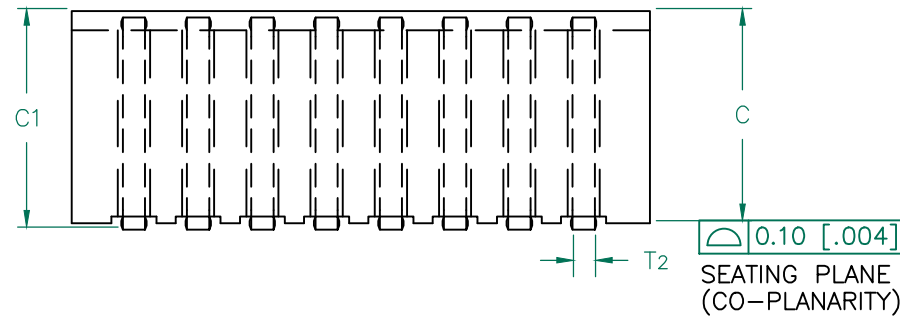
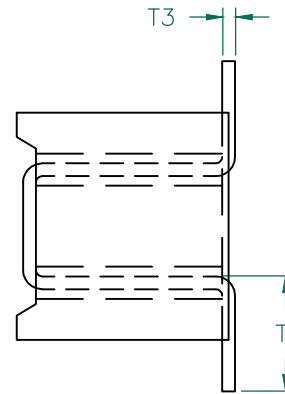
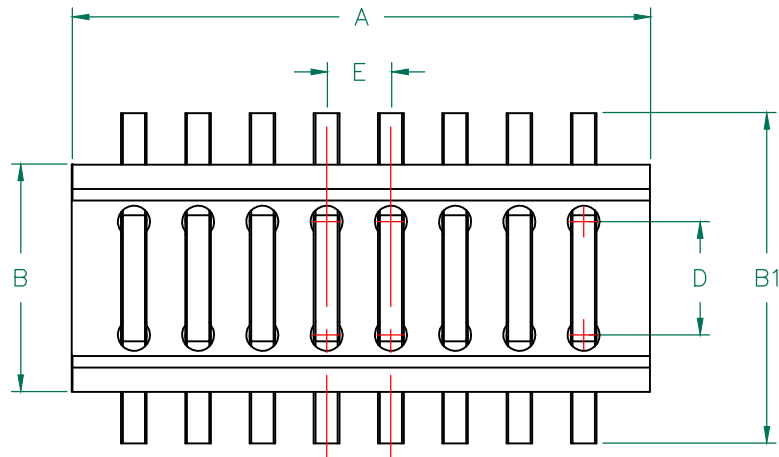
DIMENSIONS ARE IN mm [INCHES]				This print is the property of Laird Tech. and is loaned in confidence subject to return upon request and with the understanding that no copies shall be made without the written consent of Laird Tech. All rights to design or invention are reserved.		
F	ADD NOTE 5	08/30/12	QU			
E	UPDATE COMPANY LOGO	10/22/08	JRK			
D	UPDATE COMPANY LOGO	05/04/07	JRK			
C	CHG TOLS ON E DIMS CORRECT T2 DIMS IN LANDPATTERN	03/21/07	JRK			
B	COR REV BLOCK mm [INCHES] ADD ROHS	10/19/06	JRK			
A	ORIGINAL DRAFT	04/30/04	JRK	PROJECT/PART NUMBER: <b>29F0818-1SR-10</b>	REV <b>F</b>	DRAWN BY: JRK
REV	DESCRIPTION	DATE	INT	DATE: 04/30/04 CAD # 29F0818-1SR-10-F-1	SCALE: NTS TOOL # H0818	SHEET: 1 of 2



SCALE DRAWING 1:1

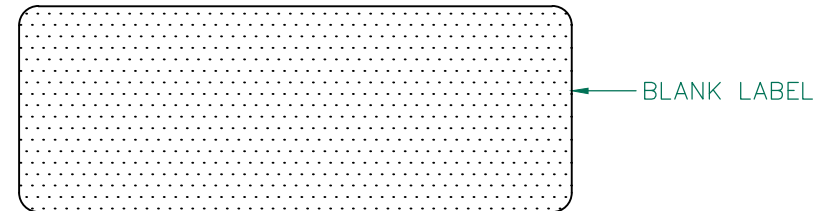


29F0818-1SR-10



ELECTRICAL TESTING

TEST:	Z	Z
# TURNS	1	1
AWG	22	22
FREQUENCY	25 MHz	100 MHz
NOMINAL	71 Ω	119 Ω
MINIMUM	- Ω	90 Ω
MAXIMUM	- Ω	149 Ω
WEIGHT/1000	0.88 kgs.	1.95 lbs.



NOTES: UNLESS OTHERWISE SPECIFIED

1. WIRE: REFERENCE STEWARD WIRE PURCHASE SPEC. W0818-1.
2. IMPEDANCE VALUES ARE GROSS, MEASURED USING W0818-1 WIRE PLACED IN EITHER END HOLE w/ NO D.C. BIAS.
3. REFERENCE STEWARD CORE P/N 29H0818-\*00.
4. NO MORE THAN 0.18 [.007] DIFFERENCE FROM THE LONGEST TO THE SHORTEST CONDUCTOR ON ONE SIDE.
5. TERMINATION FINISH IS 100% TIN.

DIMENSIONS:

A	11.43 [.450]	+	0.18 [.007]
			+ 0.08 [.003]
B	4.50 [.177]	-	0.10 [.004]
B1	7.04 [.277]	+	MAX
C	4.19 [.165]	+	0.10 [.004]
C1	4.83 [.190]	+	MAX
D	2.24 [.088]	+	0.08 [.003]
E	1.27 [.050]	+	0.13 [.005]

WIRE DIMENSIONS:

T <sub>1</sub>	2.16 [.085]	±	0.25 [.010]
T <sub>2</sub>	0.50 [.020]	+	TYP.
T <sub>3</sub>	0.25 [.010]	+	TYP.

RoHS

DIMENSIONS ARE IN mm [INCHES].				This print is the property of Laird Tech. and is loaned in confidence subject to return upon request and with the understanding that no copies shall be made without the written consent of Laird Tech. All rights to design or invention are reserved.		Laird	
F	ADD NOTE 5	08/30/12	QIU	PROJECT/PART NUMBER:		REV	DRAWN BY:
E	UPDATE COMPANY LOGO	10/22/08	JRK	29F0818-1SR-10		F	JRK
D	UPDATE COMPANY LOGO	05/04/07	JRK	DATE:	04/30/04	SCALE:	NTS
C	CHG TOLS ON E DIMS CORRECT T2 DIMS IN LANDPATTERN	03/21/07	JRK	CAD #	29F0818-1SR-10-F-2	TOOL #	H0818
B	COR REV BLOCK mm [INCHES] ADD ROHS	10/19/06	JRK			SHEET:	
A	ORIGINAL DRAFT	04/30/04	JRK			2 of 2	
REV	DESCRIPTION	DATE	INT				