

# MBT. Diamond cut knurled knobs

Technopolymer

INCH



PP



1



2



3



4



5



6



7



8



9



10



11



12



13



14



15

RH

## MATERIAL

High-resilience polypropylene based (PP) technopolymer, black colour, matte finish.

## COLOURED CENTRE CAP

Technopolymer, matte finish.

To order, add the index of the desired colour (C9, ..., C17) to the code and the description.

On request and for sufficient quantities, it can be supplied in other colours or with customised graphic symbols, marks or writings.

## STANDARD EXECUTIONS

- **MBT-B**: brass boss, threaded blind hole or plain blind hole complete with socket set screw for fitting to shaft.

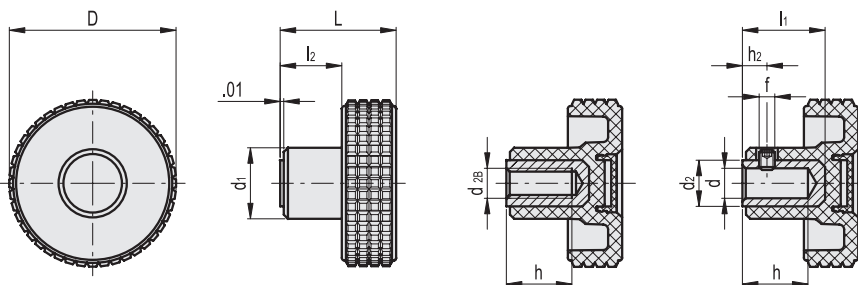
- **MBT-p**: zinc-plated steel threaded stud, chamfered flat end according to ISO 4753 (see Technical Data on page A-11).

## ERGONOMY AND DESIGN

The particular knurling on the outside rim of the knob, provided with a structure of very fine pitch, allows a safe and comfortable grip, offering the operator the possibility of operating under the most different working conditions in a sensitive and ergonomic way and simplifying the adjustment of the knob during rapid rotation (or screwing) without any unpleasant angular work for the hand and wrist.



ELESA Original design



\* Complete with colour index, example: 934206-C2 MBT.30 B-1/4-20-C2

C9 RAL9005  
 C2 RAL2004  
 C3 RAL7035  
 C4 RAL1021  
 C5 RAL5024  
 C6 RAL3000  
 C17 RAL6017

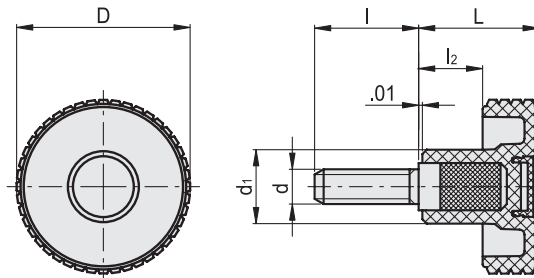
INCH

## MBT-B

Code	Description	D	d	d28	L	d1	d2	l1	l2	h	h2	f	
934206*	MBT.30 B-1/4-20*	1.22	-	1/4-20	0.94	0.59	-	-	0.45	0.47	-	-	0.04
934316*	MBT.40 B-1/4-*	1.57	0.250	-	1.04	0.67	0.47	0.67	0.49	0.55	0.2	10-32	0.06
934321*	MBT.40 B-1/4-20*	1.57	-	1/4-20	1.04	0.67	-	-	0.49	0.47	-	-	0.05
934326*	MBT.40 B-5/16-18*	1.57	-	5/16-18	1.04	0.67	-	-	0.49	0.51	-	-	0.05
934416*	MBT.50 B-3/8-*	1.97	0.375	-	1.3	0.79	0.59	0.98	0.63	0.79	0.24	10-32	0.1
934421*	MBT.50 B-5/16-18*	1.97	-	5/16-18	1.3	0.79	-	-	0.63	0.79	-	-	0.07
934426*	MBT.50 B-3/8-16*	1.97	-	3/8-16	1.3	0.79	-	-	0.63	0.71	-	-	0.07
934506*	MBT.60 B-3/8-*	2.36	0.375	-	1.54	0.91	0.63	1.18	0.73	0.98	0.31	1/4-20	0.15
934511*	MBT.60 B-3/8-16*	2.36	-	3/8-16	1.54	0.91	-	-	0.73	0.79	-	-	0.11
934516*	MBT.60 B-1/2-13*	2.36	-	1/2-13	1.54	0.91	-	-	0.73	0.79	-	-	0.13

Clamping knobs

84



\* Complete with colour index, example: 934261-C2 MBT.30 p-1/4-20x1/2-C2

C9 RAL9005
  C2 RAL2004
  C3 RAL7035
  C4 RAL1021
  C5 RAL5024
  C6 RAL3000
  C17 RAL6017

MBT-p

INCH

Code	Description	D	d2A	L	d1	l	l2	⚖
934261-*	MBT.30 p-1/4-20x1/2-*	1.22	1/4-20	0.94	0.59	0.500	0.45	0.03
934266-*	MBT.30 p-1/4-20x3/4-*	1.22	1/4-20	0.94	0.59	0.750	0.45	0.04
934346-*	MBT.40 p-1/4-20x3/4-*	1.56	1/4-20	1.04	0.67	0.750	0.49	0.04
934361-*	MBT.40 p-1/4-20x1-*	1.56	1/4-20	1.04	0.67	1.000	0.49	0.05
934381-*	MBT.40 p-5/16-18x3/4-*	1.56	5/16-18	1.04	0.67	0.750	0.49	0.06
934391-*	MBT.40 p-5/16-18x1-*	1.56	5/16-18	1.04	0.67	1.000	0.49	0.06
934441-*	MBT.50 p-5/16-18x3/4-*	1.97	5/16-18	1.3	0.79	0.750	0.63	0.08
934446-*	MBT.50 p-5/16-18x1-*	1.97	5/16-18	1.3	0.79	1.000	0.63	0.09
934451-*	MBT.50 p-3/8-16x1-*	1.97	3/8-16	1.3	0.79	1.000	0.63	0.09
934456-*	MBT.50 p-3/8-16x1¼-*	1.97	3/8-16	1.3	0.79	1.250	0.63	0.1
934521-*	MBT.60 p-3/8-16x1-*	2.4	3/8-16	1.54	0.91	1.000	0.73	0.13
934526-*	MBT.60 p-3/8-16x1¼-*	2.4	3/8-16	1.54	0.91	1.250	0.73	0.14

