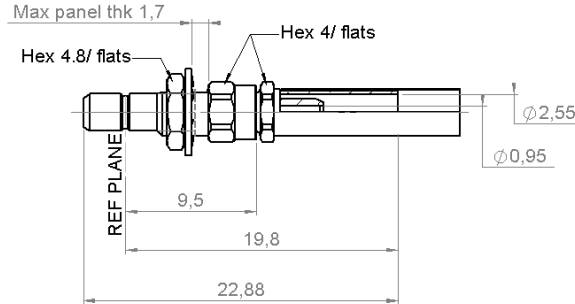


**STRAIGHT BULKHEAD JACK**  
**CRIMP TYPE -CABLE 2/50**

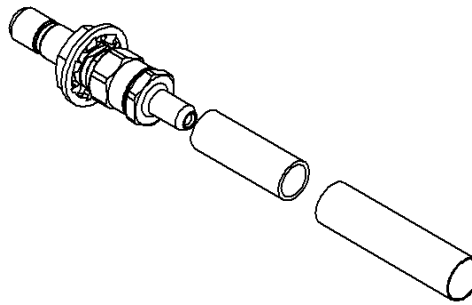
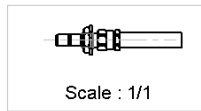
**R203.313.000**

Series : SSMB

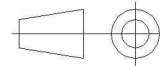


**PANEL CUT OUT**

	mm	
	Maxi	mini
A	3.60	3.50
B	3.30	3.20



All dimensions are in mm.



COMPONENTS	MATERIALS	PLATINGS (µm)
<b>BODY</b>	<b>BRASS</b>	<b>GOLD 0.5 OVER NICKEL 2</b>
<b>CENTER CONTACT</b>	<b>BERYLLIUM COPPER</b>	<b>GOLD 1.3 OVER NICKEL2</b>
<b>OUTER CONTACT</b>	-	-
<b>INSULATOR</b>	<b>PTFE</b>	-
<b>GASKET</b>	-	-
<b>OTHERS PARTS</b>	<b>BRASS</b>	<b>GOLD 0.2 OVER NICKEL 2</b>
-	-	-
-	-	-

Issue : 1214 C

In the effort to improve our products, we reserve the right to make changes judged to be necessary.



**STRAIGHT BULKHEAD JACK**

**R203.313.000**

**CRIMP TYPE -CABLE 2/50**

Series : **SSMB**

**PACKAGING**

**SPECIFICATION**

Standard	Unit	Other
<b>1001</b>	-	<b>Contact us</b>

**CABLE ASSEMBLY**

**ELECTRICAL CHARACTERISTICS**

Stripping	a	b	c	d	e	f
mm	3,50	4,00	12,5	0,00	8,50	0,00

Impedance	<b>50</b>	$\Omega$
Frequency	<b>0-4</b>	GHz
VSWR	<b>1.25 + 0,0200</b>	x F(GHz) Maxi
Insertion loss	<b>0.30</b>	$\sqrt{F}$ (GHz) dB Maxi
RF leakage	- ( <b>NA</b> )	- F(GHz) dB mini
Voltage rating	<b>175</b>	Veff Maxi
Dielectric withstanding voltage	<b>500</b>	Veff mini
Insulation resistance	<b>1000</b>	M $\Omega$ mini

Assembly instruction :

Recommended cable(s)  
 RG 178  
 KX 21  
 RG 196  
 RG 178 LC

Cable retention

- pull off **54** N mini  
 - torque **NA** N.cm

**MECHANICAL CHARACTERISTICS**

**TOOLING**

Center contact retention		
Axial force – Mating end	<b>8</b>	N mini
Axial force – Opposite end	<b>8</b>	N mini
Torque	<b>NA</b>	N.cm mini

Part Number	Description	Hexagon
.	.	.
R282.293.000	CRIMPING TOOL M22520/5-01	-
R282.235.003	CRIMPING DIES M22520/5-03	2.67
R282.211.000	CRIMPING TOOL	2.67

Recommended torque		
Mating	<b>NA</b>	N.cm
Panel nut	<b>25</b>	N.cm
Clamp nut	<b>NA</b>	N.cm
A/F clamp nut	<b>0,0000</b>	mm

**OTHERS CHARACTERISTICS**

Mating life	<b>500</b>	Cycles mini
Weight	<b>0,0000</b>	g

**ENVIRONMENTAL**

Operating temperature	<b>-65/+165</b>	$^{\circ}$ C
Hermetic seal	<b>NA</b>	Atm.cm3/s
Panel leakage	<b>NA</b>	

Issue : 1214 C

In the effort to improve our products, we reserve the right to make changes judged to be necessary.



**RADIALL**®

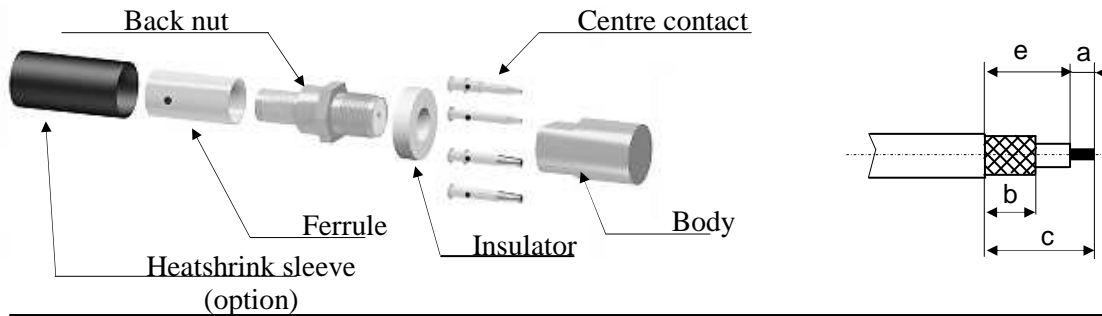
**STRAIGHT BULKHEAD JACK**

**R203.313.000**

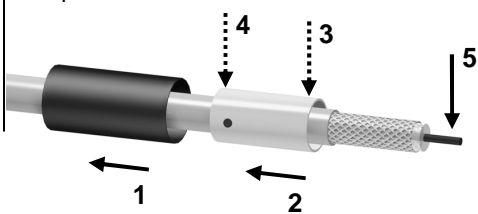
**CRIMP TYPE -CABLE 2/50**

Series : **SSMB**

COMPONENTS



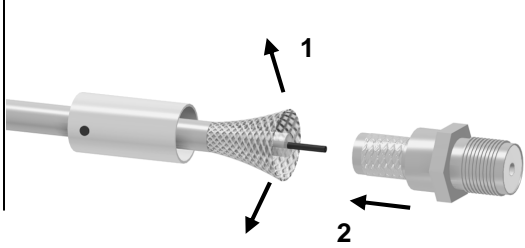
**1**  
Slide the heatshrink sleeve onto the cable (Option).  
Slide the ferrule onto the cable.  
Position the ferrule's hole at the front if soldering.  
Position the ferrule's hole at the back if crimping.  
Strip the cable.



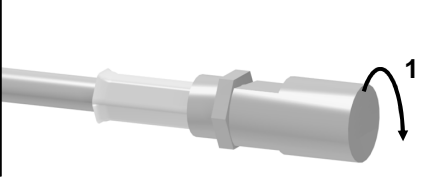
**4**  
Slide the centre contact on until it bottoms against the insulator back nut.  
Solder or crimp the contact ( see connector TDS ).



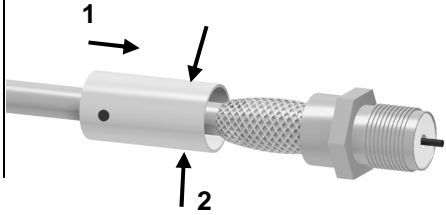
**2**  
Fan the braid.  
Slide the cable into the back nut.



**5**  
Screw the back nut into the connector body with the adapted wrench.  
Recommended coupling torque 170 N cm.



**3**  
Slide the ferrule over the braid.  
Crimp the ferrule with crimping tool ( see connector TDS ).



**6**  
Slide the sleeve over the ferrule and heatshrink it in place (option).

