

DAISY-7X1-WAS

Asymmetric beam for wall-washing

SPECIFICATION:

Dimensions	279.4 x 40.0 mm
Height	27 mm
Fastening	clips
ROHS compliant	yes ⓘ

MATERIALS:

Component	Type	Material	Colour	Finish
C17391_DAISY-7X1-WAS	Linear lens	PMMA	clear	
C17727_DAISY-7X1-WAS-COVER-WHT	Accessory	PC	white	
C17393_DAISY-7X1-WAS-COVER	Accessory	PC	black	matt
C18281_DAISY-7X1-WAS-SHD	Shade	PC	metal	gloss

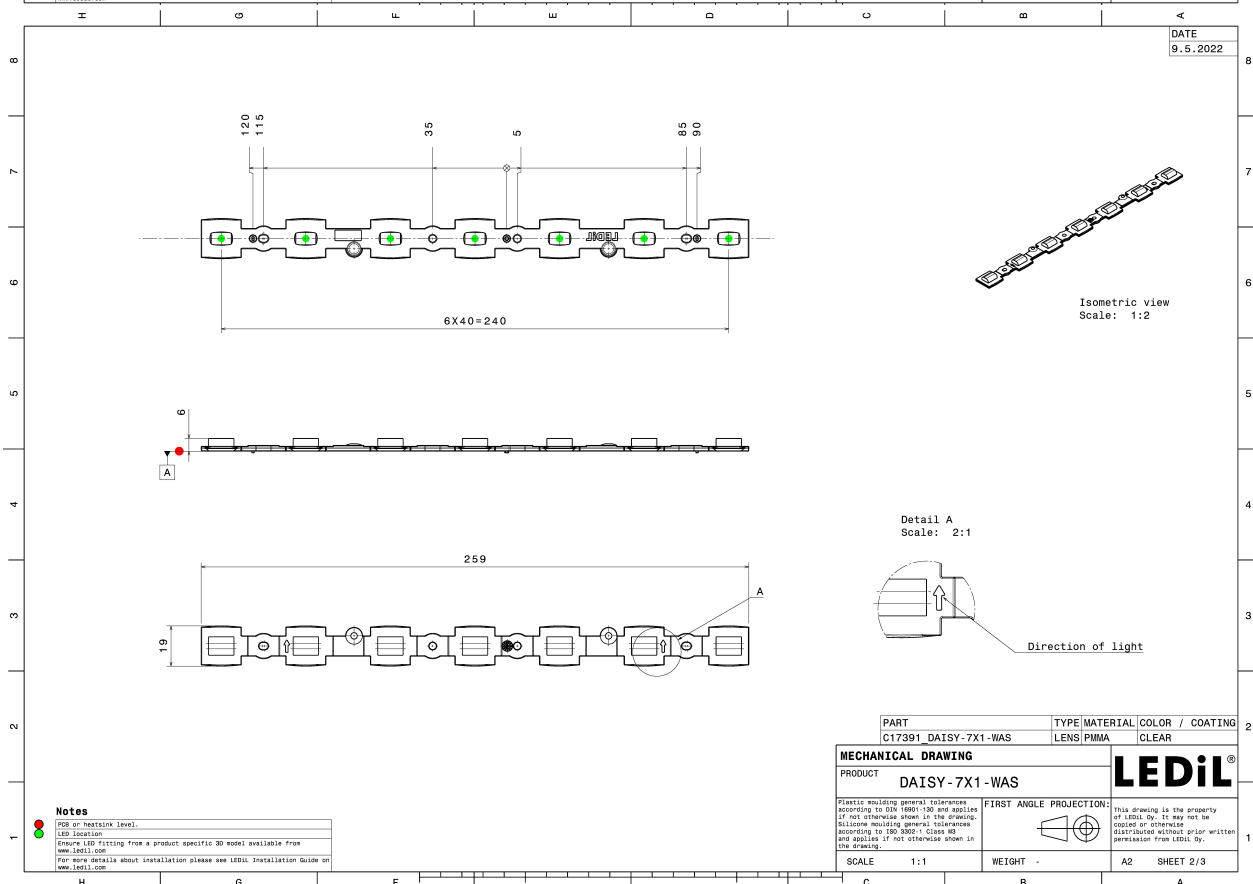
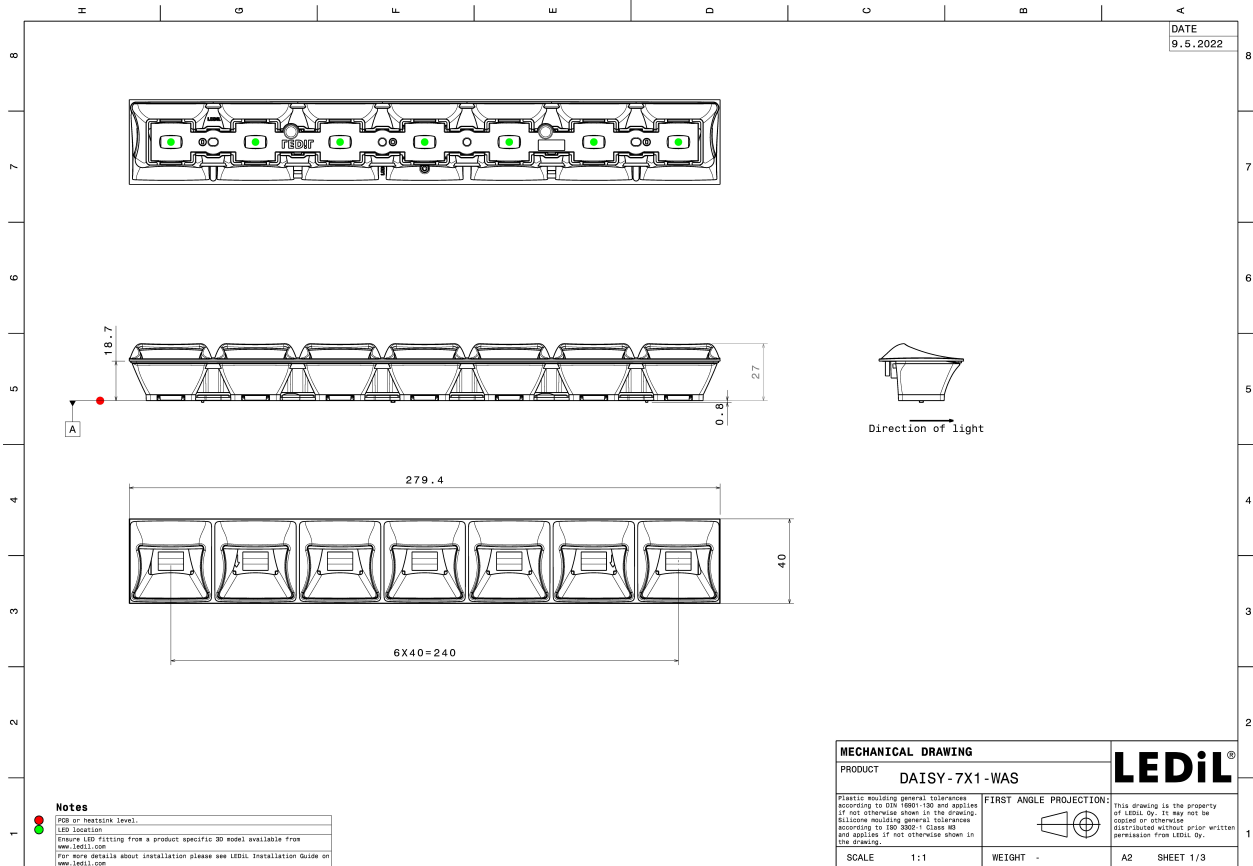
ORDERING INFORMATION:

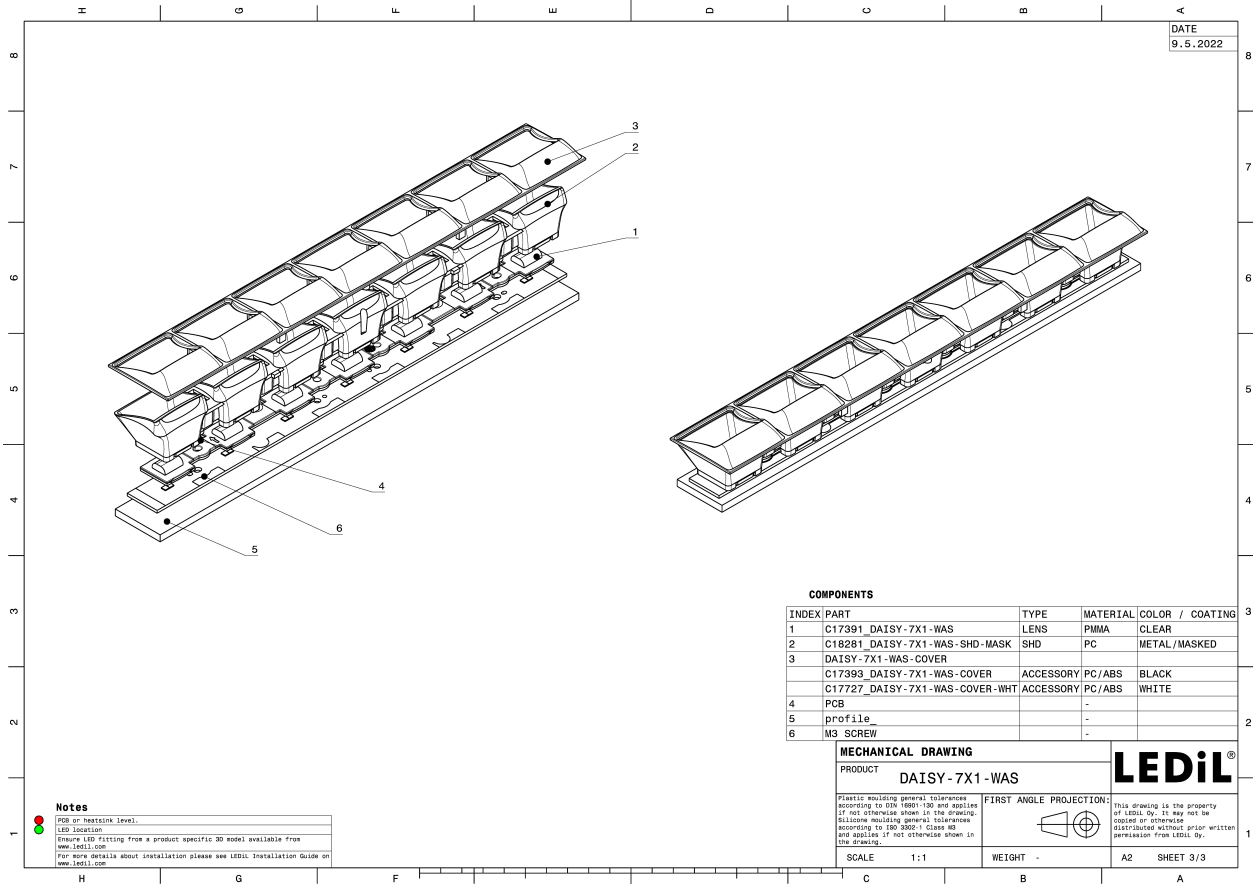
Quantities for one set:

Linear lens	1
Shade	1
Accessory	1




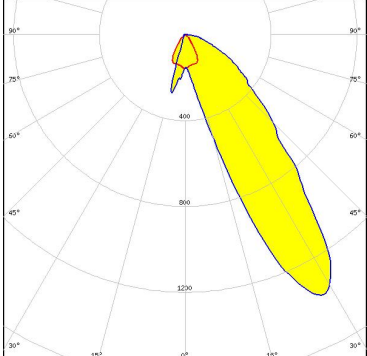

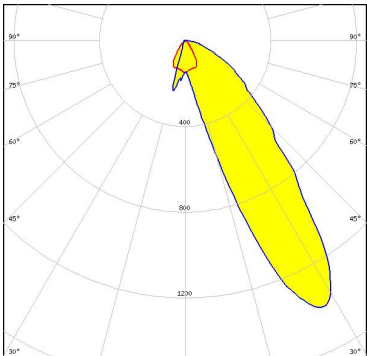

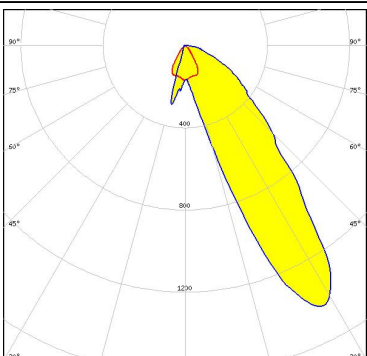

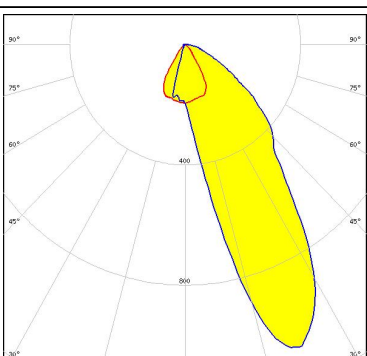
Component		Qty in box	MOQ	MPQ	Box weight (kg)
C17391_DAISY-7X1-WAS » Box size: 400 x 300 x 300 mm	Linear lens	312	156	156	5.4
C18281_DAISY-7X1-WAS-SHD » Box size: 595 x 360 x 250 mm	Shade	156	156	156	8.4
C17393_DAISY-7X1-WAS-COVER » Box size: 595 x 360 x 250 mm	Accessory	156	156	156	4.9
C17727_DAISY-7X1-WAS-COVER-WHT » Box size: 595 x 360 x 250 mm	Accessory	156	156	156	5.1





See also our general installation guide: www.ledil.com/installation_guide

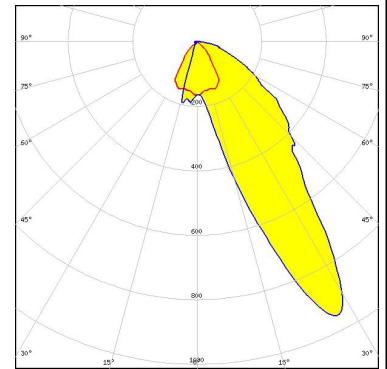
OPTICAL RESULTS (MEASURED):

 <p> LED LED Line SMD L28W2 TW Module 20mm 2800Lm Daisy 7x1 (E21A) FWHM / FWTM Asymmetric Efficiency 74 % Peak intensity 1.4 cd/lm LEDs/each optic 2 Light colour Tunable White Required components: C17393_DAISY-7X1-WAS-COVER </p>	
 <p> LED LED Line SMD L28W2 White Module 20mm 2800Lm Daisy 7x1 (E21A) FWHM / FWTM Asymmetric Efficiency 74 % Peak intensity 1.4 cd/lm LEDs/each optic 2 Light colour White Required components: C17393_DAISY-7X1-WAS-COVER </p>	
 <p> LED LUXEON HL2Z FWHM / FWTM Asymmetric Efficiency 76 % Peak intensity 1.4 cd/lm LEDs/each optic 2 Light colour White Required components: C17393_DAISY-7X1-WAS-COVER </p>	
 <p> LED LinLED 280x28mm 1600lm 840 4C 21V DAISY 7x1(ZT25) FWHM / FWTM Asymmetric Efficiency 78 % Peak intensity 1.1 cd/lm LEDs/each optic 1 Light colour White Required components: C17393_DAISY-7X1-WAS-COVER </p>	

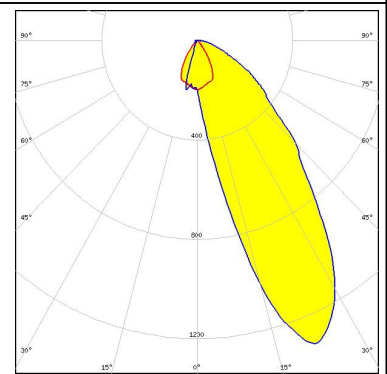
OPTICAL RESULTS (MEASURED):



LED NCSxE17A
FWHM / FWTM Asymmetric
Efficiency 74 %
Peak intensity 1.2 cd/lm
LEDs/each optic 1
Light colour White
Required components:
C17393_DAISY-7X1-WAS-COVER



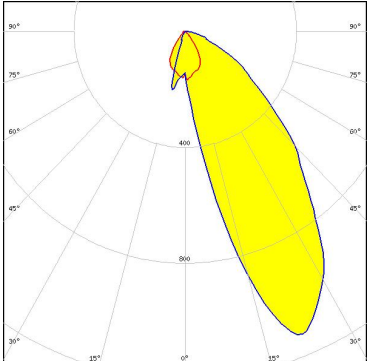
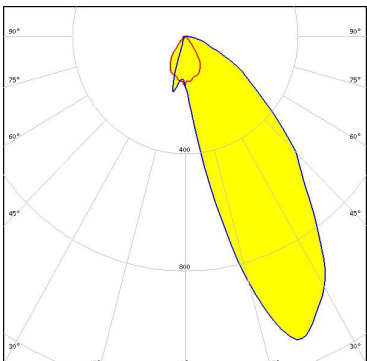
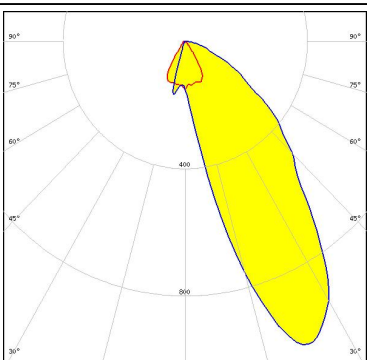
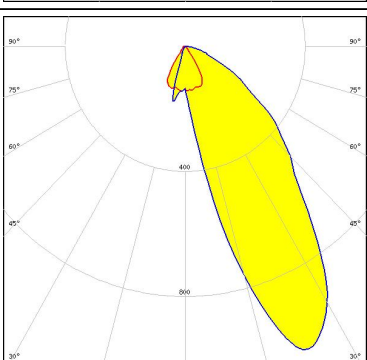
LED LH231B
FWHM / FWTM Asymmetric
Efficiency 79 %
Peak intensity 1.3 cd/lm
LEDs/each optic 1
Light colour White
Required components:
C17393_DAISY-7X1-WAS-COVER



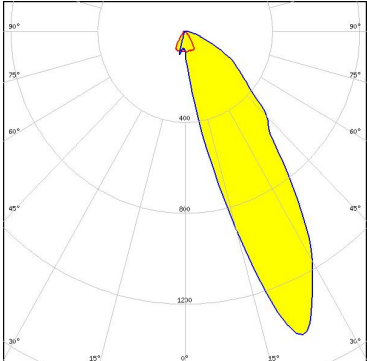
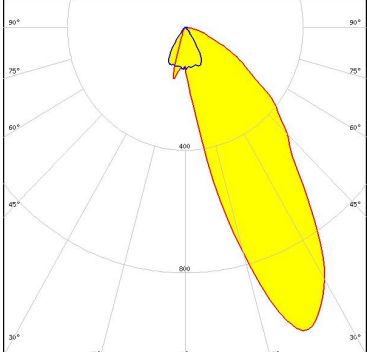
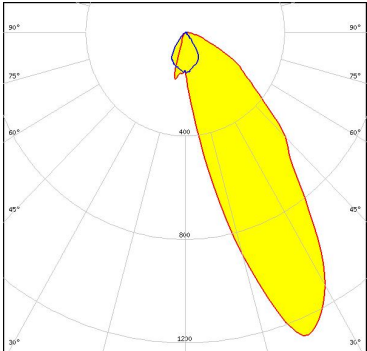
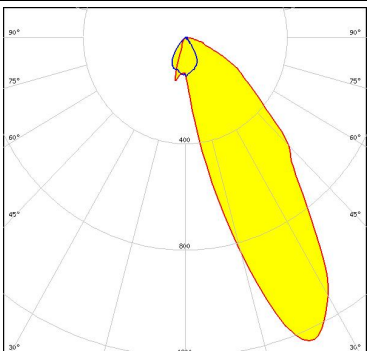
OPTICAL RESULTS (SIMULATED):

<p>NICHIA</p> <p>LED: NCSxE17A FWHM / FWTM: Asymmetric Efficiency: 71 % Peak intensity: 1.5 cd/lm LEDs/each optic: 2 Light colour: White Required components: C17393_DAISY-7X1-WAS-COVER</p>	
<p>NICHIA</p> <p>LED: NCSxE17A FWHM / FWTM: Asymmetric Efficiency: 73 % Peak intensity: 1.5 cd/lm LEDs/each optic: 2 Light colour: White Required components: C17393_DAISY-7X1-WAS-COVER</p>	
<p>NICHIA</p> <p>LED: NCSxE17A FWHM / FWTM: Asymmetric Efficiency: 70 % Peak intensity: 1.2 cd/lm LEDs/each optic: 1 Light colour: White Required components: C17727_DAISY-7X1-WAS-COVER-WHT</p>	
<p>NICHIA</p> <p>LED: NCSxE17A FWHM / FWTM: Asymmetric Efficiency: 73 % Peak intensity: 1.5 cd/lm LEDs/each optic: 2 Light colour: White Required components: C17727_DAISY-7X1-WAS-COVER-WHT</p>	

OPTICAL RESULTS (SIMULATED):

<p>NICHIA</p> <p>LED NF2W757G-MT (Tunable White) FWHM / FWTM Asymmetric Efficiency 73 % Peak intensity 1.1 cd/lm LEDs/each optic 2 Light colour Tunable White Required components: C17727_DAISSY-7X1-WAS-COVER-WHT</p>	
<p>NICHIA</p> <p>LED NF2W757G-MT (Tunable White) FWHM / FWTM Asymmetric Efficiency 72 % Peak intensity 1.1 cd/lm LEDs/each optic 2 Light colour Tunable White Required components: C17393_DAISSY-7X1-WAS-COVER</p>	
<p>NICHIA</p> <p>LED NF2x757G FWHM / FWTM Asymmetric Efficiency 73 % Peak intensity 1.1 cd/lm LEDs/each optic 1 Light colour White Required components: C17393_DAISSY-7X1-WAS-COVER</p>	
<p>NICHIA</p> <p>LED NF2x757G FWHM / FWTM Asymmetric Efficiency 73 % Peak intensity 1.1 cd/lm LEDs/each optic 1 Light colour White Required components: C17727_DAISSY-7X1-WAS-COVER-WHT</p>	

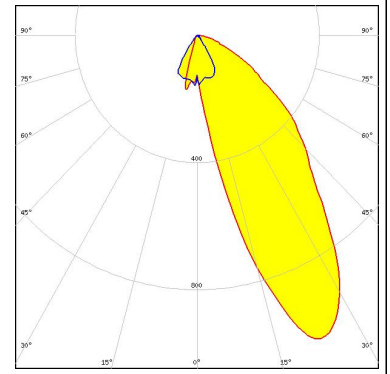
OPTICAL RESULTS (SIMULATED):

<p>NICHIA</p> <p>LED: NVSxE21A FWHM / FWTM: Asymmetric Efficiency: 72 % Peak intensity: 1.4 cd/lm LEDs/each optic: 2 Light colour: White Required components: C17393_DAISY-7X1-WAS-COVER</p>	
<p>SAMSUNG</p> <p>LED: LM28xB Series FWHM / FWTM: Asymmetric Efficiency: 73 % Peak intensity: 1.1 cd/lm LEDs/each optic: 1 Light colour: White Required components: C17393_DAISY-7X1-WAS-COVER</p>	
<p>SAMSUNG</p> <p>LED: LM28xB Series FWHM / FWTM: Asymmetric Efficiency: 74 % Peak intensity: 1.3 cd/lm LEDs/each optic: 2 Light colour: White Required components: C17393_DAISY-7X1-WAS-COVER</p>	
<p>SAMSUNG</p> <p>LED: LM301B FWHM / FWTM: Asymmetric Efficiency: 73 % Peak intensity: 1.2 cd/lm LEDs/each optic: 1 Light colour: White Required components: C17393_DAISY-7X1-WAS-COVER</p>	

OPTICAL RESULTS (SIMULATED):

SAMSUNG

LED	LM301B
FWHM / FWTM	Asymmetric
Efficiency	74 %
Peak intensity	1.1 cd/lm
LEDs/each optic	1
Light colour	White
Required components:	
	C17393_DAISY-7X1-WAS-COVER



GENERAL INFORMATION:

NOTE: The typical beam angle will be changed by different color, chip size and chip position tolerance. The typical total beam angle is the full angle measured where the luminous intensity is half of the peak value.

MATERIALS:

As part of our continuous research and improvement processes, and to ensure the best possible quality and availability of our products, LEDiL reserves the right to change material grades without notice.

PRODUCT DATA USER AGREEMENT AND DISCLAIMER:

The measured data in the provided downloadable LEDiL Product Datasheets and Mechanical 2D-Drawings is rounded and provided as reference for planning. LEDiL Oy's optical specifications have been verified by conducting performance testing of the products in accordance with the company's quality system. The reported data are averaged results of multiple measurements with typical variation. LEDiL Oy reserves the right to without prior notification make changes and improvements to its products.

LEDiL Oy assumes neither warranty, nor guarantee nor any other liability of any kind for the contents and correctness of the provided data. The provided data has been generated with highest diligence but the provided data may in reality not represent the complete possible variation range of all intrinsic parameters. Therefore, in certain cases a deviation from the provided data could occur.

LEDiL Oy reserves the right to undertake technical changes of its products without further notification which could lead to changes in the provided data. LEDiL Oy assumes no liability of any kind for the possible deviation from any provided data or any other damage resulting from the usage of the provided data.

The user agrees to this disclaimer and user agreement with the download or usage of the provided files.

LEDiL Oy

Joensuunkatu 13
FI-24240 SALO
Finland

LEDiL Inc.

228 West Page Street
Suite D
Sycamore IL 60178
USA

Ledil Optics Technology (Shenzhen) Co., Ltd.

405 , Block B
Casic Motor Building
Shenzhen 518057
P.R.CHINA

Local sales and technical support

[www.ledil.com/
where_to_buy](http://www.ledil.com/where_to_buy)

Shipping locations

Salo, Finland
Hong Kong, China

Distribution Partners

[www.ledil.com/
where_to_buy](http://www.ledil.com/where_to_buy)