

# SURFBOARDS®



THE BREADBOARDING MEDIUM FOR SURFACE MOUNT™

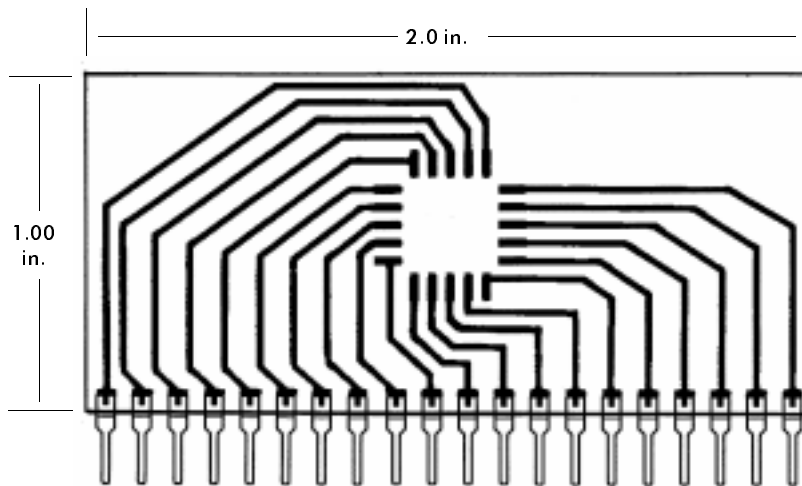
## 9000 SERIES FOR I.C.s

IDS9302A 3-9-99

MODEL **9302**

**ACCEPTS 20 PIN PLCC**

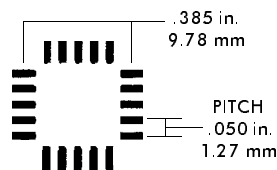
FOR DEVICE EVALUATION, ADAPTATION, AND TEST



SINGLE-IN-LINE (SIP) PINS  
ON .100 in. CENTERS

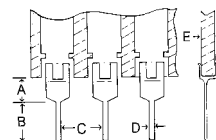
The 9302 provides direct pin out for industry standard 20 pin PLCC devices. Assembly can then be plugged into solderless breadboards and sockets, or may be soldered to conventional breadboards. Use for device evaluation, adaptation, or test.

I.C. FOOTPRINT  
ACCEPTS INDUSTRY STANDARD  
**20 PIN PLCC**



**JUST ADD PARTS  
AND  
PLUG IN™**

### PIN SPECIFICATIONS / TOLERANCES



	In Inches
A=	.062 ± .006
B=	.130 ± .010
C=	.100 ± .005
D=	.020 ± .004
E=	.031 ± .005

### BOARD SPECIFICATIONS

**BOARD MATERIAL:** .031 ± .005 In. Thick G-10 FR-4 Glass Epoxy or equivalent.  
**CIRCUITS:** 1 oz Copper with solder coated pads.  
**TOLERANCES:** Given in inches  
 Board Size ± .020 / OAL ± .040  
 Circuit pattern/position ± .005

Copyright 1997, 1999 by Capital Advanced Technologies, Inc. All rights reserved. Surfboards Are a registered trademark of Capital Advanced technologies, Inc. All other trademarks or registered trademarks are property of their respective owners. Availability, specifications, and prices are subject to change without notice. All information given is believed to be accurate but is not guaranteed. The user of information given or products represented by such information is responsible for determining the suitability of said information or products for a given purpose.

**CAPITAL ADVANCED TECHNOLOGIES, INC.**

CAROL STREAM, ILLINOIS. USA.

PHONE 630-690-1696 WWW.CapitalAdvanced.Com FAX-ON-DEMAND 630-690-2865