

EMI/EMC FILTER

RoHS

DS1 SERIES



Features

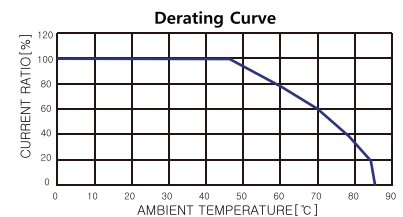
- Good shield effect by using metal case
- Excellent filtering characteristics for both differential mode and common mode
- Epoxy molded for reliability
- Bidirectional structure effective for both noise from externally and internally generated
- Compact and economical

Applications

- Digital equipments
- Battery, ESS equipments
- Measuring instruments
- OA equipments like copy machine
- Mini computers and peripherals
- Banking terminal
- Suitable for FA equipments
- Electric vehicle charger

Specifications

Model	Rated Voltage (AC, DC)	Rated Current	Leakage Current (250V AC)	Operating Temperature
DS1-F03, T03	250V (50/60Hz)	3A	0.5mA max.	-25°C to +85°C Including temperature rise
DS1-F05, T05		5A		
DS1-F08, T08		8A		
DS1-F10, T10		10A		



Note

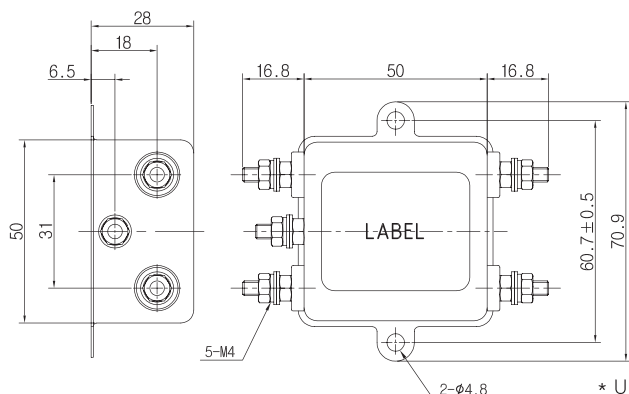
Test Voltage : 1500V AC one minute, line to earth
 Insulation Resistance : 300 Mohm min. at 500V DC
 Voltage Drop : 1V max. at rated current
 Weight : 150g

Model Number Construction

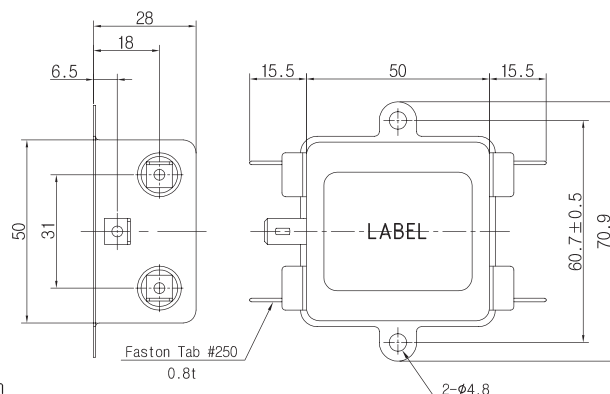
DS1	T	05
Series Description	Input/Output Terminal F : Faston Tab #250 T : M4 Stud	Current Rating : AC rms 03 : 03amp 05 : 05amp 08 : 08amp 10 : 10amp

Shapes and Dimensions

DS1-T**

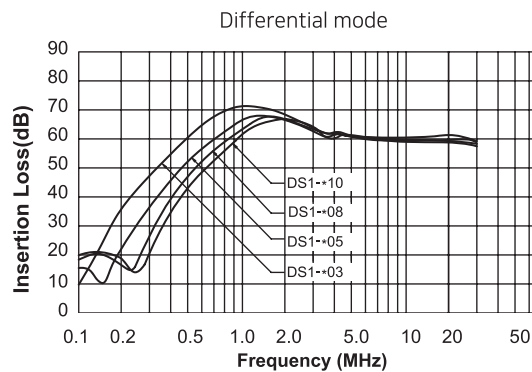
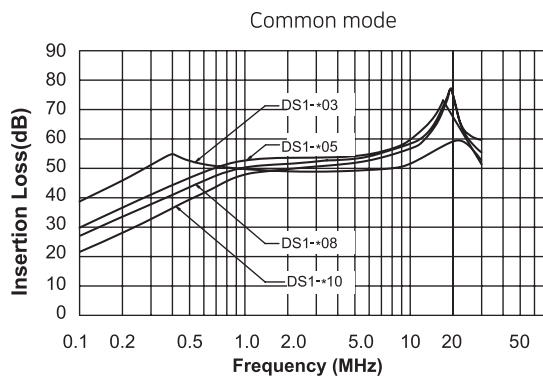


DS1-F**

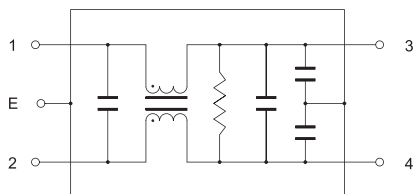


- * Unit : mm
- * General tolerance : ± 1.0
- * Metal Case

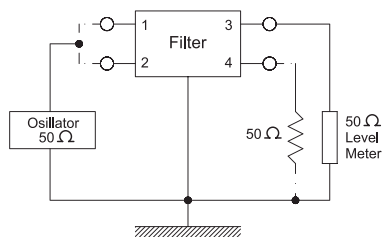
Attenuation Characteristics



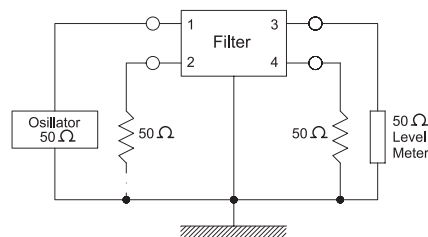
Circuit Diagram



Measurement Configuration



Common mode



Differential mode