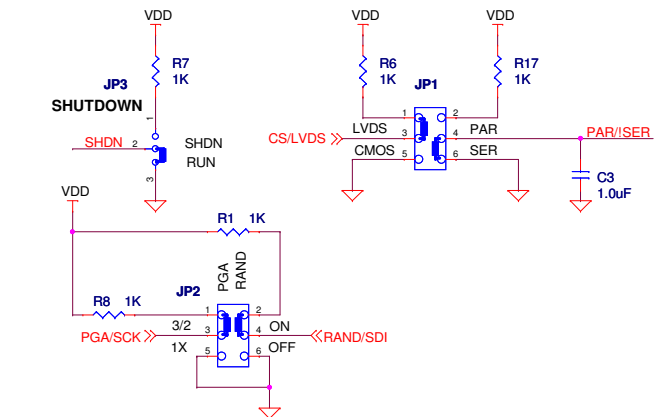
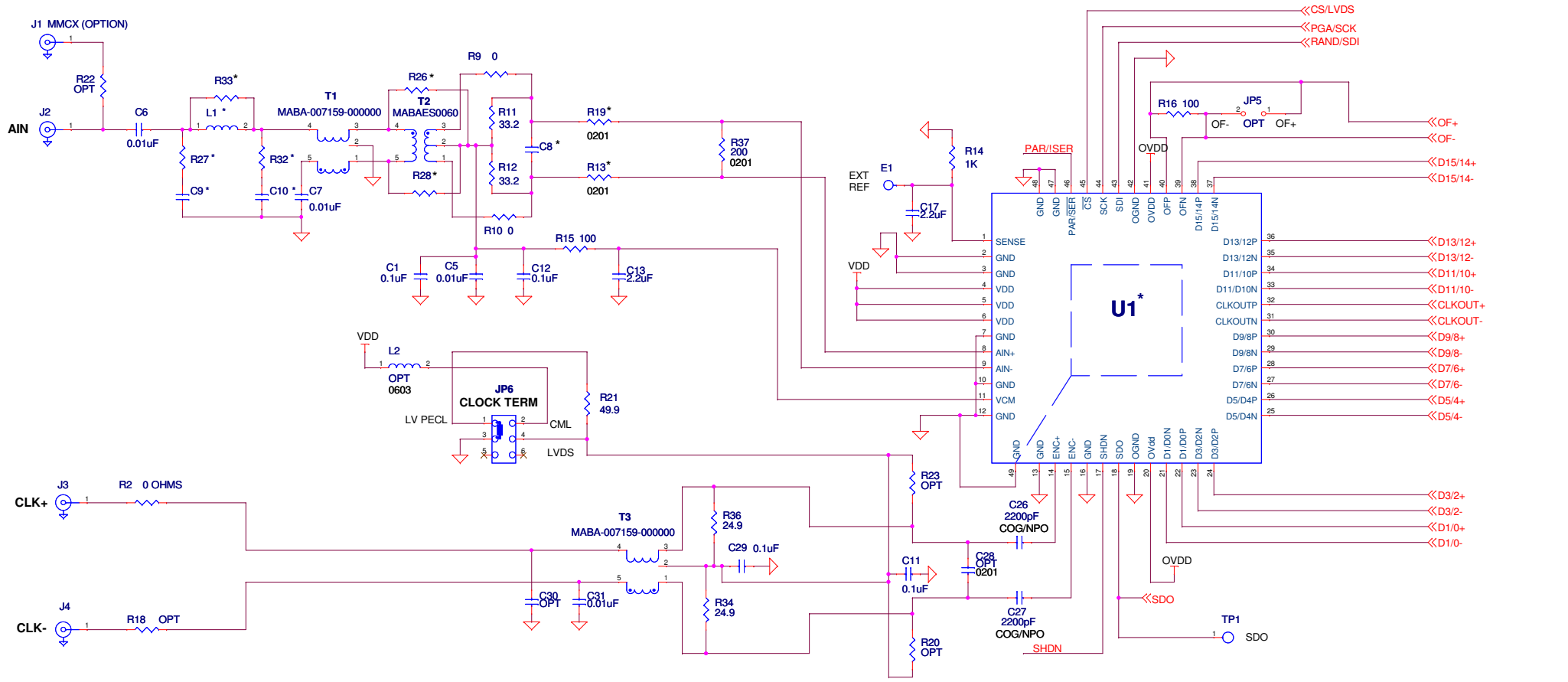
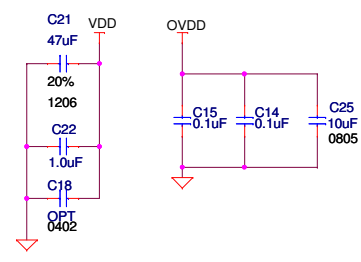


REVISION HISTORY				
ECO	REV	DESCRIPTION	APPROVED	DATE
-	2	PRODUCTION	C.MAYOTT	03-14-14



* ASSEMBLY OPTIONS TABLE

ASSEMBLY TYPE	U1	BITS	Mbps	C8	C9,C10	L1	R27,R32	R33	R26,R28	R19,R13	Fin (MHz)
DC2183A-A	LTC2107IUK	16	210	4.7pF	8.2pF	56nH	86.6	86.6	OPT	15	5< Fin <70
DC2183A-B	LTC2107IUK	16	210	12pF	3.9pF	18nH	43.2	105	68.1	10	70< Fin <180



CUSTOMER NOTICE
 LINEAR TECHNOLOGY HAS MADE A BEST EFFORT TO DESIGN A CIRCUIT THAT MEETS CUSTOMER-SUPPLIED SPECIFICATIONS; HOWEVER, IT REMAINS THE CUSTOMER'S RESPONSIBILITY TO VERIFY PROPER AND RELIABLE OPERATION IN THE ACTUAL APPLICATION. COMPONENT SUBSTITUTION AND PRINTED CIRCUIT BOARD LAYOUT MAY SIGNIFICANTLY AFFECT CIRCUIT PERFORMANCE OR RELIABILITY. CONTACT LINEAR TECHNOLOGY APPLICATIONS ENGINEERING FOR ASSISTANCE.
 THIS CIRCUIT IS PROPRIETARY TO LINEAR TECHNOLOGY AND SUPPLIED FOR USE WITH LINEAR TECHNOLOGY PARTS.

CONTRACT NO.
 APPROVALS
 PCB DES. M.HAWKINS
 ENG. C.MAYOTT

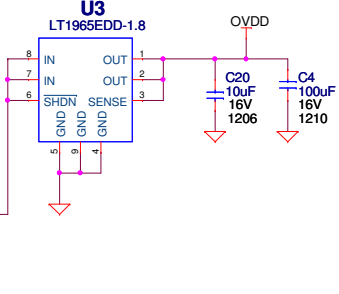
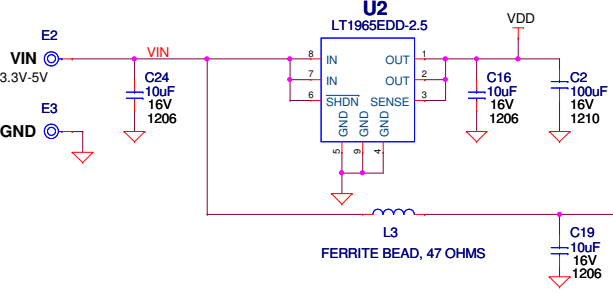
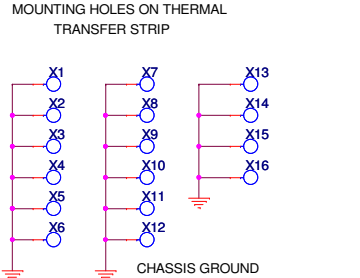
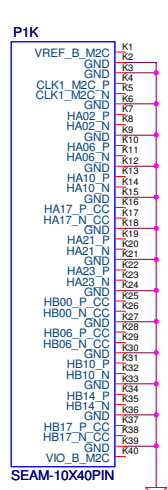
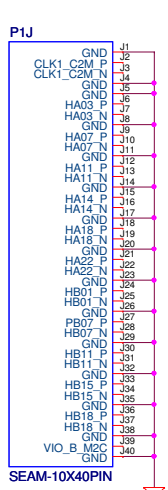
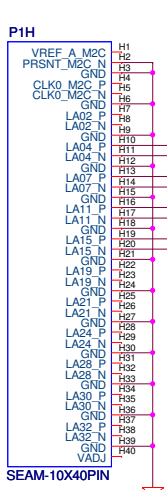
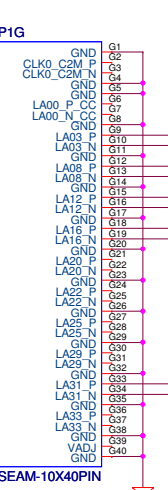
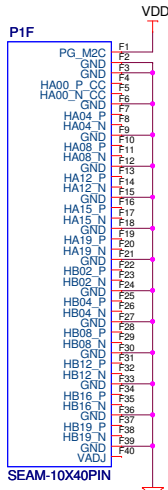
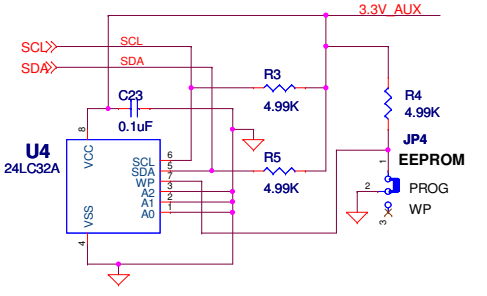
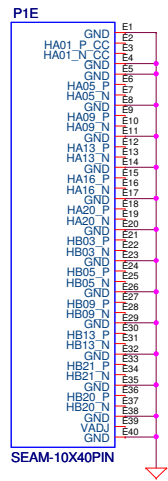
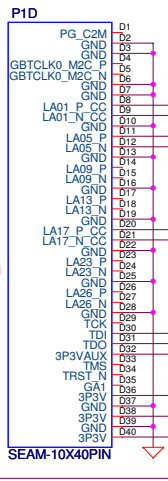
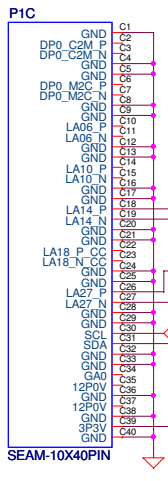
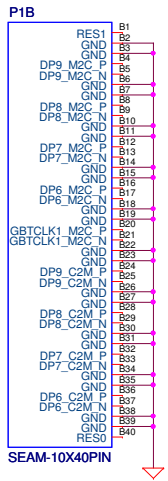
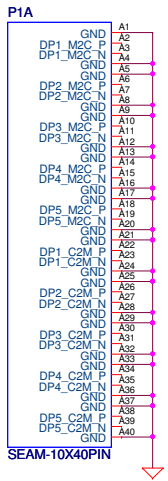
1630 McCarthy Blvd.
 Milpitas, CA 95035
 Phone: (408)432-1900
 Fax: (408)434-0507
 LTC Confidential-For Customer Use Only

LINEAR TECHNOLOGY

TITLE: SCHEMATIC

16-BIT, 210 Mbps ADC

SIZE A	IC NO. LTC2107	REV 2
DATE: 03-18-2014	SHEET 1 OF 2	



CUSTOMER NOTICE		CONTRACT NO.		1630 McCarthy Blvd. Milpitas, CA 95095 Phone: (408)432-1900 Fax: (408)434-0507 LTC Confidential-For Customer Use Only	
LINEAR TECHNOLOGY HAS MADE A BEST EFFORT TO DESIGN A CIRCUIT THAT MEETS CUSTOMER-SUPPLIED SPECIFICATIONS; HOWEVER, IT REMAINS THE CUSTOMER'S RESPONSIBILITY TO VERIFY PROPER AND RELIABLE OPERATION IN THE ACTUAL APPLICATION. COMPONENT SUBSTITUTION AND PRINTED CIRCUIT BOARD LAYOUT MAY SIGNIFICANTLY AFFECT CIRCUIT PERFORMANCE OR RELIABILITY. CONTACT LINEAR TECHNOLOGY APPLICATIONS ENGINEERING FOR ASSISTANCE.		APPROVALS		TITLE: SCHEMATIC	
PCB DES. M.HAWKINS		ENG. C.MAYOTT		SIZE A	
THIS CIRCUIT IS PROPRIETARY TO LINEAR TECHNOLOGY AND SUPPLIED FOR USE WITH LINEAR TECHNOLOGY PARTS.		IC NO.		LTC2107	
		REV		2	
		DATE: 03-18-2014		SHEET 2 OF 2	