

F

E

D

C

B

A

F

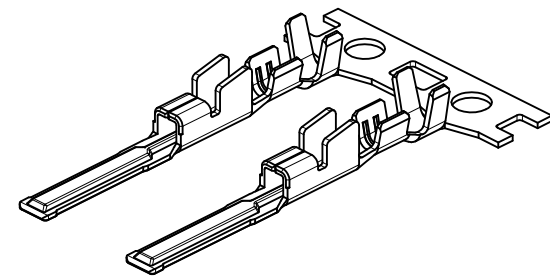
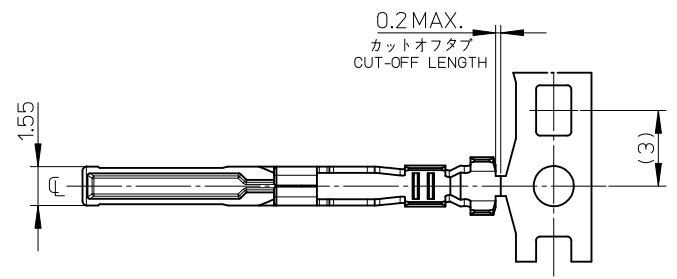
E

D

C

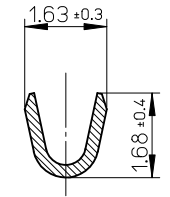
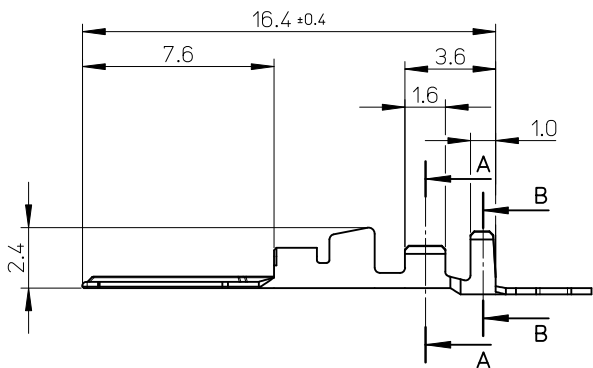
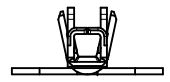
B

A

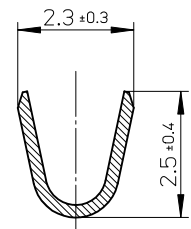
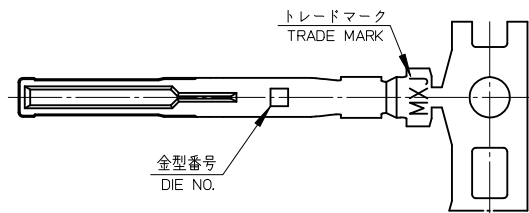


注記:  
NOTES

1. 材質: 銅合金 (t=0.25)  
MATERIAL: COPPER ALLOY (t=0.25)
2. メッキ仕様  
FINISHES  
接点部: ニッケル下地金メッキ  
CONTACT AREA: GOLD OVER NICKEL PLATING  
金メッキ 0.1マイクロメートル以上  
GOLD 0.1 MICROMETERS MINIMUM  
ニッケル下地メッキ 1.0マイクロメートル以上  
NICKEL 1.0 MICROMETERS MINIMUM  
圧着部: ニッケル下地錫メッキ  
CRIMP AREA: TIN OVER NICKEL PLATING  
錫メッキ 1.0マイクロメートル以上  
TIN 1.0 MICROMETERS MINIMUM  
ニッケル下地メッキ 1.0マイクロメートル以上  
NICKEL 1.0 MICROMETERS MINIMUM
3. 適合ハウジング: 503559-\*\*00  
APPLICABLE HOUSING: 503559-\*\*00
4. 適用電線: ΔWG#24~AWG#26  
APPLICABLE WIRE: AWG#24-AWG#26
5. 被覆外径: Φ0.95~1.25  
INSULATION OUTSIDE DIAMETER: φ0.95 - 1.25
6. 製品仕様及び取り扱いについては、製品仕様書PS-503557-001及びコネクタ取扱説明書AS-503557-001を参照願います。  
PLEASE REFER TO PRODUCTS SPECIFICATION PS-503557-001 AND USER'S MANUAL AS-503557-001.
7. 圧着仕様については、圧着仕様書CS-503561-001を参照願います。  
PLEASE REFER TO CRIMPING SPECIFICATION CS-503561-001.
8. 適用圧着工具: 578073-3000 (自動圧着機)  
APPLICABLE CRIMPING TOOL: 578073-3000(AUTOMATIC)
9. ELV及びRoHS適合品。  
ELV AND RoHS COMPLIANT.



SECTION A-A  
SCALE 10:1



SECTION B-B  
SCALE 10:1

連鎖状 CHAIN	503561-0000	503561-****
端子形状 TERMINAL CONFIGURATION	オーダー番号 ORDER No.	MODEL NO.

RELEASED EC NO.: J2010-2130 DRW:KKOBAYASHI 2010/04/22 CHKD:SSAT003 2010/05/24 APPR:NUKITA 2010/05/25	GENERAL TOLERANCES (UNLESS SPECIFIED)		DIMENSION STYLE		SCALE		DESIGN UNITS		THIRD ANGLE PROJECTION	
			MM ONLY		5:1		METRIC			
	10 UNDER ±0.2		DRAWN BY: KKOBAYASHI		DATE: 2010/04/22		TITLE		2.0 FLOATING CONN. PLUG CRIMP TERM.	
	10 OVER 30 UNDER ±0.25		CHECKED BY: SSAT003		DATE: 2010/05/24		MOLEX		MOLEX INCORPORATED	
30 OVER ±0.3		APPROVED BY: NUKITA		DATE: 2010/05/24		DOCUMENT NO.		SD-503561-001		
ANGULAR ±3 °		MATERIAL NO.		SEE CHART		SHEET NO.		1 OF 1		
DRAFT WHERE APPLICABLE MUST REMAIN WITHIN DIMENSIONS		SIZE		A3		THIS DRAWING CONTAINS INFORMATION THAT IS PROPRIETARY TO MOLEX INCORPORATED AND SHOULD NOT BE USED WITHOUT WRITTEN PERMISSION				