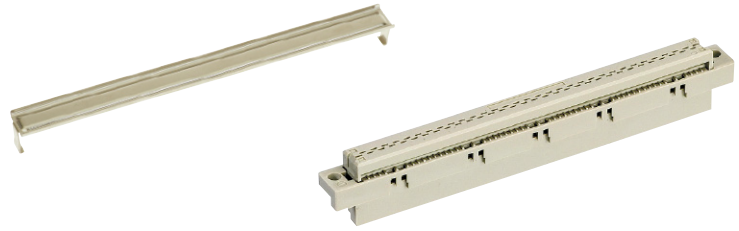


Number of contacts

64



Female connectors

DIN Signal up to 2 A

Identification	No. of contacts	Part number	Drawing	Dimensions in mm
Female connector for insulation displacement	64	Performance level 2 ¹⁾ 09 02 264 6828 Performance level 3 ¹⁾ 09 02 264 7828	<p>Cable 1 to contact 1 b Contact arrangement View from termination side</p>	
Strain relief (metal)		09 03 000 9940		
Panel cut out				
Flat cable AWG 28/7				<p>²⁾ Termination area spacing = 508 mm</p> <p>Important: always store reels vertically</p> <p>Wire (tinned) Cu Gauge AWG 28/7 0.089 mm² Insulation material as per UL style PVC</p>
Round flat cable ³⁾				<p>³⁾ Termination area spacing = 100 mm</p>
with screening 30.48 m	64	09 18 064 7007		
grey 100.00 m	64	09 18 064 7010		
colour coded 30.48 m	64	09 18 064 7005		
twisted pair ²⁾ 30.48 m	64	09 18 064 7006		
with screening 30.48 m	64	09 18 064 7008		
Bench press		09 99 000 0114		
Base plate		09 99 000 0150		
Cable cutter		09 99 000 0116		
Spare parts				
Blade		09 99 000 0179		
Cutting plate		09 99 000 0180		