

Specifications

Electrical Ratings	50mA @ 50VDC	Dielectric Strength	250Vrms min
Electrical Life	100,000 cycles typical	Insulation Resistance	>100MΩ min
Contact Resistance	<50mΩ initial	Operating Temperature	-40°C to 85°C
Actuation Force	160 ± 50gF, 260 ± 50gF	Storage Temperature	-40°C to 85°C
Actuation Travel	.25 ± .1mm		

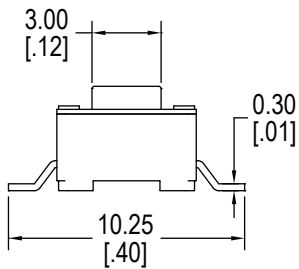
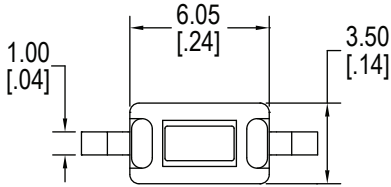
Materials

Actuator	PA6T Nylon
Housing	PA6T Nylon
Cover	Stainless Steel
Contacts	Stainless Steel, Silver Plated
Terminals	Brass, Silver Plated

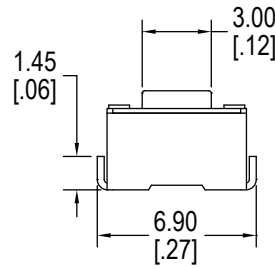
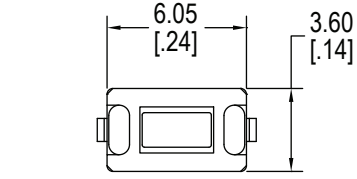
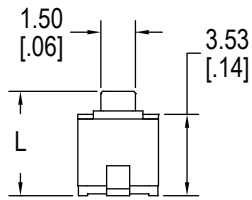
Ordering Information

1. Series	CS1101	4.3	F160	J
CS1101				
2. Actuator Length "L" mm				
4.3 = 4.3mm				
5.0 = 5.0mm				
3. Actuator Force				
F160 = 160gF				
F260 = 260gF				
4. Terminal Options				
Blank = Gull Wing				
J = J Lead				

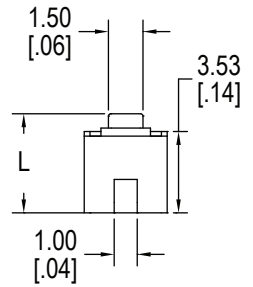
Dimensions



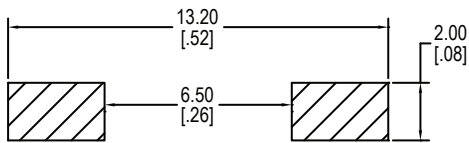
Gull Wing



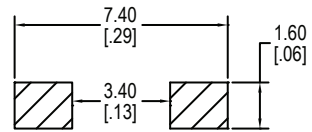
J Lead



PC Layout



Gull Wing



J Lead

Schematic

