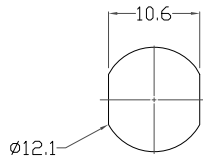


6.0 MAX PANEL THICKNESS



RECOMMENDED PANEL CUTOUT  
+0.10/-0.0

**821BYYY-103R001**

SERIES \_\_\_\_\_  
 POSITIONS \_\_\_\_\_  
 YYY = SEE POSITION CHART  
 GENDER \_\_\_\_\_  
 1 = MALE \_\_\_\_\_  
 TYPE \_\_\_\_\_  
 0 = SOLDER CUP PANEL MOUNT (NON-LATCH)  
 KEY ORIENTATION \_\_\_\_\_  
 3 = 1 KEY // 0°  
 CONTACT PLATING \_\_\_\_\_  
 1 = 7μ" GOLD PLATED

MATERIALS:  
 SHELL:  
 CONTACTS:  
 NUT:  
 INSULATOR:

CHROME PLATED BRASS  
 7μ" GOLD PLATED BRASS  
 CHROME PLATED BRASS  
 PPS

MECHANICAL:

MATING CYCLES: 5000 CYCLES  
 OPERATING TEMP: -40°C TO 200°C  
 SHIELDING: 75dB @ 10MHz // 40dB @ 1GHz  
 IP RATING: 50  
 MAX TORQUE: 4.5 Nm

POSITION CHART // ELECTRICAL/WIRE SPECIFICATIONS						
POSITIONS	CONTACTS	CONTACT Ø	MAX CONTACT mΩ	WORKING VOLTAGE	MAX AMPERAGE	MAX WIRE AWG
002		1.30mm	5.0 mΩ	500 V	15.0 A	20
003		1.30mm	5.0 mΩ	430 V	12.0 A	20
004		0.90mm	6.0 mΩ	430 V	10.0 A	22
005		0.90mm	6.0 mΩ	415 V	9.0 A	22
006		0.70mm	7.5 mΩ	350 V	7.0 A	24
007		0.70mm	7.5 mΩ	315 V	7.0 A	24
008		0.70mm	7.5 mΩ	315 V	5.0 A	24
010		0.50mm	10.0 mΩ	300 V	2.5 A	28
014		0.50mm	10.0 mΩ	260 V	2.0 A	28

RoHS COMPLIANT

UNITS = mm

DO NOT SCALE FROM DRAWING



THESE DRAWINGS AND SPECIFICATIONS ARE THE PROPERTY OF NorComp AND SHALL NOT BE REPRODUCED, COPIED OR USED AS THE BASIS FOR THE MANUFACTURE OR SALE OF APPARATUS WITHOUT WRITTEN PERMISSION.

DRAWN:  
**M. SIGMON**  
 DATE:  
 02/05/2016

NorComp

SCALE: NTS	SHEET 1	OF 1	REV 4
DWG NO.			821BYYY-103R001