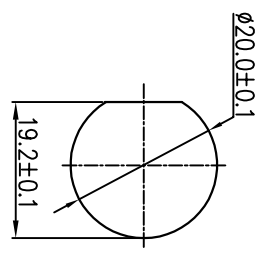
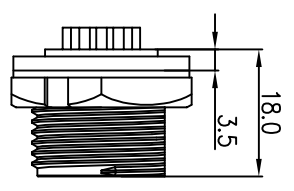


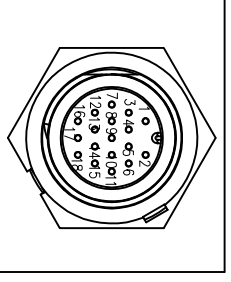
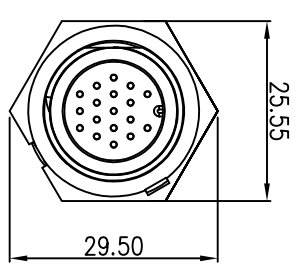
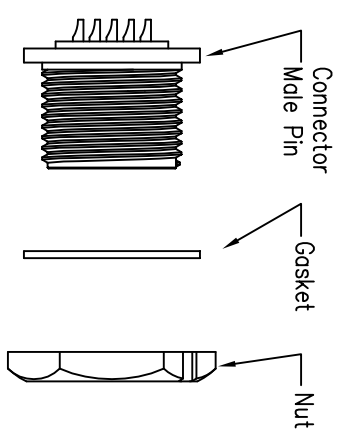
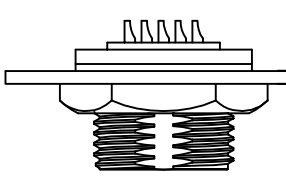
REV.	EON NO.	DESCRIPTION	SIGN	DATE
C1	N/A	INITIAL DRAWING	Liu	2020/05/13



Recommended Panel Cut-Out



Panel T: Max 3.5mm



Pin Number

23XXX515-01

18 Pin

P/N: 23018515-01

Pin Assignments Front View

DESCRIPTION  
Middle Series Screw Type  
Front Mount With Male Pin

SCALE:	1:1	SHEET	1	OF	1
REV:	C1	SIZE	A4	* : Inspection Item	

PART NO	23018515-01	DRAWN BY	Liu	DATE	2020/05/17
DWG NO		CHECKED BY	Mo	DATE	2020/05/17
CUSTOMER		APPROVED BY	Adley	DATE	2020/05/17

**CHOGORI**

- Specification:
- 1.Operation Temperature: -45°C~105°C.
  - 2.Insulation Resistance:100MΩ at DC500V.
  - 3.Contact Resistance:<10mΩ.
  - 4.Withstand Voltage: 1000V AC
  - 5.Operating Current: 2A
  - 6.Operating Voltage:DC 30V
  - 7.Waterproof Rate:IP67 (Mated)
  - 8.Housing: Nylon, Black
  - 9.Male Pin:Copper Alloy, Gold Plated
  - 10.Gasket:Silicon Gray
  - 11.Panel Nut:Nylon, Black
  - 12.Torque Rate:0.8~1.0N•m
  - 13.RoHS Compliant.
  - 14.Mating Cap P/N: 806-00021-00