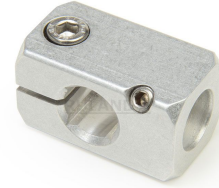
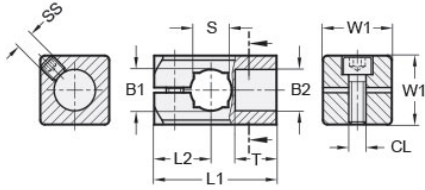




MT10/10-CC90-A

Ruland T-Connector Mini-Clamp, Thru Holes 10mmx10mm, Length 31.5mm, Aluminum




Description

Ruland MT10/10-CC90-A is a 90 degree connector with a thru hole for 10mm round or 8mm square tube, blind hole for 10mm round tube, and 31.5mm overall length. It is designed to fit on Ruland tubes and flange bolt bases that begin with MT10. MT10/10-CC90-A is aluminum and screws are 304 stainless steel for use in most industrial applications. This 90 degree connector clamp is commonly used to support tubes for mounting sensors, screens, reflectors, plexiglass machine guards, and other industrial components. The blind hole reduces complication in assembly and limits the possibility of a mistake being made by inserting a tube too far into the connector for it to function properly. The thru hole allows designers flexibility to reposition the clamp or tube as needed. MT10:12-ALK-M5-20 adjustable clamping lever can be used in place of standard clamp hardware for rapid repositioning of the tube or connector without the need for tools. MT10/10-CC90-A is manufactured by Otto Ganter, inventoried by Ruland, and RoHS3 compliant.

Product Specifications

Thru Hole 1 Diameter B1	10 mm	Thru Hole 2 Diameter B2	10 mm
Thru Hole Tolerance	+0.09/-0 mm	Square Thru Hole S	8 mm
Body Length L1	31.5 mm	Edge To Center L2	15.5 mm
Screw To Edge LS	7 mm	Hole Depth T	10 mm
Width & Height W1	20 mm	Clamp Screw CL	M5
Set Screw SS	M5	Weight (lbs)	0.061700
Material Specification	Aluminum	Manufacturer	JW Winco/ Otto Ganter
UPC	634529231852	Country of Origin	Germany
Tariff Code	7609.00.0000	UNSPC	31162908

Note 1 Performance ratings are for guidance only. The user must determine suitability for a particular application.

Prop 65  **WARNING** This product can expose you to the chemical Nickel (metallic), known to the State of California to cause cancer. For more information go to www.P65Warnings.ca.gov.