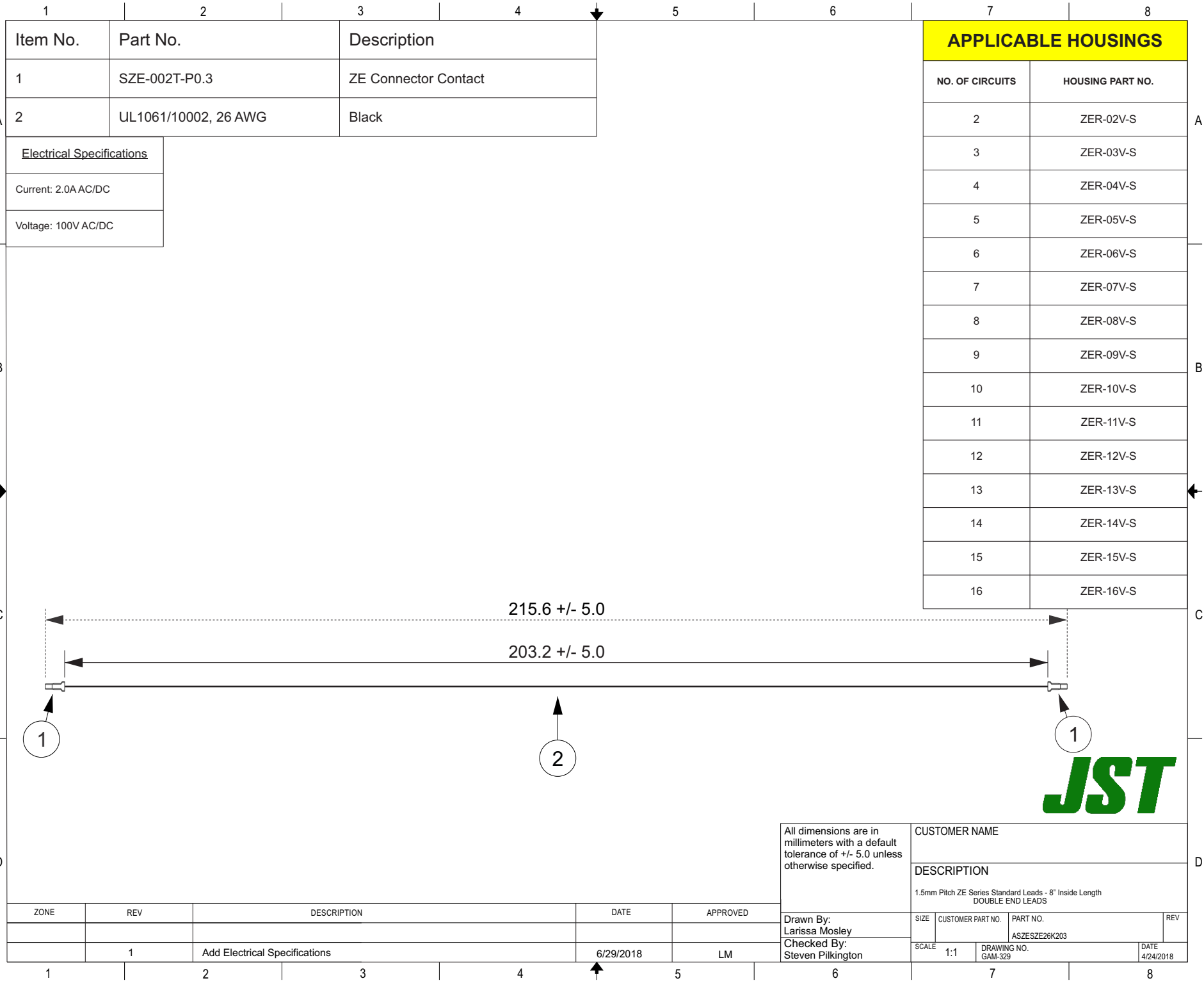


THIS DRAWING CONTAINS INFORMATION THAT IS PROPRIETARY TO J.S.T. AND SHALL NOT BE USED OR SHOWN WITHOUT WRITTEN PERMISSION.



Item No.	Part No.	Description
1	SZE-002T-P0.3	ZE Connector Contact
2	UL1061/10002, 26 AWG	Black

Electrical Specifications
Current: 2.0AAC/DC
Voltage: 100V AC/DC

APPLICABLE HOUSINGS	
NO. OF CIRCUITS	HOUSING PART NO.
2	ZER-02V-S
3	ZER-03V-S
4	ZER-04V-S
5	ZER-05V-S
6	ZER-06V-S
7	ZER-07V-S
8	ZER-08V-S
9	ZER-09V-S
10	ZER-10V-S
11	ZER-11V-S
12	ZER-12V-S
13	ZER-13V-S
14	ZER-14V-S
15	ZER-15V-S
16	ZER-16V-S

All dimensions are in millimeters with a default tolerance of +/- 5.0 unless otherwise specified.		CUSTOMER NAME	
Drawn By: Larissa Mosley		DESCRIPTION	
Checked By: Steven Pilkington		1.5mm Pitch ZE Series Standard Leads - 8" Inside Length DOUBLE END LEADS	
SIZE	CUSTOMER PART NO.	PART NO.	REV
SCALE	1:1	ASZESZE26K203	
DRAWING NO. GAM-329		DATE 4/24/2018	

ZONE	REV	DESCRIPTION	DATE	APPROVED
1	1	Add Electrical Specifications	6/29/2018	LM

