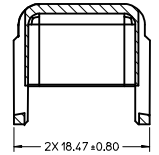
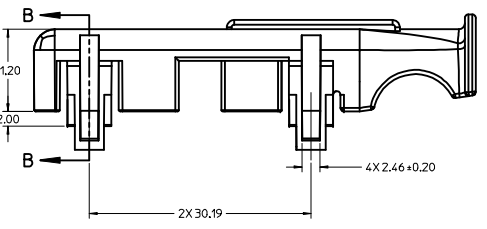
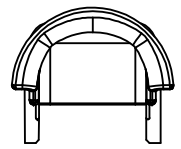
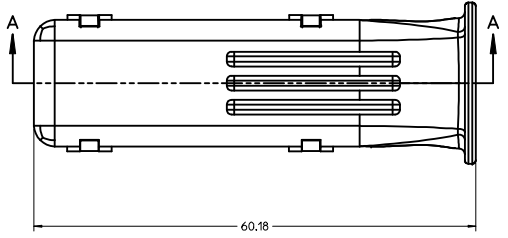


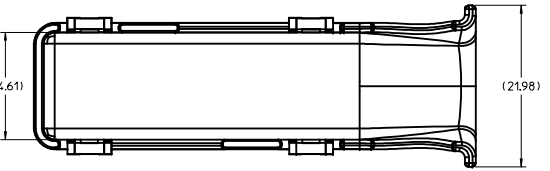
SECTION A-A
SCALE 3:1



SECTION B-B
SCALE 3:1



PART DESCRIPTION	PART NUMBER	MATERIAL	MATING CONNECTOR
24CKT HDAC WIRE DRESS COVER	30700-9010	PA66-GF33	30700-124X



ISOMETRIC VIEWS
SCALE 2:1

- NOTES: VALID UNLESS OTHERWISE SPECIFIED
- GENERAL:
 - PRODUCT SPECIFICATION SEE: PS-30968-024
 - PACKAGING SPECIFICATION PER MOLEX DRAWING: PK-31300-005
 - PARTS MUST BE IN COMPLIANCE TO MOLEX CHEMICAL SUBSTANCES FOR PRODUCTS AND PACKAGING SPECIFICATION: ES-40000-5016
 - DATA MUST BE SUBMITTED UNDER THE MOLEX PART NUMBER TO IMDS (COMPANY ID#13255)
 - DESIGN - MATERIALS:
 - SEE BOM TABLE
 - DESIGN - GEOMETRY:
 - ALL GRAPHIC DATA IS BASIC (NO TOLERANCE) AND MUST BE TAKEN FROM THE DATA FILE AT ITS LATEST REVISION.
 - PRODUCT DESIGN MODEL NUMBER(S): EM-30700-9010
 - GEOMETRIC DIMENSIONS AND TOLERANCES PER ASME Y14.5X-XXXX
 - EDGES AND UNDIMENSIONED DETAILS PER ISO13715
 - CORNERS SHOWN AS SHARP TO BE R 0.2 MAX.
 - LETTERING SHALL BE 0.15 MAX RAISED IN 0.25 MAX RECESS PAD. THIS INCLUDES RECYCLING CODE, CAVITY ID, VENDOR IDENTIFICATION, AND CUSTOMER MATERIAL NUMBER.
 - DESIGN - MANUFACTURING:
 - VISUAL DEFECTS SHALL MEET COSMETIC STANDARD PS-45499-002 (Class XX)

ENTER DESCRIPTION IEC NO: UAU2014-1389 DRAWN BY: JFISCHER01 2014/03/05 CHKD: CHYD APPR: KDKOSKI 2014/03/06 REV DESCRIPTION	QUALITY SYMBOLS	GENERAL TOLERANCES (UNLESS SPECIFIED)	DIMENSION STYLE	SCALE	DESIGN UNITS	THIRD ANGLE PROJECTION
	∇=0 ∇=0 ∇=0	mm INCH 4 PLACES ± --- ± --- 3 PLACES ± --- ± --- 2 PLACES ± 0.13 ± --- 1 PLACE ± 0.25 ± --- 0 PLACE ± --- ± ---	MM ONLY	1:1	METRIC	
	ANGULAR ± 1 ° DRAFT WHERE APPLICABLE MUST REMAIN WITHIN DIMENSIONS	DRAWN BY DATE JFISCHER01 2014/03/05 CHECKED BY DATE APPROVED BY DATE KDKOSKI 2014/03/06	TITLE		24CKT HDAC CONNECTOR WIRE DRESS COVER SALES DRAWING	
	MATERIAL NO. 9999999999	DOCUMENT NO. SD-30700-9010	SHEET NO.		1 OF 1	