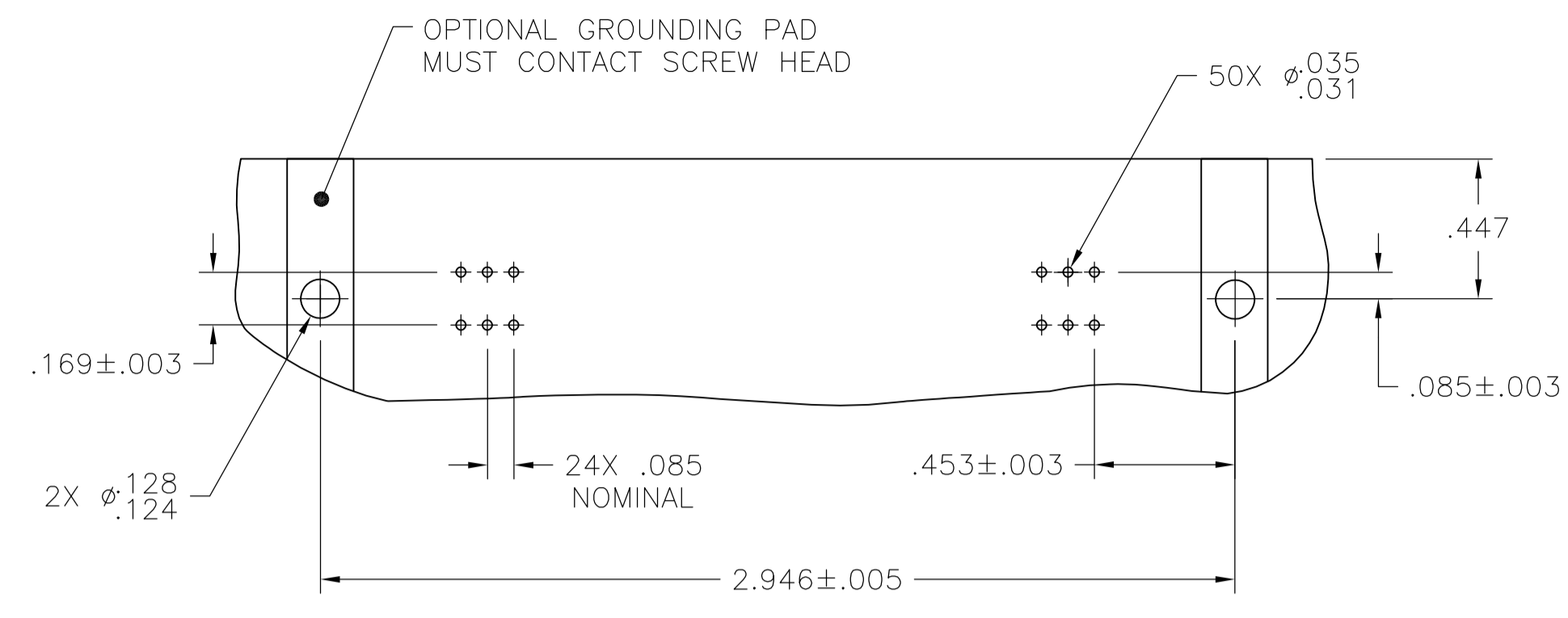
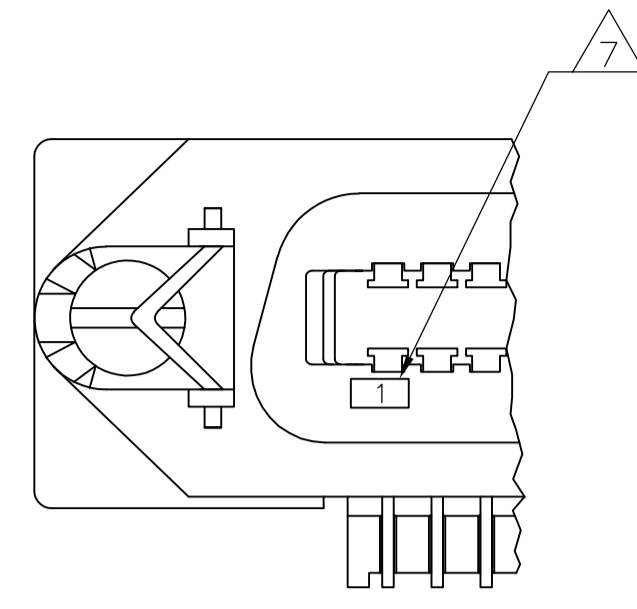


LOC		DIST		REVISIONS			
GP	00	REV	DATE	BY	CHK	APPV	
B		REVISED PER ECO-08-007327	09APR08	BM	WM		

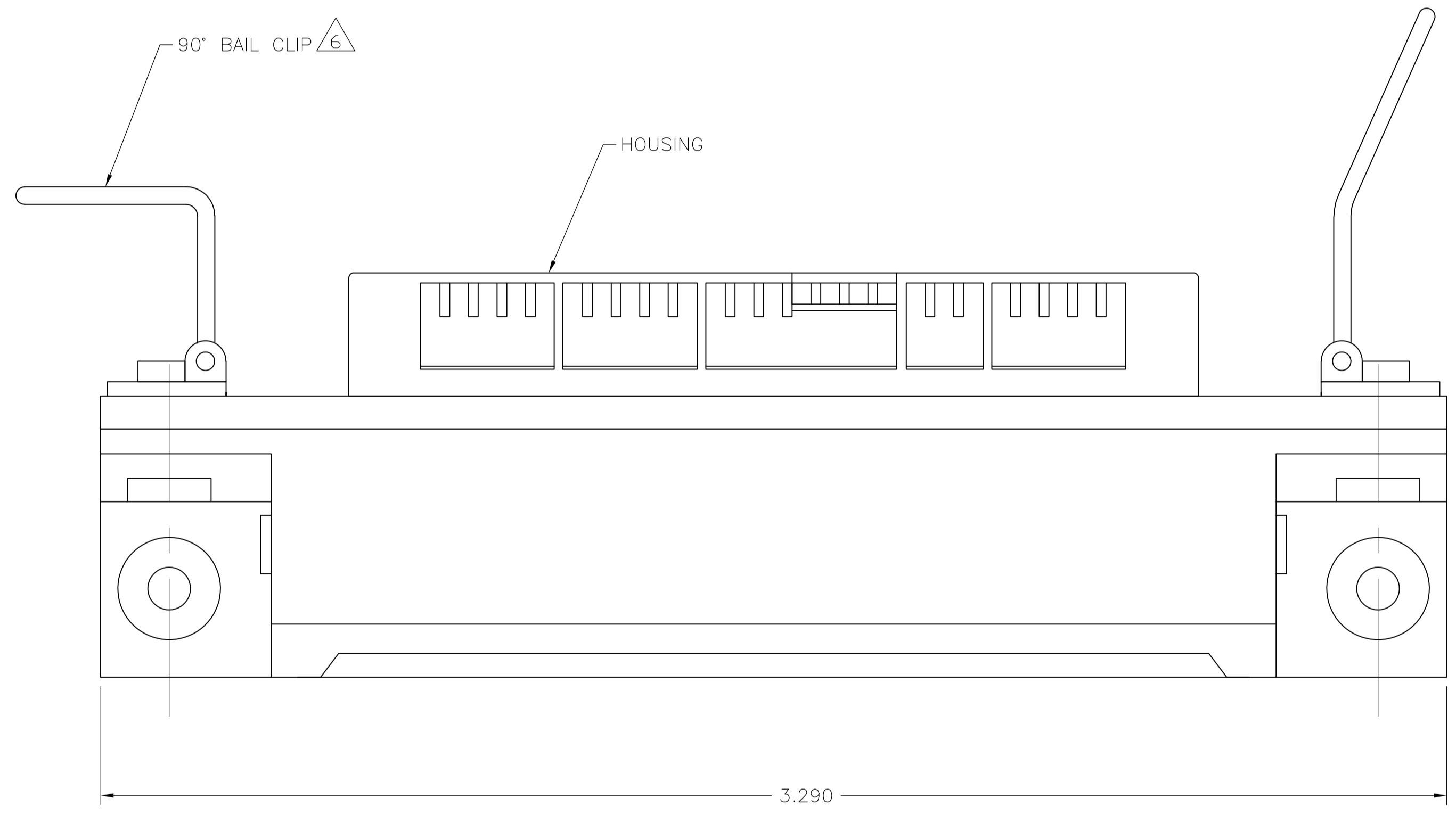


SUGGESTED PRINTED CIRCUIT BOARD MOUNTING DIMENSIONS

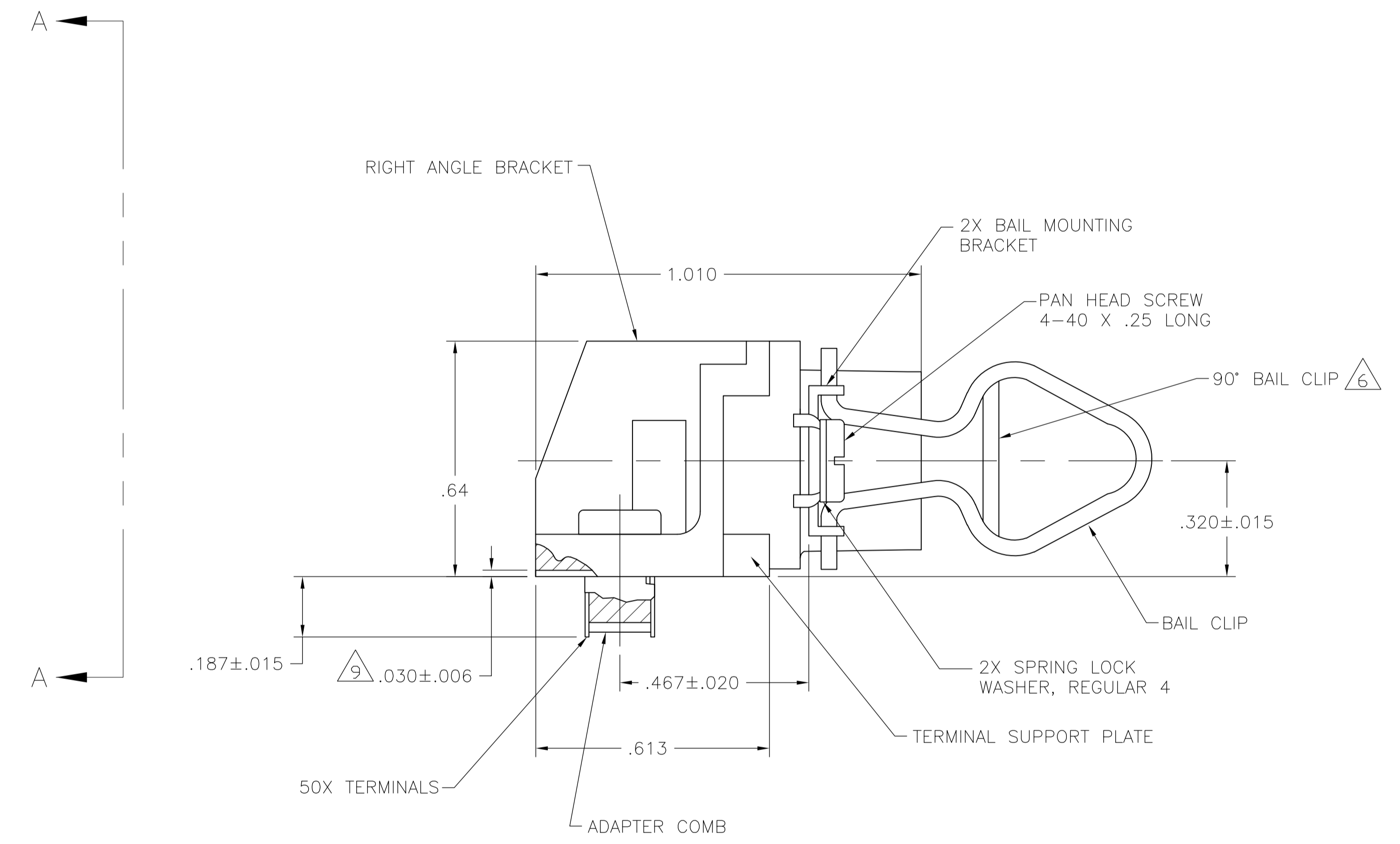


DETAIL A REVERSE ORIENTATION

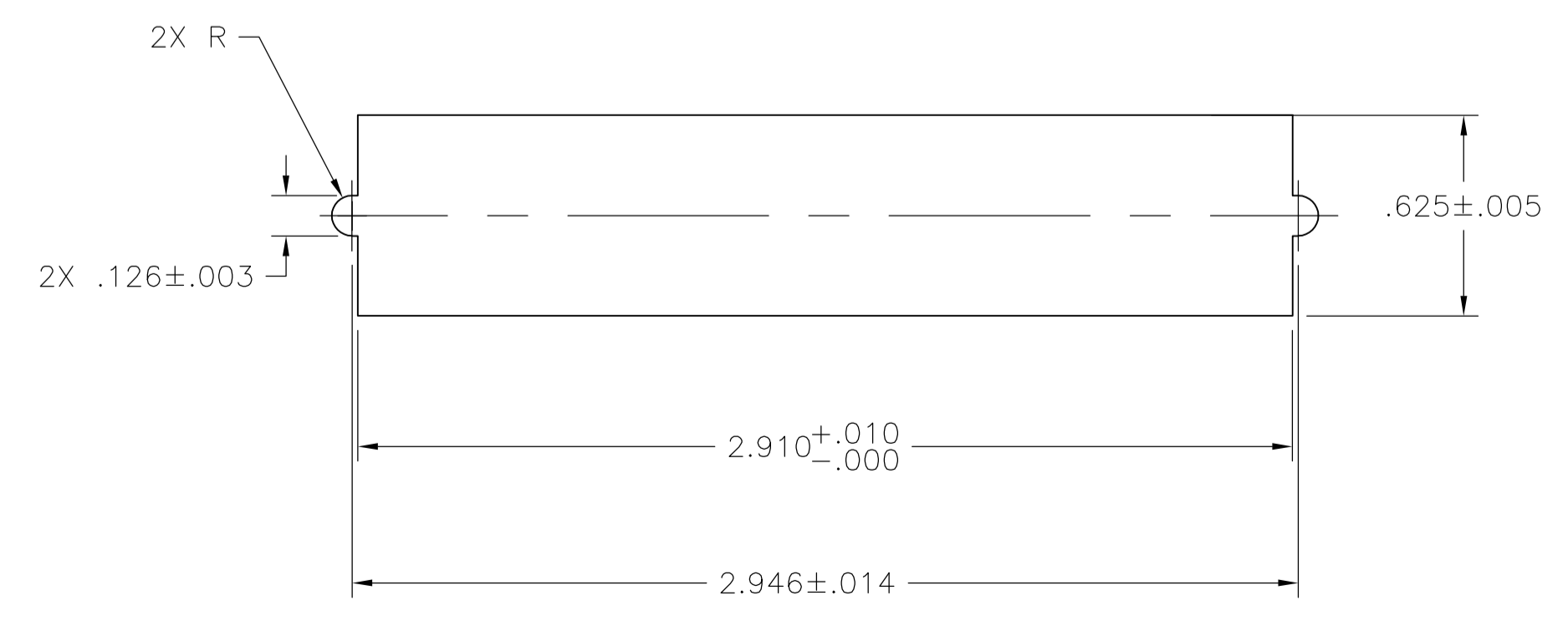
- 1 MATERIAL: HOUSING, RIGHT ANGLE BRACKET, ADAPTER COMB & TERMINAL SUPPORT PLATE - THERMOPLASTIC (BLACK).
 TERMINALS - HIGH STRENGTH COPPER ALLOY PLATED WITH EITHER .000030 MIN GOLD PLATE OR GOLD FLASH OVER PALLADIUM NICKEL PLATE, .000030 MIN TOTAL ON MATING SURFACE, .000120 MIN TIN PLATE ON TAILS. ALL OVER .000050 MIN NICKEL UNDERPLATE OVER ENTIRE TERMINAL.
 BAIL CLIP - PASSIVATED STAINLESS STEEL.
 BAIL BRACKET, WASHER & SCREW - ZINC PLATED CARBON STEEL.
- 2 THE CONTACT SURFACES OF THE TERMINALS ARE COATED WITH LUBRICANT.
- 3 CENTER-TO-CENTER SPACING OF TERMINALS IS .085 NOMINAL.
- 4 ALL DIMENSIONS SHOWN ARE MAXIMUM UNLESS OTHERWISE SPECIFIED.
- 5 DETAIL A IS VIEWED FROM MATING SIDE OF RECEPTACLE ASSEMBLY.
- 6 90° BAIL CLIP LOCATED ON TERMINAL 50 END OF RECEPTACLE ASSEMBLY.
- 7 TERMINAL 1 IS LOCATED IN THIS ROW FOR REVERSE ORIENTATION.
- 8 FOR USE WITH A NO. 4 TYPE SELF TAPPING SCREW.
- 9 TERMINAL SUPPORT PLATE CLEARANCE FOR TERMINAL STRAIN RELIEF & FLUX REMOVAL.



TOP VIEW



SIDE VIEW A-A
 REAR PANEL MOUNTING DETAIL
 SHOWN FOR REFERENCE ONLY
 SCALE 4:1



SUGGESTED REAR PANEL MOUNTING CUTOUT DIMENSIONS

THIS DRAWING IS A CONTROLLED DOCUMENT.		DIN 26AUG05		Tyco Electronics Corporation	
DIMENSIONS: INCHES		TOLERANCES UNLESS OTHERWISE SPECIFIED:		Tyco Electronics Corporation	
0 PLC	± .005	1 PLC	± .005	Harrisburg, PA 17105-3608	
1 PLC	± .005	2 PLC	± .005	NAME	
2 PLC	± .005	3 PLC	± .005	RECEPTACLE ASSEMBLY W/ BAIL LOCK HARDWARE, 50 POSITION, RIGHT ANGLE, CHAMP-LOK	
3 PLC	± .005	4 PLC	± .005	APPLICATION SPEC	
4 PLC	± .005	ANGLES	± .005	SIZE	
MATERIAL		FINISH		CAGE CODE	
1		1		DRAWING NO	
				A1 00779	
				C=5555492	
				RESTRICTED TO	
				WEIGHT	
				A1 00779	
				CUSTOMER DRAWING	
				SCALE 2:1	
				SHEET 1 OF 1	
				REV B	