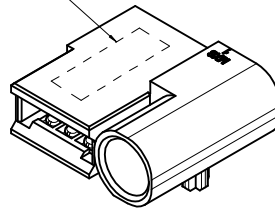
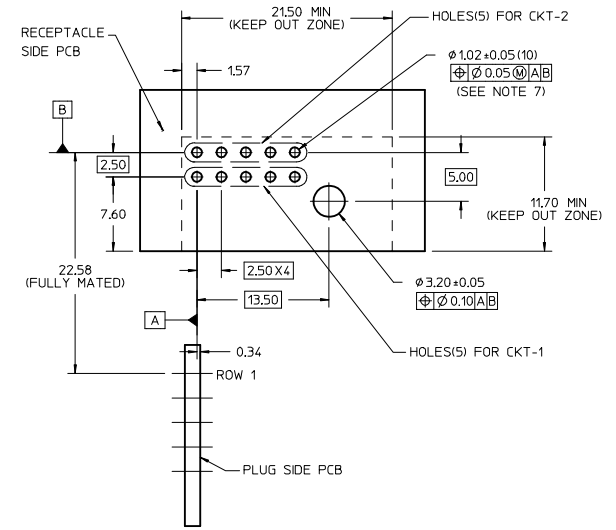
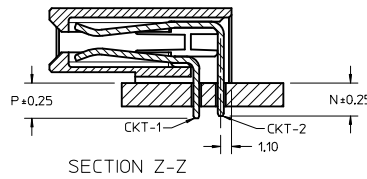
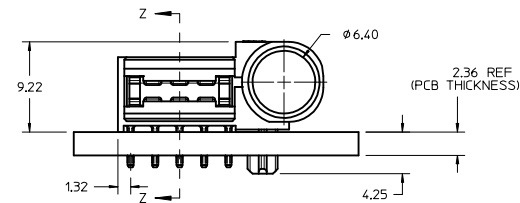


PART NUMBER AND DATE CODE

XX XXX
YEAR DAY



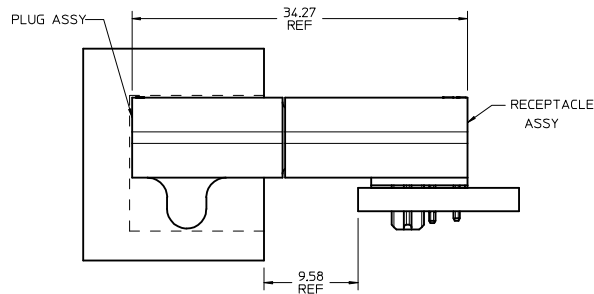
P/N: 172047-1001



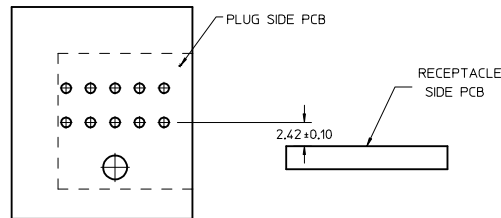
RECOMMENDED PCB LAYOUT AND KEEP OUT ZONE

NOTES:

1. MATERIAL HOUSING: GLASS FILLED LCP (LIQUID CRYSTAL POLYMER), 94V-0, COLOR-BLACK CONTACT: COPPER ALLOY
2. FINISH: SELECT GOLD - 0.76 MICROMETERS/30 MICROINCHES MINIMUM CONTACT SELECT TIN - 3.81 MICROMETERS/150 MICROINCHES MINIMUM TAIL BOTH OVER NICKEL - 1.27 MICROMETERS/50 MICROINCHES MINIMUM.
3. POWER TERMINALS LUBRICATED IN CONTACT AREA
4. PRODUCT SPECIFICATION: PS-172047-1001
5. PACKAGING: TRAY PACKED PER PACKAGING SPEC: PK-172047-1001
6. PRODUCT TO MEET RoHS COMPLIANT
7. PLATED THRU HOLE SIZE, REFER TO PS-46114-001 FOR DETAILS
8. ASSEMBLY MATES TO MOLEX PART P/N: 172045-1001
9. TAIL DESIGN: SOLDER TAIL

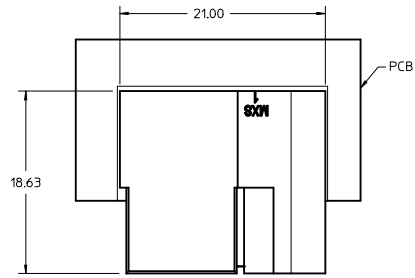


MATED PROFILE



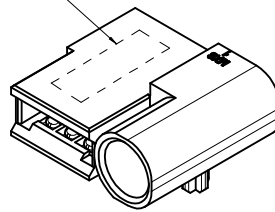
MATERIAL P/N	DIM P	DIM N
1720471001	3.60	3.35
1720471002	4.50	4.25
1720471003	2.90	2.65

REV DIM TO REF IEC NO: UCP2016-2684 DRAWN: OULLES 2016/01/05 CHKDRP: SZCZOR 2016/01/06 APPROB: PLSZCZOR	QUALITY SYMBOLS	GENERAL TOLERANCES (UNLESS SPECIFIED)	DIMENSION STYLE	SCALE	DESIGN UNITS	THIRD ANGLE PROJECTION
	▽=0	mm INCH	MM ONLY	4:1	METRIC	☉
	▽=0	4 PLACES ± ---	DRAWN BY	DATE	TITLE	
	▽=0	3 PLACES ± ---	EANG	2013/09/23	ORTHO POWER RECEPTACLE ASSY	
	2 PLACES ± 0.25	CHECKED BY	DATE	APPROVED BY		
	1 PLACE ± 0.25			KHLIM	2013/10/22	DATE
	ANGULAR ± 1/2°			MATERIAL NO.		DOCUMENT NO.
		DRAFT WHERE APPLICABLE MUST REMAIN WITHIN DIMENSIONS		SEE TABLE		SD-172047-1001
				MATERIAL NO.		SHEET NO.
				SD-172047-1001		1 OF 1
				THIS DRAWING CONTAINS INFORMATION THAT IS PROPRIETARY TO MOLEX INCORPORATED AND SHOULD NOT BE USED WITHOUT WRITTEN PERMISSION		

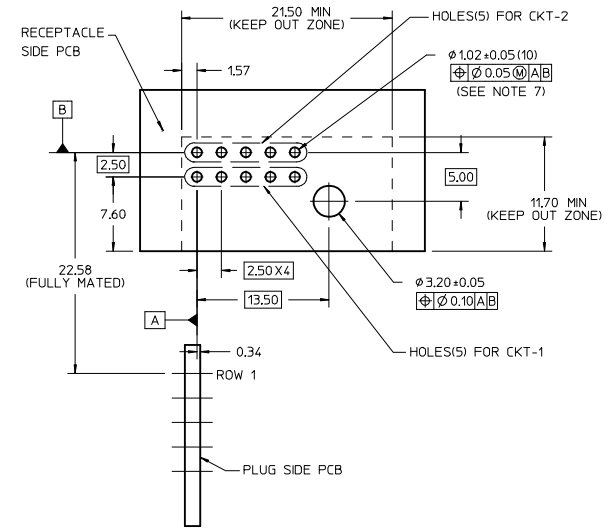
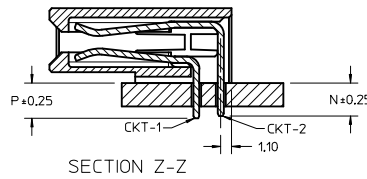
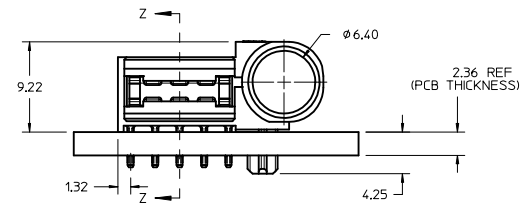


PART NUMBER AND DATE CODE

XX XXX
YEAR DAY



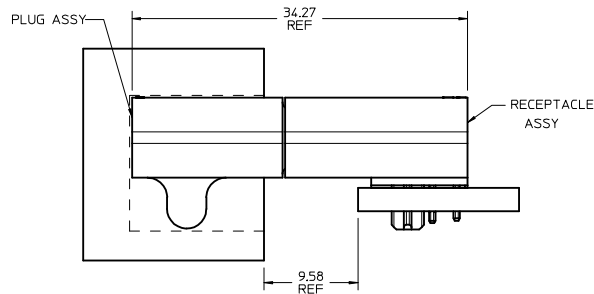
P/N: 172047-1001



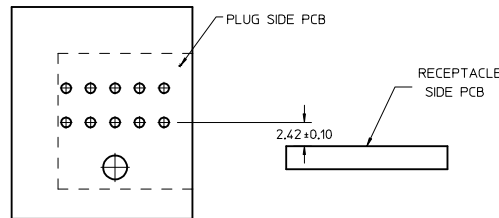
RECOMMENDED PCB LAYOUT AND KEEP OUT ZONE

NOTES:

1. MATERIAL HOUSING: GLASS FILLED LCP (LIQUID CRYSTAL POLYMER), 94V-0, COLOR-BLACK CONTACT: COPPER ALLOY
2. FINISH: SELECT GOLD - 0.76 MICROMETERS/30 MICROINCHES MINIMUM CONTACT
SELECT TIN - 3.81 MICROMETERS/150 MICROINCHES MINIMUM TAIL
BOTH OVER NICKEL - 1.27 MICROMETERS/50 MICROINCHES MINIMUM.
3. POWER TERMINALS LUBRICATED IN CONTACT AREA
4. PRODUCT SPECIFICATION: PS-172047-1001
5. PACKAGING: TRAY PACKED PER PACKAGING SPEC: PK-172047-1001
6. PRODUCT TO MEET RoHS COMPLIANT
7. PLATED THRU HOLE SIZE, REFER TO PS-46114-001 FOR DETAILS
8. ASSEMBLY MATES TO MOLEX PART P/N: 172045-1001
9. TAIL DESIGN: SOLDER TAIL



MATED PROFILE



MATERIAL P/N	DIM P	DIM N
1720471001	3.60	3.35
1720471002	4.50	4.25
1720471003	2.90	2.65

REV DIM TO REF IEC NO: UCP2016-2684 DRAWN: OULLES 2016/01/05 CHKDRP: SZCZOR 2016/01/06 APPR: RPL: SZCZOR	QUALITY SYMBOLS	GENERAL TOLERANCES (UNLESS SPECIFIED)	DIMENSION STYLE	SCALE	DESIGN UNITS	THIRD ANGLE PROJECTION
	$\nabla=0$ $\nabla=0$ $\nabla=0$	mm INCH 4 PLACES +--- +--- 3 PLACES +--- +--- 2 PLACES +0.25 +--- 1 PLACE +0.25 +--- ANGULAR ±1/2°	MM ONLY	4:1	METRIC	
	DESCRIPTION	DRAFT WHERE APPLICABLE MUST REMAIN WITHIN DIMENSIONS	DRAWN BY: EANG DATE: 2013/09/23 CHECKED BY: DATE: APPROVED BY: KHLIM DATE: 2013/10/22	ORTHO POWER RECEPTACLE ASSY MOLEX INCORPORATED		
	MATERIAL NO. SD-172047-1001 SHEET NO. 1 OF 1	THIS DRAWING CONTAINS INFORMATION THAT IS PROPRIETARY TO MOLEX INCORPORATED AND SHOULD NOT BE USED WITHOUT WRITTEN PERMISSION				