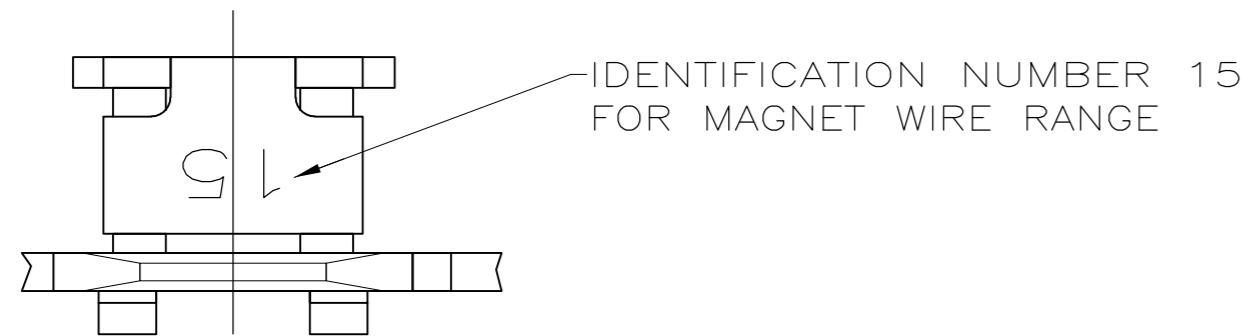
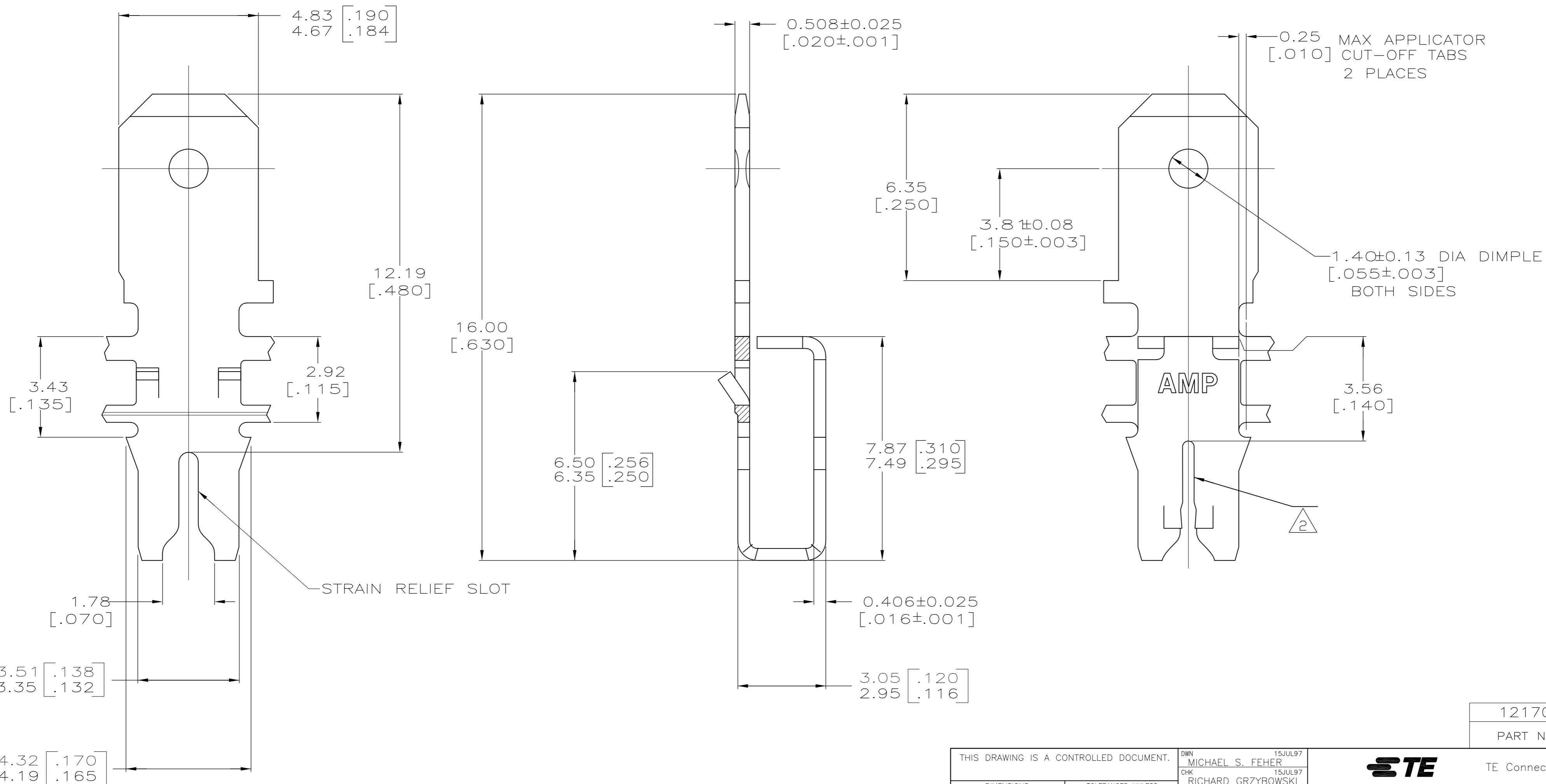


THIS DRAWING IS UNPUBLISHED. RELEASED FOR PUBLICATION  
 © COPYRIGHT - By - ALL RIGHTS RESERVED.

LOC		DIST		REVISIONS			
P	LTR	DESCRIPTION		DATE	DWN	APVD	
AF	50	D2	ECR-15-005665	10AUG2015	BDA	PKS	



- 1 CONTINUOUS STRIP ON REELS (SPLICE FREE) WITH TERMINALS LOCATED ON  $5.59 \pm 0.08$  [ $.220 \pm .003$ ] CENTERS.
- 2 SLOT TERMINATES A SINGLE MAGNET WIRE ONLY. COPPER RANGE: 0.54-0.81mm [#23.5-#20] AWG. ALUMINUM RANGE: 0.72-0.91mm [#21-#19] AWG. ALUMINUM WIRE RANGE APPLIES FOR POST-TIN PLATED VERSIONS ONLY.



1217004-1  
PART NUMBER

THIS DRAWING IS A CONTROLLED DOCUMENT.		DWN 15JUL97 MICHAEL S. FEHER	<b>STE</b> TE Connectivity	
DIMENSIONS: INCHES		CHK 15JUL97 RICHARD GRZYBOWSKI		
TOLERANCES UNLESS OTHERWISE SPECIFIED:		APVD 15JUL97 KURT RANDOLPH	NAME	
0 PLC ± -		PRODUCT SPEC	TERMINAL, TAB, 4.75 [.187] FASTON,™ MAG-MATE™	
1 PLC ± -		APPLICATION SPEC	SIZE CAGE CODE DRAWING NO RESTRICTED TO	
2 PLC ± 0.25 [.010]		108-2012	A2 00779 C=1217004	
3 PLC ± -		114-2067	SCALE 10:1 SHEET 1 of 1 REV D2	
4 PLC ± -		WEIGHT -		
ANGLES ± -		CUSTOMER DRAWING		
FINISH				
BRASS		TIN PLATE		