

SCHMATIC



SPECIFICATIONS

FUNCTION:  
1P2T ON-OFF-ON

RATINGS:  
ANSI/UL 1054 and CAN/CSA C22.2 No. 55 (E194579):  
16A 125VAC [UR, cUR]  
10A 250VAC [UR, cUR]  
1/3HP 125/250VAC [UR, cUR]

EN 61058-1:2002:  
10(4)A 250V~ μ 1E4 T125/55 [ENEC14]  
10(2)A 250V~ μ 5E4 T85/55 [ENEC14]

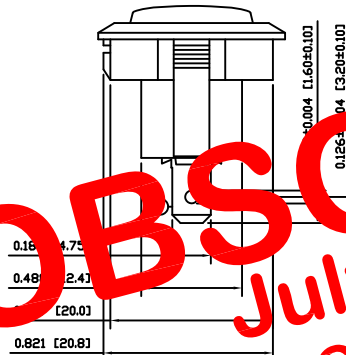
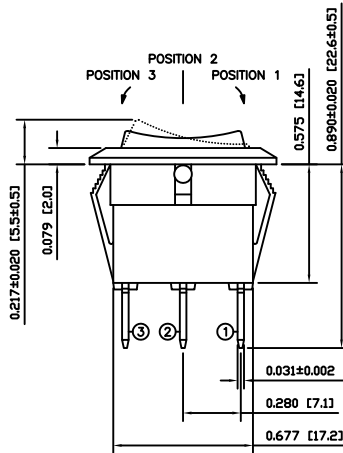
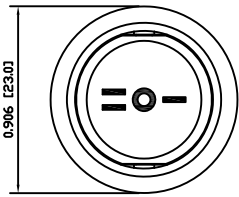
CONTACT RESISTANCE:  
Initial: 35mΩ Max. at 50VAC

INSULATION RESISTANCE:  
100MΩ Min. at 500VDC

DIELECTRIC STRENGTH:  
1,500VAC For 1 Minute

ELECTRICAL LIFE:  
6,000 Cycles [UR, cUR]  
10,000 Cycles [ENEC14: 10(4)A 250V~]  
50,000 Cycles [ENEC14: 10(2)A 250V~]

TEMPERATURE:  
Operating: -20°C to 105°C [UR, cUR]  
Operating: -20°C to 125°C [ENEC14: 10(4)A 250V~]  
Operating: -20°C to 85°C [ENEC14: 10(2)A 250V~]



OBSOLETE

July 2018

PCR 23445

COLORS AND MARKINGS

BODY:  
Black

ACTUATOR:  
Black

MARKINGS:  
1/O/II Vertical (S)

MARKING COLOR:  
White

MATERIALS

BODY:  
Polyamide 6/6 (PA66), UL94 V-2

ACTUATOR:  
Polyamide 6/6 (PA66), UL94 V-2

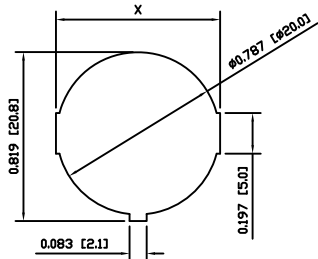
SPRING:  
Steel

SPRING COVER:  
Steel

CONTACTS:  
Silver Alloy Plated Copper

TERMINALS:  
Silver Plated Copper

SUGGESTED PANEL CUTOUT



PANEL THICKNESS	X
0.030~0.049 [0.75~1.25]	0.795 [20.2]
0.049~0.079 [1.25~2.00]	0.803 [20.4]
0.079~0.118 [2.00~3.00]	0.811 [20.6]

ACTUATOR	A	09/08/10	CAB
BODY	B	10/03/31	CAB
COLORS	B	10/04/01	CAB
MATERIALS	A	09/08/10	CAB
SPECIFICATIONS	A	09/08/10	CAB
REFERENCE	REV.	DATE	BY

THE INFORMATION CONTAINED IN THIS DOCUMENT IS PROPRIETARY TO E-SWITCH-LAMB INDUSTRIES AND IS NOT TO BE COPIED OR TRANSFERRED

A	INITIAL RELEASE	21077	3/21/13	ERP
REV.	DESCRIPTION	PCR	DATE	DRAWN BY

DIMENSIONS	TITLE
INCHES [MILLIMETERS]	RR115C112S
GENERAL TOLERANCES	
±0.008 [±0.2] / ±1'	
SCALE	PROJECTION
DRAWING NOT TO SCALE	38-RR115C112S

RR115C112S

ITEM NUMBER	DATE	REVISION
38-RR115C112S	MARCH 21, 2013	A