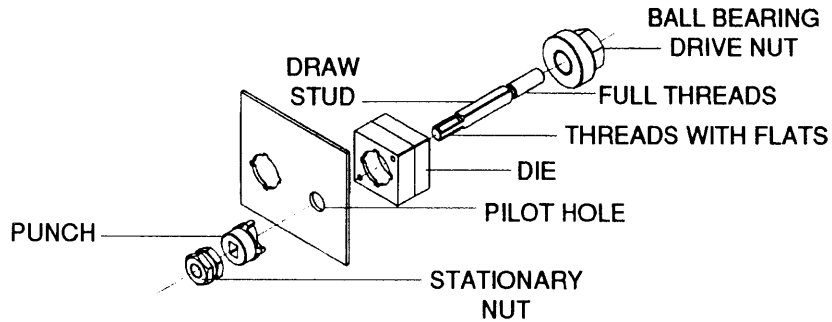


GREENLEE Oil Tight Punches

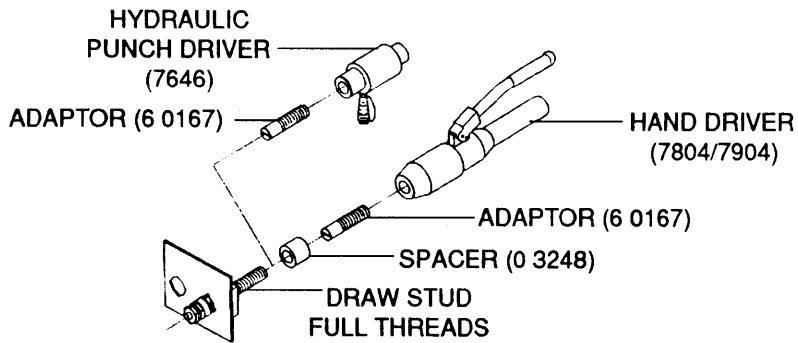
Wrench Operated Punching:

To punch assemble as shown, turn Ball Bearing Drive Nut clockwise with 1-1/4" (31.8 mm) wrench.



Hydraulic Driver Punching:

Assemble as shown above, replacing Ball Bearing Drive Nut with Hydraulic Driver and Spacer.



NOTE: Seat Adaptor fully into Hydraulic Driver. Seat Draw Stud fully into Adaptor.

CAUTION: DO NOT OPERATE HYDRAULIC DRIVERS WITH ELECTRIC POWER PUMPS.

See your Greenlee Distributor for our complete line of Punches and Punch Drivers.

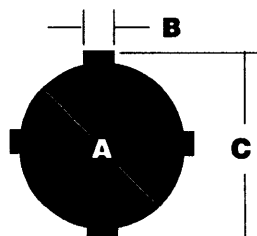
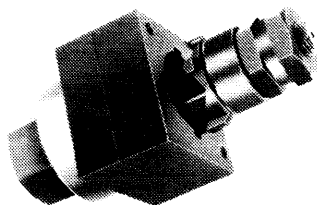


GREENLEE Oil Tight Punches

⚠ WARNING: Do not punch enclosures containing or close to live circuits. Electrical shock could result causing severe injury or death.

⚠ CAUTION: Make sure you have firm footing and balance when operating. Position yourself to avoid any injuries in case of slippage, breakage or any other loss of control while punching.

⚠ SAFETY INSTRUCTION: Inspect all parts before assembly and use for cracks, chips, worn threads or other damage. Make sure punch is sharp before using. Replace parts as needed with genuine Greenlee Replacement Parts.



OIL TIGHT PUNCH SPECIFICATIONS

	7/8"	1-7/32"
CAT. NO./UPC NO. 78-3310-	6 0238	6 0242
A	7/8" (22.5 mm)	1-7/32"(30.5 mm)
B	1/8"(3.2 mm)	.190"(4.8 mm)
C	1"(25.4 mm)	1.380"(35.1mm)
PILOT HOLE SIZE	5/8"(16.0 mm)	5/8"(16.0 mm)
CAPACITY MILD STEEL	14 ga.(2 mm)	10 ga.(3 mm)
OPERATION	Wrench or Hyd.	Wrench or Hyd.
PARTS:		
- Punch	6 0239	6 0243
- Die	6 0250	6 0249
- Draw Stud	6 0117	6 0117
- Ball Bearing Drive Nut	6 0165	6 0165
- Stationary Nut	6 0258	6 0258

GREENLEE **TEXTRON**

Greenlee Textron Inc. / Subsidiary of Textron Inc.
4455 Boeing Drive, Rockford, IL 61109-2988 USA