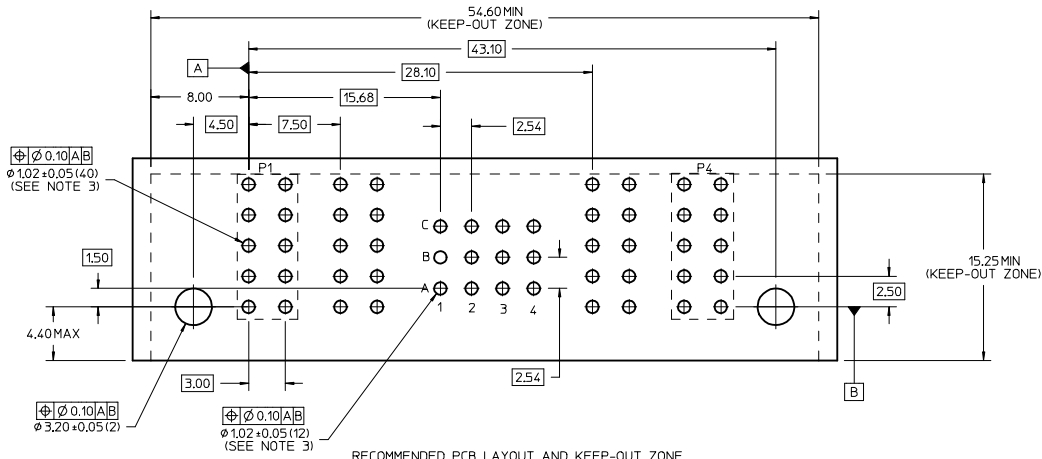
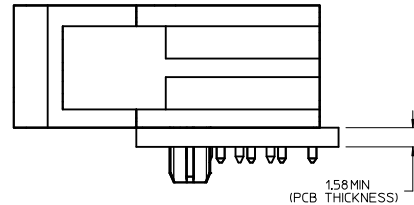
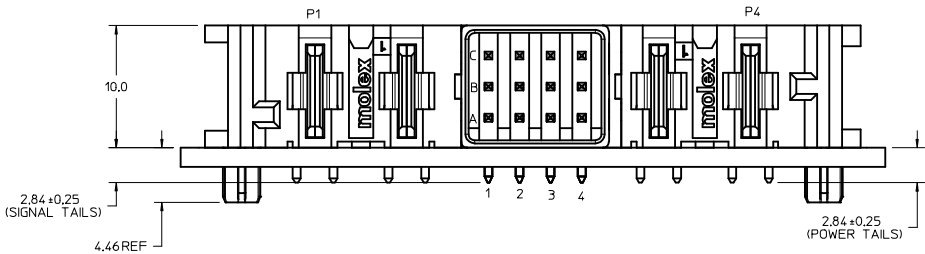
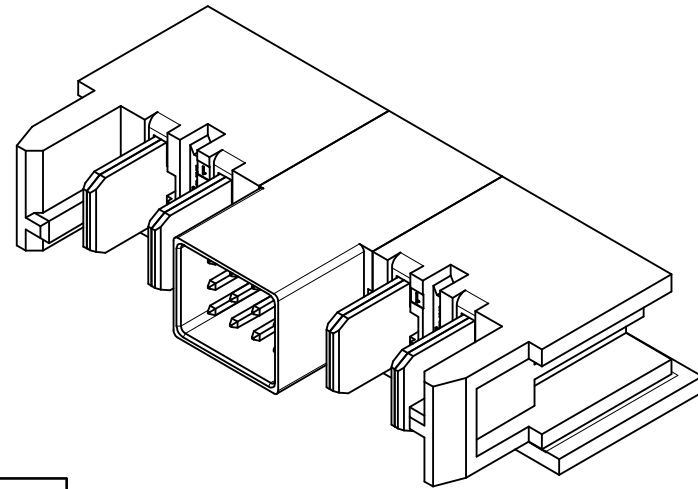
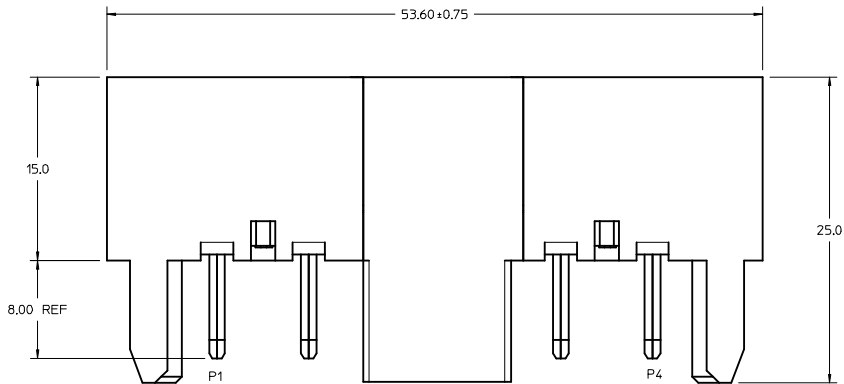


- NOTES:
- MATERIAL:
    - HOUSINGS: LCP UL94, V-0, COLOR : BLACK
    - TERMINALS: HIGH CONDUCTIVITY COPPER ALLOY
    - PLATING: 1.27 MICROMETER (50 MICROINCH) NICKEL OVERALL WITH 2.54 MICROMETER (100 MICROINCH) SELECTIVE TIN ON TAILS AND 0.762 MICROMETER (30 MICROINCH) SELECTIVE GOLD ON CONTACT AREA
  - PACKAGING: ASSEMBLIES TO BE TRAY PACKED PER PACKAGING SPEC: PK-46437-003
  - PLATED THRU HOLE SIZE, REFER TO PS-173693-001 FOR DETAILS
  - PRODUCT SPEC: PS-173693-001
  - PRODUCT TO MEET RoHS REQUIREMENTS
  - ASSEMBLY MATES TO MOLEX RECEPTACLE HOUSING P/N 172510-0412. SEE SD-172510-001 FOR DETAILS
  - TAIL DESIGN: SOLDER TAIL
  - POWER TERMINALS ARE LUBRICATED

<b>REVISE NOTES 3 &amp; 4</b> IEC NO. UCP2016-4071 DRAWN BY: SCHAEFER 2016/04/18 CHKD: APPR: BPI/SZCZOR 2016/10/03	QUALITY SYMBOLS	GENERAL TOLERANCES (UNLESS SPECIFIED)	DIMENSION STYLE	SCALE	DESIGN UNITS	THIRD ANGLE PROJECTION
	▽=0	mm INCH	MM ONLY	5:1	METRIC	☉
	▽=0	4 PLACES ± --- ± ---	DRAWN BY DATE	GB	2014/05/07	WTB R/A PLUG ASSY
	▽=0	3 PLACES ± --- ± ---	CHECKED BY DATE	BPI/SZCZOR	2016/10/03	2P-12S-2P
		1 PLACE ± 0.25 ± ---	APPROVED BY DATE			TEN60 POWER FAMILY
		0 PLACE ± --- ± ---	MATERIAL NO:			<b>molex</b>
		ANGULAR ±1/2°	SIZE	172453-0412	DOCUMENT NO.	SD-172453-0412
		DRAFT WHERE APPLICABLE MUST REMAIN WITHIN DIMENSIONS				SHEET NO. 1 OF 1



- NOTES:
- MATERIAL:
    - HOUSINGS: LCP UL94, V-0, COLOR : BLACK
    - TERMINALS: HIGH CONDUCTIVITY COPPER ALLOY
    - PLATING: 1.27 MICROMETER (50 MICROINCH) NICKEL OVERALL WITH 2.54 MICROMETER (100 MICROINCH) SELECTIVE TIN ON TAILS AND 0.762 MICROMETER (30 MICROINCH) SELECTIVE GOLD ON CONTACT AREA
  - PACKAGING: ASSEMBLIES TO BE TRAY PACKED PER PACKAGING SPEC: PK-46437-003
  - PLATED THRU HOLE SIZE, REFER TO PS-173693-001 FOR DETAILS
  - PRODUCT SPEC: PS-173693-001
  - PRODUCT TO MEET RoHS REQUIREMENTS
  - ASSEMBLY MATES TO MOLEX RECEPTACLE HOUSING P/N 172510-0412. SEE SD-172510-001 FOR DETAILS
  - TAIL DESIGN: SOLDER TAIL
  - POWER TERMINALS ARE LUBRICATED

<b>REVISE NOTES 3 &amp; 4</b> IEC NO. UCP2016-4071 DRAWN BY SCHAEFER 2016/04/18 CHKD: APPR:BPISZCZOR 2016/10/03	QUALITY SYMBOLS	GENERAL TOLERANCES (UNLESS SPECIFIED)	DIMENSION STYLE	SCALE	DESIGN UNITS	THIRD ANGLE PROJECTION
	▽=0	mm INCH	MM ONLY	5:1	METRIC	☉
	▽=0	4 PLACES ± --- ± ---	DRAWN BY DATE	GB	2014/05/07	WTB R/A PLUG ASSY
	▽=0	3 PLACES ± --- ± ---	CHECKED BY DATE			2P-12S-2P
		2 PLACES ± 0.13 ± ---	APPROVED BY DATE			TEN60 POWER FAMILY
		1 PLACE ± 0.25 ± ---	BPISZCZOR 2016/10/03			<b>molex</b>
		0 PLACE ± --- ± ---	MATERIAL NO:			DOCUMENT NO.
		ANGULAR ±1/2°	172453-0412			SD-172453-0412
		DRAFT WHERE APPLICABLE MUST REMAIN WITHIN DIMENSIONS	SIZE D			SHEET NO. 1 OF 1