

NOTES

1. APPL. CLASS TO DIN 40040 HME (-25°C/+100°C)
2. USE WITH CABLES 28AWG STD. 26AWG ST. AND 56AWG (69 STRANDS) SUPERFLEX
3. TERMINATION SPECIFICATION: ES-99033-0001
4. PRODUCT SPECIFICATION: PS-99020-0011

HOUSING

MATERIAL: NYLON 6 (PA6) UL94 V-2

IDT CONTACT

MATERIAL: PHOS BRONZE 0.17mm THK HV 180-200

PLATING:

TIN: 0.002mm-0.004mm PURE TIN

PALLADIUM NICKEL(PdNi): CONTACT AREA: SELECTIVE PdNi: 0.0006mm MINIMUM UNDER 0.00005mm MINIMUM GOLD FLASH
SMT TAILS: TIN (Sn), 0.003mm MINIMUM OVER NICKEL UNDERPLATE.

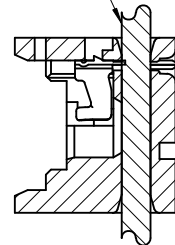
93338-*3**

0 = 0.002mm PURE TIN ASSY
3 = 0.0006mm PdNi ASSY
SEE CONTACT PLATING NOTE

04 TO 26 = CCT SIZE
51 TO 98 = ASSY ON REELS, SEE CHART
COLOUR: WHITE

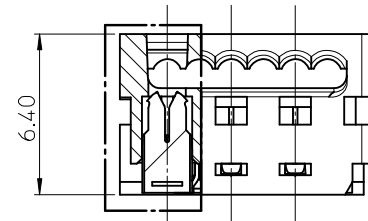
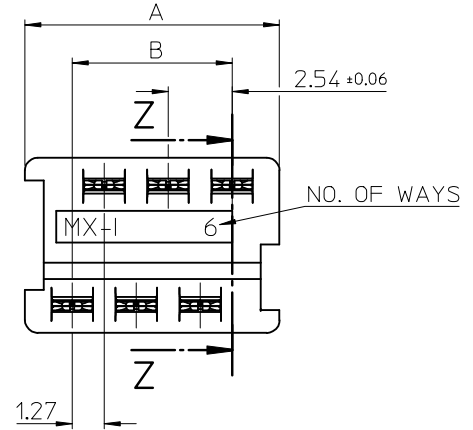
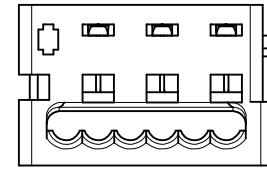
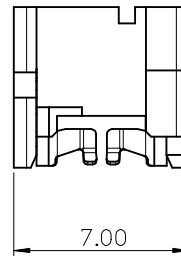
PART NO.	CCT SIZE	DIM. A	DIM. B
93338-*326	26	35.53	31.75
↑	↑	↑	↑
-*324	24	32.99	29.21
↑	↑	↑	↑
-*322	22	30.45	26.67
↑	↑	↑	↑
-*320	20	27.91	24.13
↑	↑	↑	↑
-*318	18	25.37	21.59
↑	↑	↑	↑
-*316	16	22.83	19.05
↑	↑	↑	↑
-*314	14	20.29	16.51
↑	↑	↑	↑
-*312	12	17.75	13.97
↑	↑	↑	↑
-*310	10	15.21	11.43
↑	↑	↑	↑
-*308	8	12.67	8.89
↑	↑	↑	↑
-*306	6	10.13	6.35
↓	↓	↓	↓
93338-*304	4	7.59	3.81

RIBBON CABLE
1.27mm PITCH



Z-Z

SECTION SHOWING ASSY AFTER TERMINATION

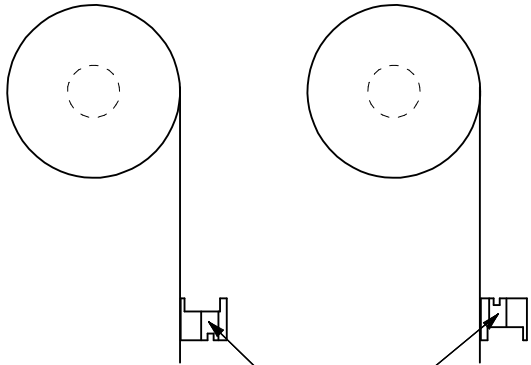


CUTAWAY1

MOD CONTACT FINISH EC NO: IPGZ012-1116 DRWN: DBYRNES 2012/09/19 CHKD: APPR: STGRIFFIN 2012/11/06	QUALITY SYMBOLS ▽=0 ◻=0	GENERAL TOLERANCES (UNLESS SPECIFIED) mm INCH 4 PLACES ± --- ± --- 3 PLACES ± --- ± --- 2 PLACES ± 0.10 ± --- 1 PLACE ± 0.2 ± --- ANGULAR ± 2 °	DIMENSION STYLE MM ONLY DRAWN BY DATE OSHEA 2011/03/09 CHECKED BY DATE DBYRNES 2011/03/09 APPROVED BY DATE EFOLAN 2011/03/29 MATERIAL NO.	SCALE 5:1 DESIGN UNITS METRIC THIRD ANGLE PROJECTION	TITLE IDT ASSEMBLY PICO FLEX (GLOW-WIRE) MOLEX INCORPORATED DOCUMENT NO.	SHEET NO. 1 OF 2
	DRAFT WHERE APPLICABLE MUST REMAIN WITHIN DIMENSIONS	SEE CHART	SIZE A3	THIS DRAWING CONTAINS INFORMATION THAT IS PROPRIETARY TO MOLEX INCORPORATED AND SHOULD NOT BE USED WITHOUT WRITTEN PERMISSION		
						SD-93338-001

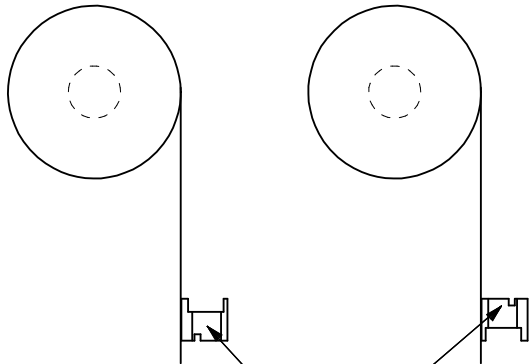
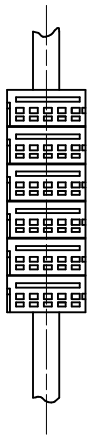
10 9 8 7 6 5 4 3 2 1

REELING OPTION A REELING OPTION B



NARROW POLARISING SLOT

REELING OPTION C REELING OPTION D



WIDE POLARISING SLOT

REEL ASSY NO.	PART NO.	CCT SIZE	REELING OPTION
93338-*351	93338-*304	4	A
↑ -*352	↑	↑	B
↓ -*353	↓	↓	C
93338-*354	93338-*304	4	D

REEL ASSY NO.	PART NO.	CCT SIZE	REELING OPTION
93338-*355	93338-*306	6	A
↑ -*356	↑	↑	B
↓ -*357	↓	↓	C
93338-*358	93338-*306	6	D

REEL ASSY NO.	PART NO.	CCT SIZE	REELING OPTION
93338-*359	93338-*308	8	A
↑ -*360	↑	↑	B
↓ -*361	↓	↓	C
93338-*362	93338-*308	8	D

REEL ASSY NO.	PART NO.	CCT SIZE	REELING OPTION
93338-*363	93338-*310	10	A
↑ -*364	↑	↑	B
↓ -*365	↓	↓	C
93338-*366	93338-*310	10	D

REEL ASSY NO.	PART NO.	CCT SIZE	REELING OPTION
93338-*367	93338-*312	12	A
↑ -*368	↑	↑	B
↓ -*369	↓	↓	C
93338-*370	93338-*312	12	D

REEL ASSY NO.	PART NO.	CCT SIZE	REELING OPTION
93338-*371	93338-*314	14	A
↑ -*372	↑	↑	B
↓ -*373	↓	↓	C
93338-*374	93338-*314	14	D

REEL ASSY NO.	PART NO.	CCT SIZE	REELING OPTION
93338-*375	93338-*316	16	A
↑ -*376	↑	↑	B
↓ -*377	↓	↓	C
93338-*378	93338-*316	16	D

REEL ASSY NO.	PART NO.	CCT SIZE	REELING OPTION
93338-*379	93338-*318	18	A
↑ -*380	↑	↑	B
↓ -*381	↓	↓	C
93338-*382	93338-*318	18	D

REEL ASSY NO.	PART NO.	CCT SIZE	REELING OPTION
93338-*383	93338-*320	20	A
↑ -*384	↑	↑	B
↓ -*385	↓	↓	C
93338-*386	93338-*320	20	D

REEL ASSY NO.	PART NO.	CCT SIZE	REELING OPTION
93338-*387	93338-*326	26	A
↑ -*388	↑	↑	B
↓ -*389	↓	↓	C
93338-*390	93338-*326	26	D

REEL ASSY NO.	PART NO.	CCT SIZE	REELING OPTION
93338-*391	93338-*322	22	A
↑ -*392	↑	↑	B
↓ -*393	↓	↓	C
93338-*394	93338-*322	22	D

REEL ASSY NO.	PART NO.	CCT SIZE	REELING OPTION
93338-*395	93338-*324	24	A
↑ -*396	↑	↑	B
↓ -*397	↓	↓	C
93338-*398	93338-*324	24	D

SEE SHEET 1 EC NO: IPG2012-1116 DRW: DBYRNES 2012/09/19 CHKD: APPR: STGRIFFIN 2012/11/06	QUALITY SYMBOLS ▽=0 ◻=0	GENERAL TOLERANCES (UNLESS SPECIFIED) <table border="1"> <thead> <tr> <th></th> <th>mm</th> <th>INCH</th> </tr> </thead> <tbody> <tr> <td>4 PLACES</td> <td>± ---</td> <td>± ---</td> </tr> <tr> <td>3 PLACES</td> <td>± ---</td> <td>± ---</td> </tr> <tr> <td>2 PLACES</td> <td>± 0.10</td> <td>± ---</td> </tr> <tr> <td>1 PLACE</td> <td>± 0.2</td> <td>± ---</td> </tr> </tbody> </table> ANGULAR ± 2 °		mm	INCH	4 PLACES	± ---	± ---	3 PLACES	± ---	± ---	2 PLACES	± 0.10	± ---	1 PLACE	± 0.2	± ---	DIMENSION STYLE MM ONLY DRAWN BY: DSHEA DATE: 2011/03/09 CHECKED BY: DBYRNES DATE: 2011/03/09 APPROVED BY: EFOLAN DATE: 2011/03/29	SCALE: 5:1 DESIGN UNITS: METRIC THIRD ANGLE PROJECTION	TITLE: IDT ASSEMBLY PICO FLEX (GLOW-WIRE) MOLEX INCORPORATED DOCUMENT NO. SD-93338-001
		mm	INCH																	
	4 PLACES	± ---	± ---																	
	3 PLACES	± ---	± ---																	
2 PLACES	± 0.10	± ---																		
1 PLACE	± 0.2	± ---																		
DRAFT WHERE APPLICABLE MUST REMAIN WITHIN DIMENSIONS	MATERIAL NO. SEE CHART	SHEET NO. 2 OF 2																		
THIS DRAWING CONTAINS INFORMATION THAT IS PROPRIETARY TO MOLEX INCORPORATED AND SHOULD NOT BE USED WITHOUT WRITTEN PERMISSION																				

9 8 7 6 5 4 3 2 1