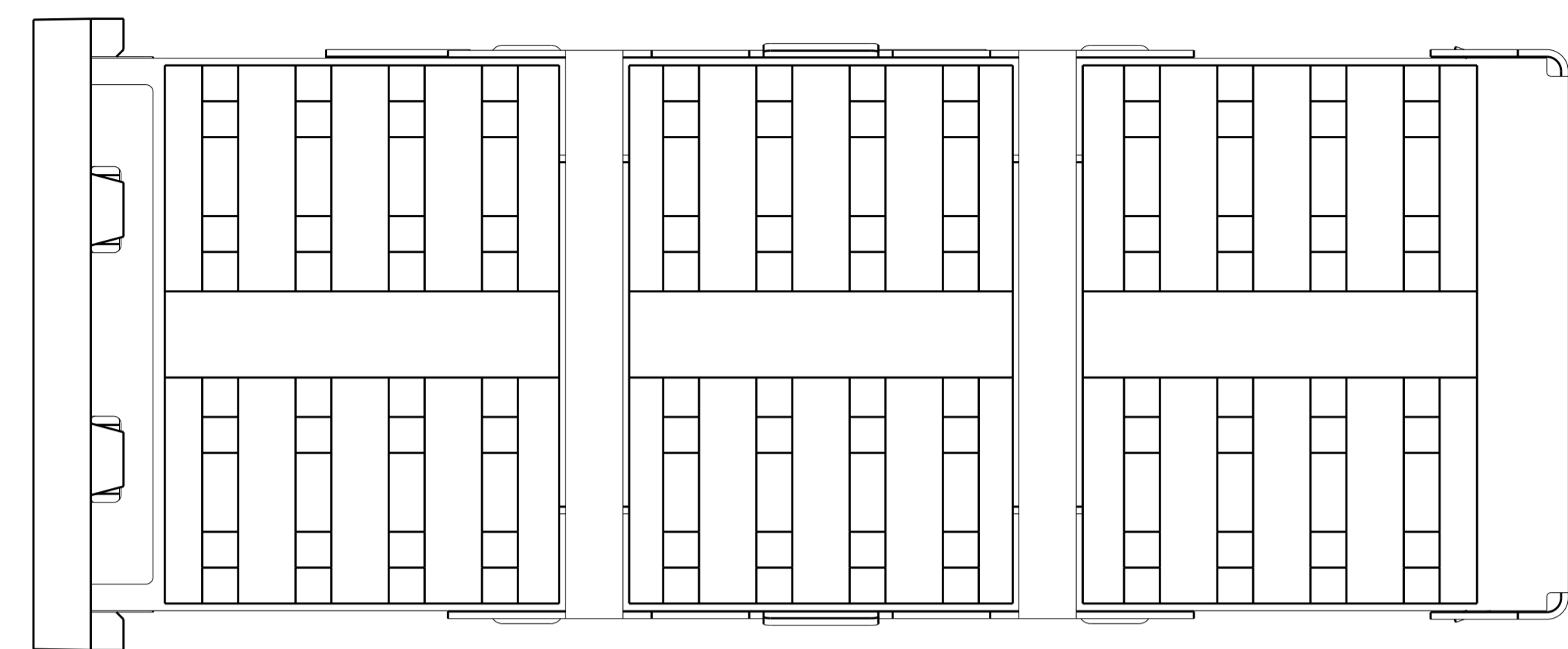
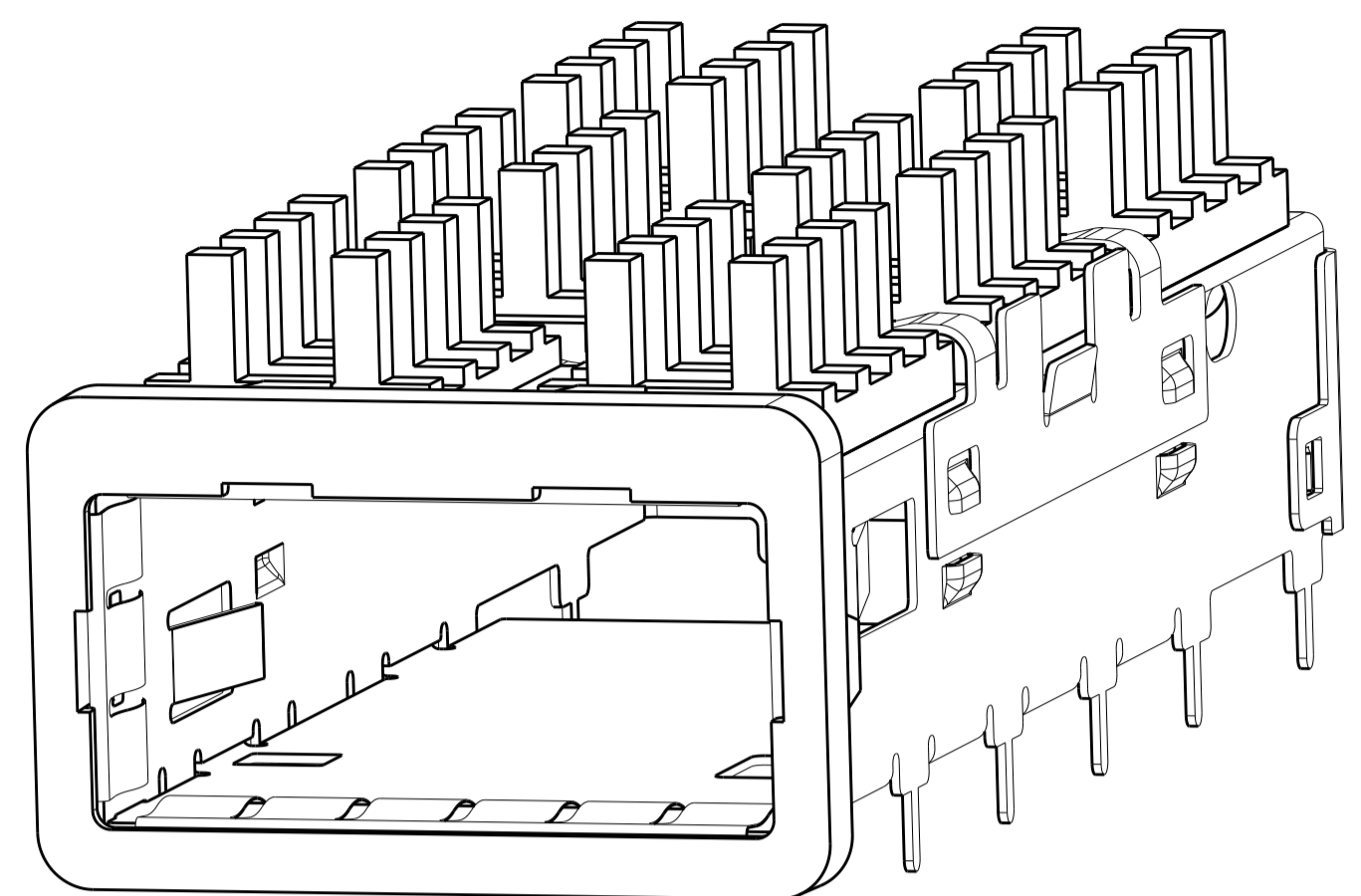
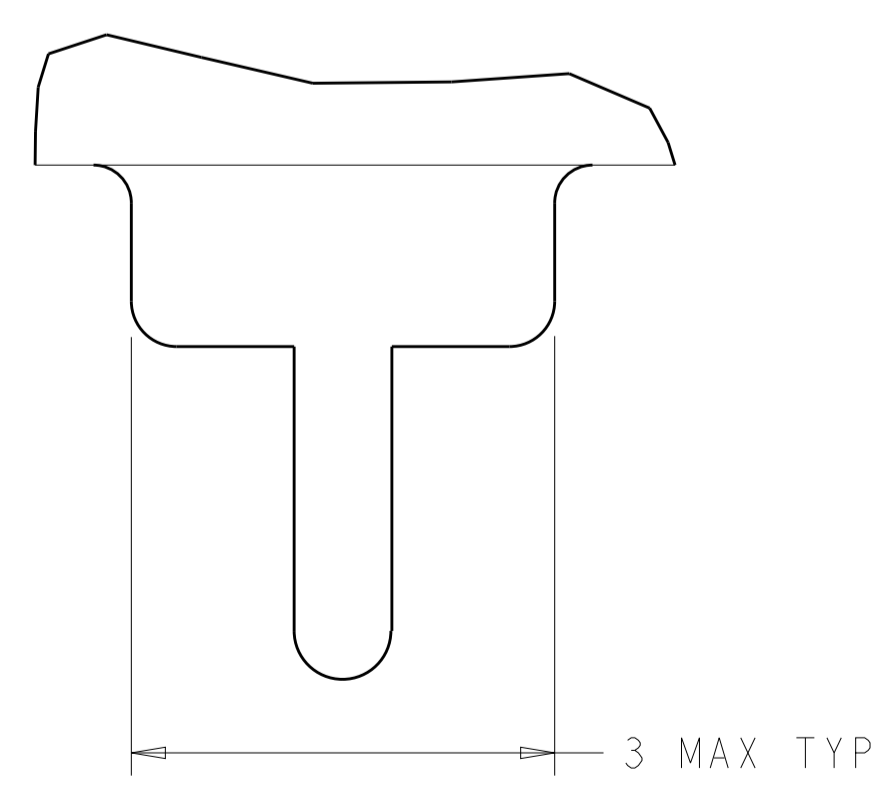
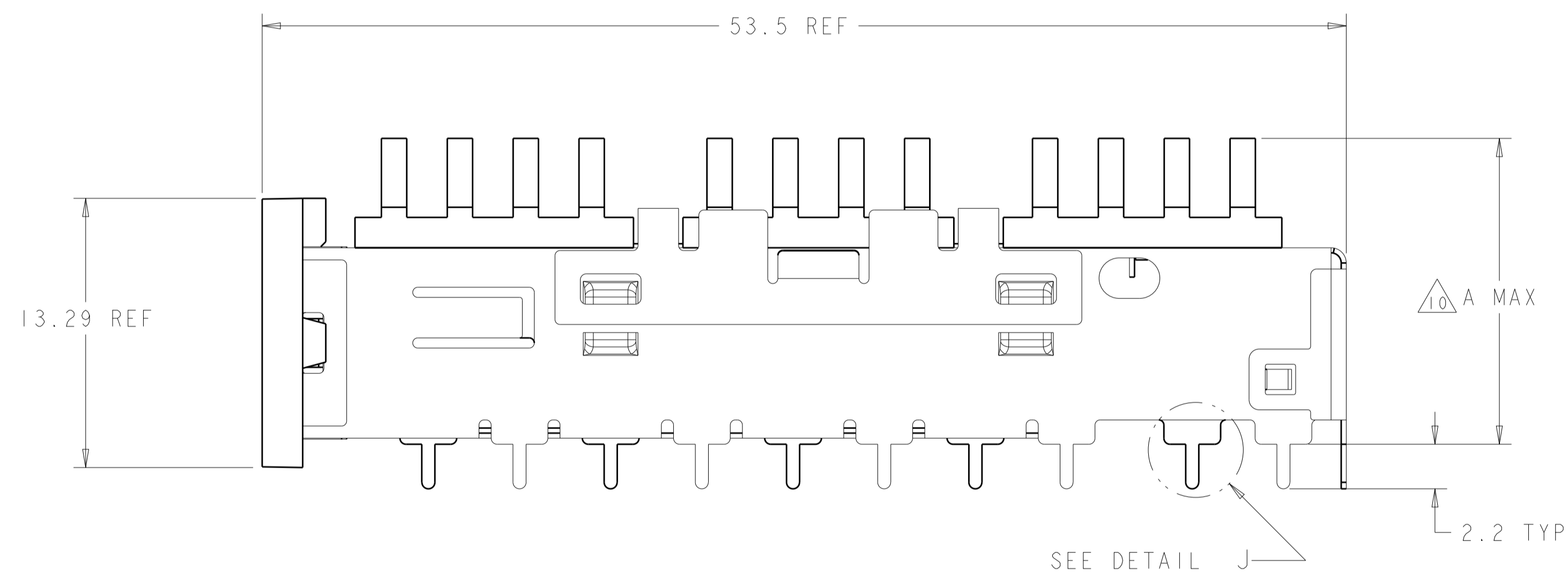
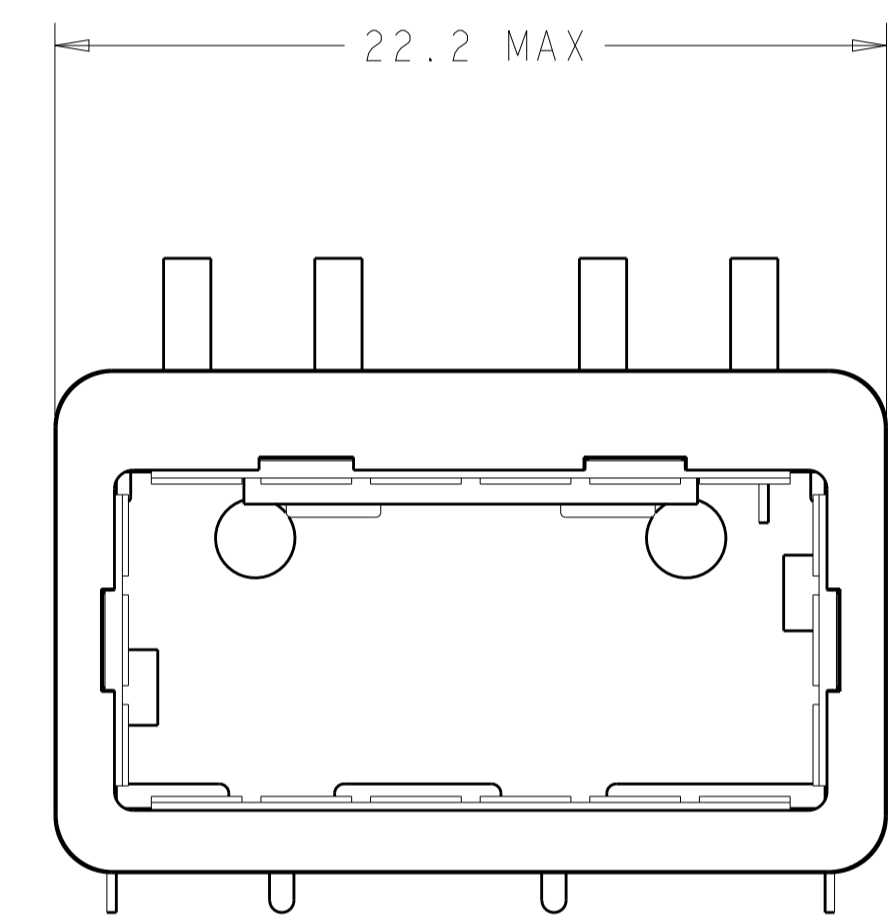


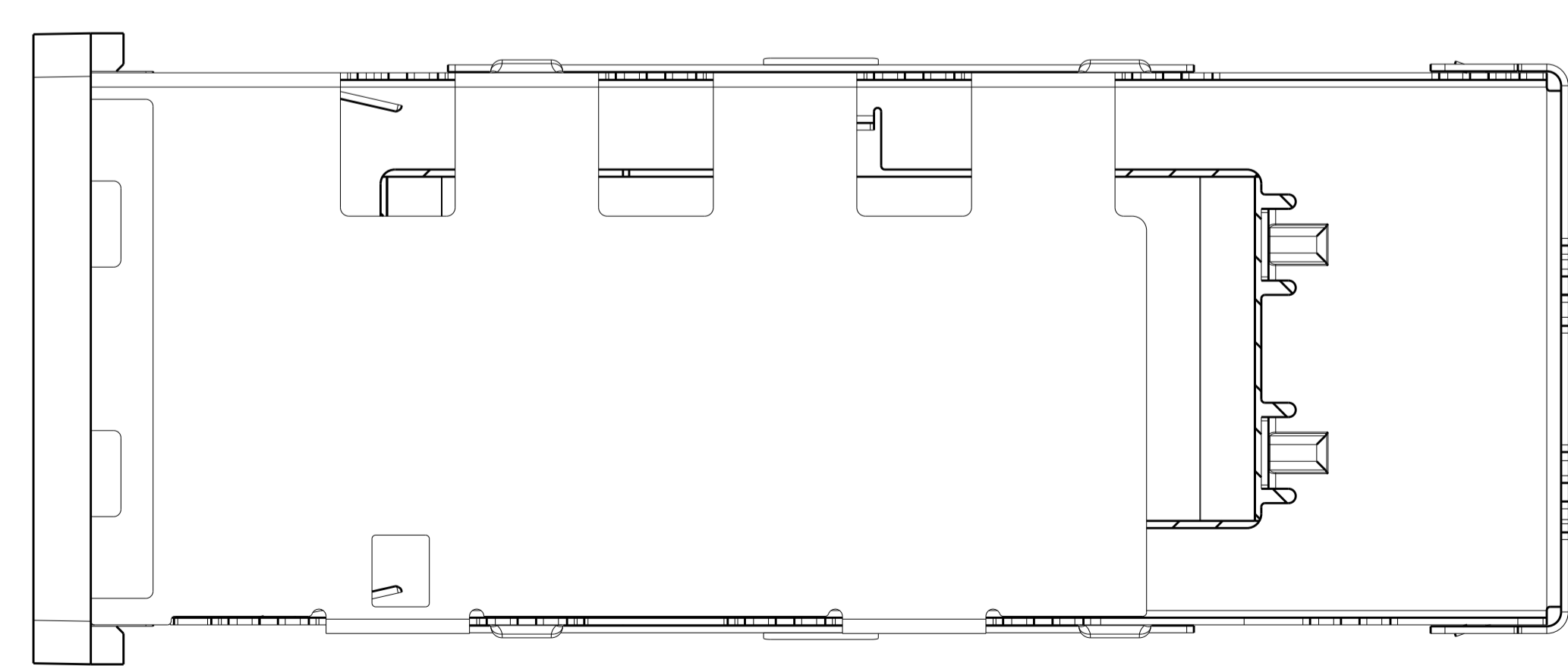
LOC	DIST	REVISIONS					
GP	00	P	LTN	DESCRIPTION	DATE	DWN	APVD
		I		PRELIMINARY	23AUG2012	DZ	JY



- △ CAGE MATERIAL: NICKEL SILVER, 0.25 THICK
 HEAT SINK MATERIAL: ALUMINUM
 HEAT SINK CLIP MATERIAL: STAINLESS STEEL
 EMI SPRING MATERIAL: COPPER ALLOY
 FRONT FLANGE MATERIAL: ZINC ALLOY
- △ MINIMUM PITCH DIMENSION.
- 3. MATES WITH QSFP MSA COMPATIBLE TRANSCEIVER.
- △ REFERENCE APPLICATION SPEC 114-13218 FOR RECOMMENDED DRILL HOLE DIAMETER AND PLATING THICKNESS.
- △ DATUMS AND BASIC DIMENSIONS ESTABLISHED BY CUSTOMER.
- △ DIMENSION C IS THE NOMINAL THICKNESS OF CUSTOMER SUPPLIED PC BOARD, SINGLE SIDED PC BOARD MINIMUM THICKNESS: 1.45
- △ HEAT SINK AND CLIP SHIPPED ASSEMBLED TO CAGE ASSEMBLY. CAGE ASSEMBLY MAY BE PRESSED INTO THE PCB AS SHIPPED.
- △ DATUM -A- IS TOP SURFACE OF HOST BOARD.
- △ SURFACE TRACES PERMITTED WITHIN THIS AREA EXCEPT WHERE CAGE STANDOFFS, SHOWN IN DETAIL J, CONTACT PC BOARD.
- △ DIMENSION APPLIES WITH MODULE INSTALLED IN THE CAGE.
- △ DATE CODE (YYWW) MARKED ON TOP OF CAGE AND CONCEALED BY HEAT SINK APPLIES TO CAGE ASSEMBLY ONLY.
- △ EMI SPRING FINISH: 2µm MIN TIN.
 FRONT FLANGE FINISH: 3µm MIN TIN OVER 1.27µm MIN NICKEL OVER 5.08µm MIN COPPER.
 HEAT SINK FINISH: 0.076µm MIN NICKEL.
- 13. PRODUCT HAS NOT COMPLETED QUALIFICATION TESTING.



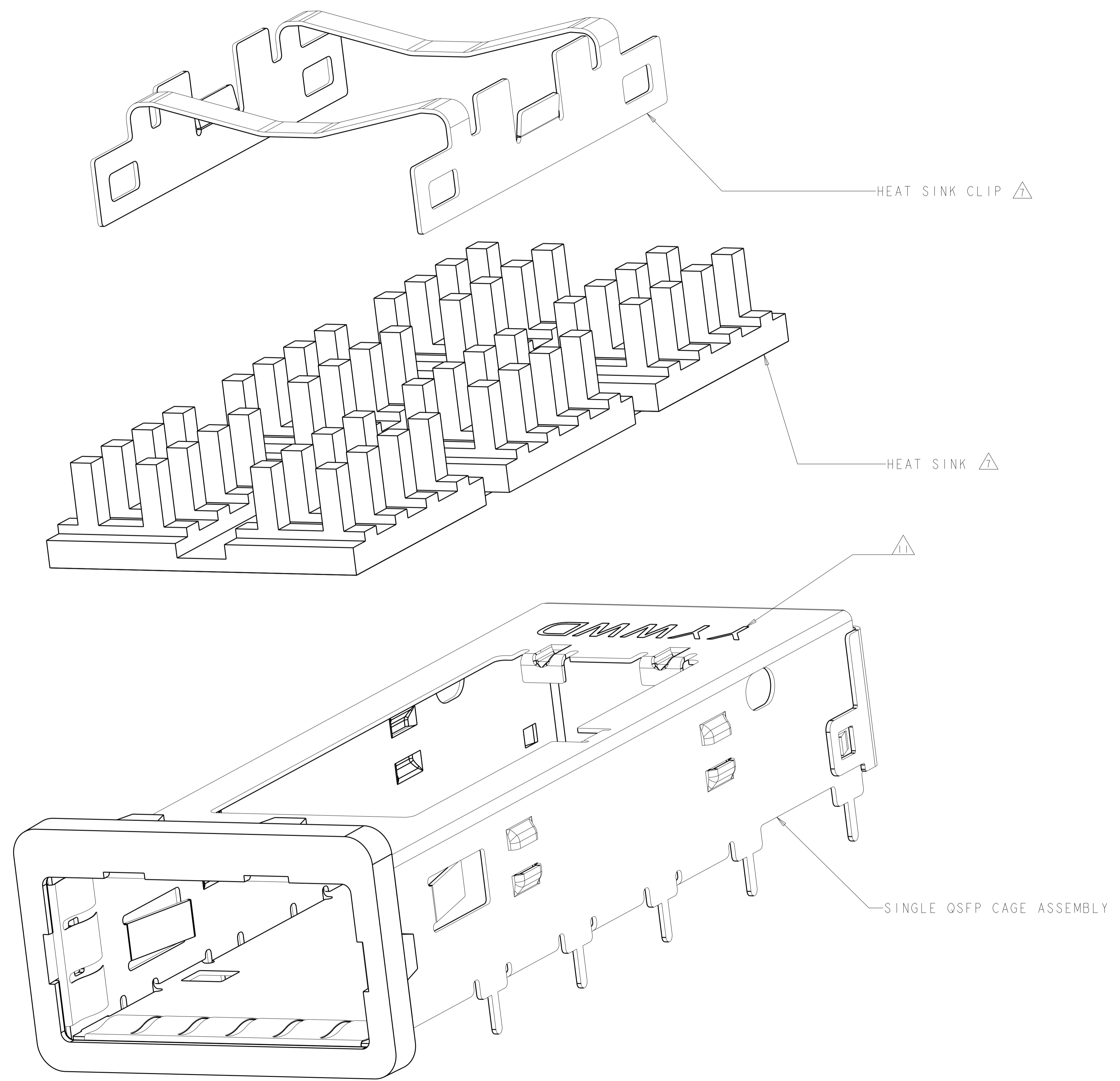
DETAIL J
 SCALE 20:1



DESIGN APPROVED THIS PRINT IS
PRELIMINARY
 TO FIRST PIECE APPROVAL
 CONTACT PRODUCT ENGINEERING
 BEFORE USING THIS PRINT

THIS DRAWING IS A CONTROLLED DOCUMENT.		DWN: D. ZHU 23AUG2012	13.7 PCI HEAT SINK		2170395-1
DIMENSIONS: mm		CHK: J. YANG 23AUG2012	DESCRIPTION		PART NUMBER
TOLERANCES UNLESS OTHERWISE SPECIFIED:		APVD: A. CAI 23AUG2012	CAGE ASSEMBLY, BEHIND BEZEL, QSFP WITH HEAT SINK		
0 PLC ±0.5	1 PLC ±0.13	PRODUCT SPEC 108-2286	SIZE: A1		CAGE CODE: 00779
2 PLC ±0.13	3 PLC ±0.013	APPLICATION SPEC 114-13218	DRAWING NO: C=2170395		RESTRICTED TO
4 PLC ±0.0001	ANGLES ±0.0001	WEIGHT	Customer Drawing		SCALE: 2:1 SHEET 1 OF 4 REV 1
MATERIAL: △		FINISH: △2			

LOC	DIST	REVISIONS			
P	LTN	DESCRIPTION	DATE	DMN	APVD
GP	00	SEE SHEET 1	-	-	-

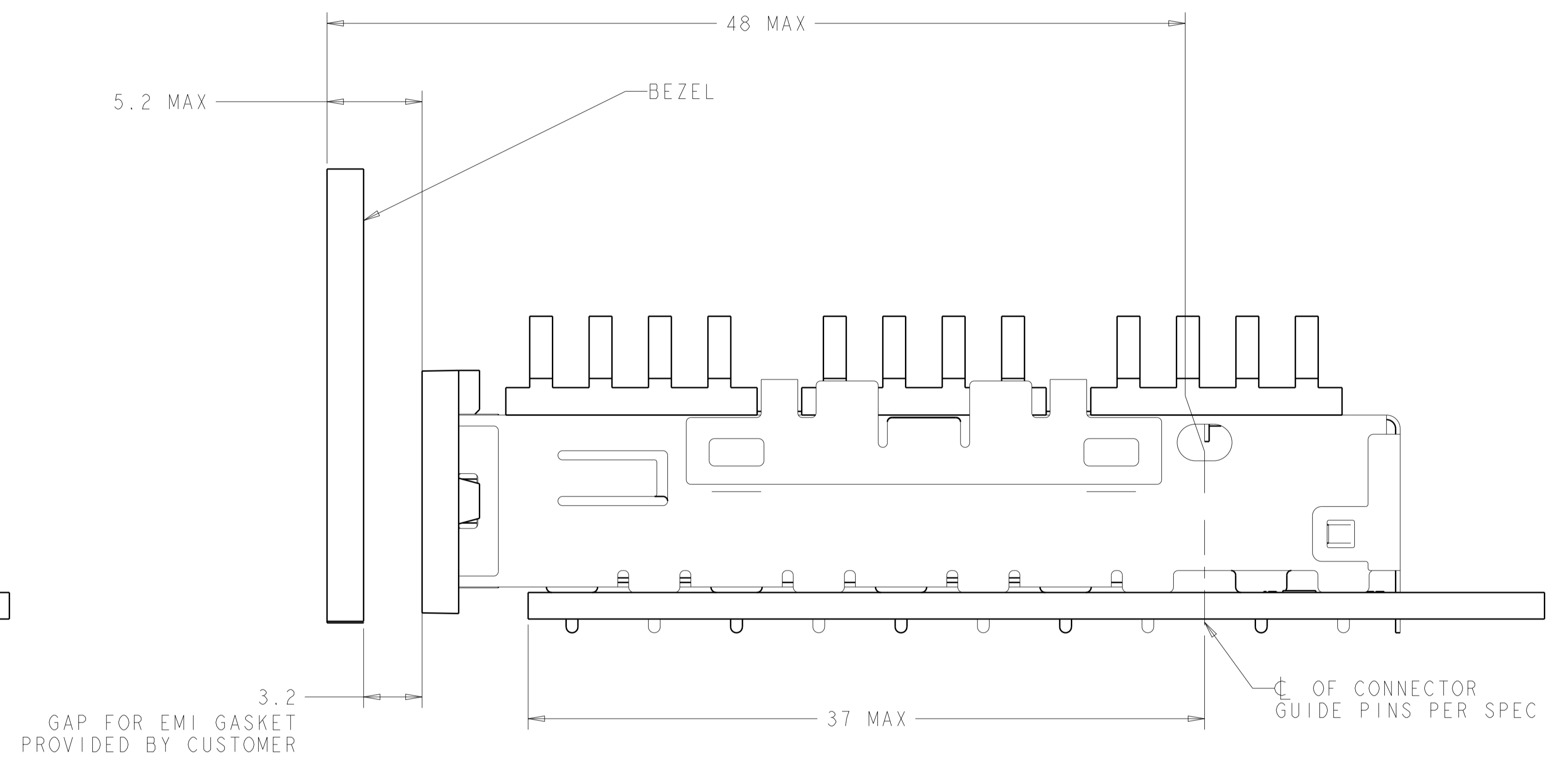
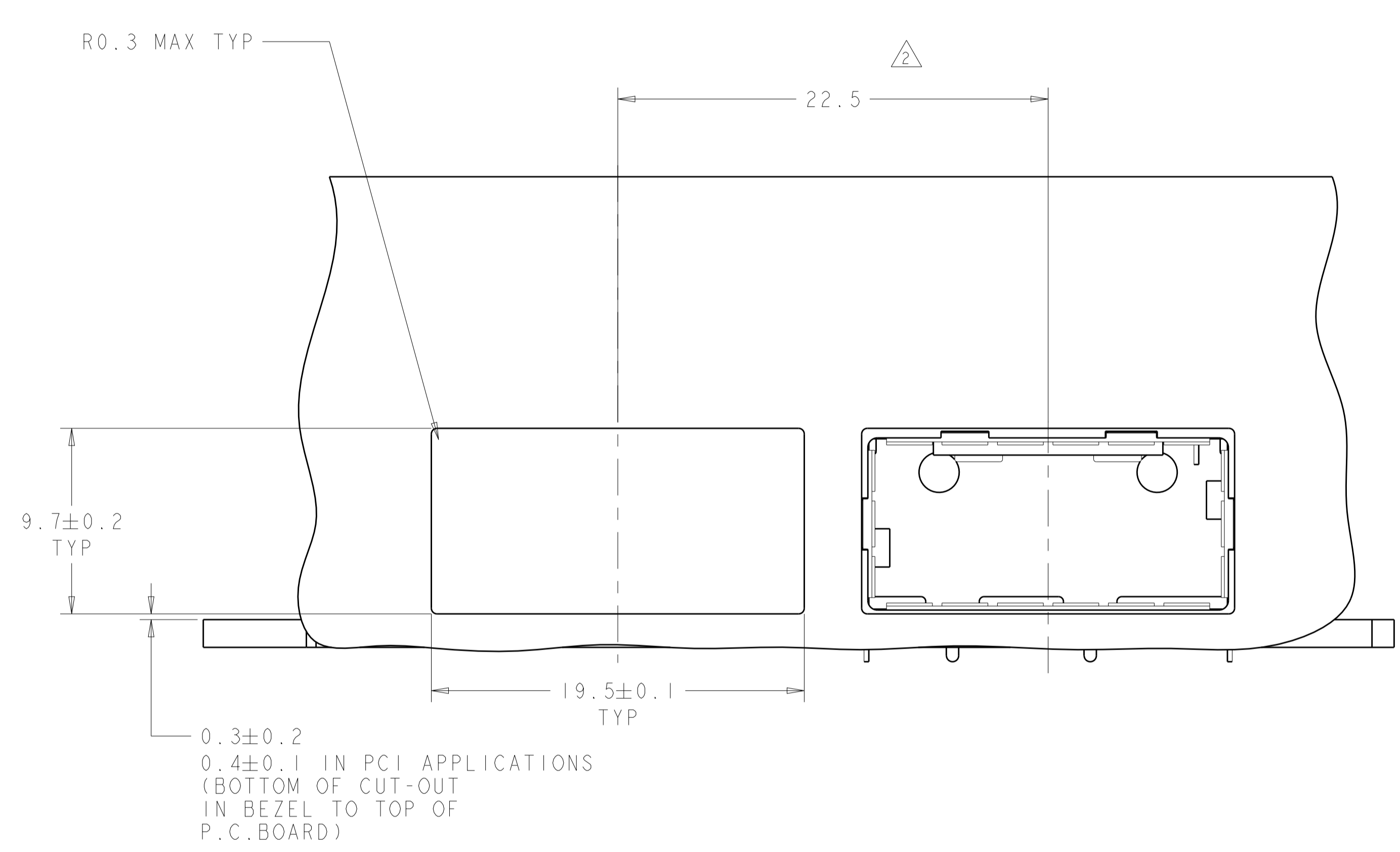


EXPLODED VIEW
 SCALE 8:1

DESIGN APPROVED THIS PRINT IS
PRELIMINARY
 TO FIRST PIECE APPROVAL
 CONTACT PRODUCT ENGINEERING
 BEFORE USING THIS PRINT

THIS DRAWING IS A CONTROLLED DOCUMENT.		DMN D. ZHU	23AUG2012	TE Connectivity NAME CAGE ASSEMBLY, BEHIND BEZEL, QSPF WITH HEAT SINK PRODUCT SPEC 108-2286 APPLICATION SPEC 114-13218 WEIGHT - Customer Drawing	RESTRICTED TO	
DIMENSIONS:		CHK J. YANG	23AUG2012		SIZE	A1
TOLERANCES UNLESS OTHERWISE SPECIFIED:		APVD A. CAI	23AUG2012		CAGE CODE	2170395
mm					SCALE	2:1
0 PLC ±0.5 2 PLC ±0.13 3 PLC ±0.013 4 PLC ±0.001 ANGLES ±0.001				SHEET	2 OF 4	
FINISH -				REV	1	

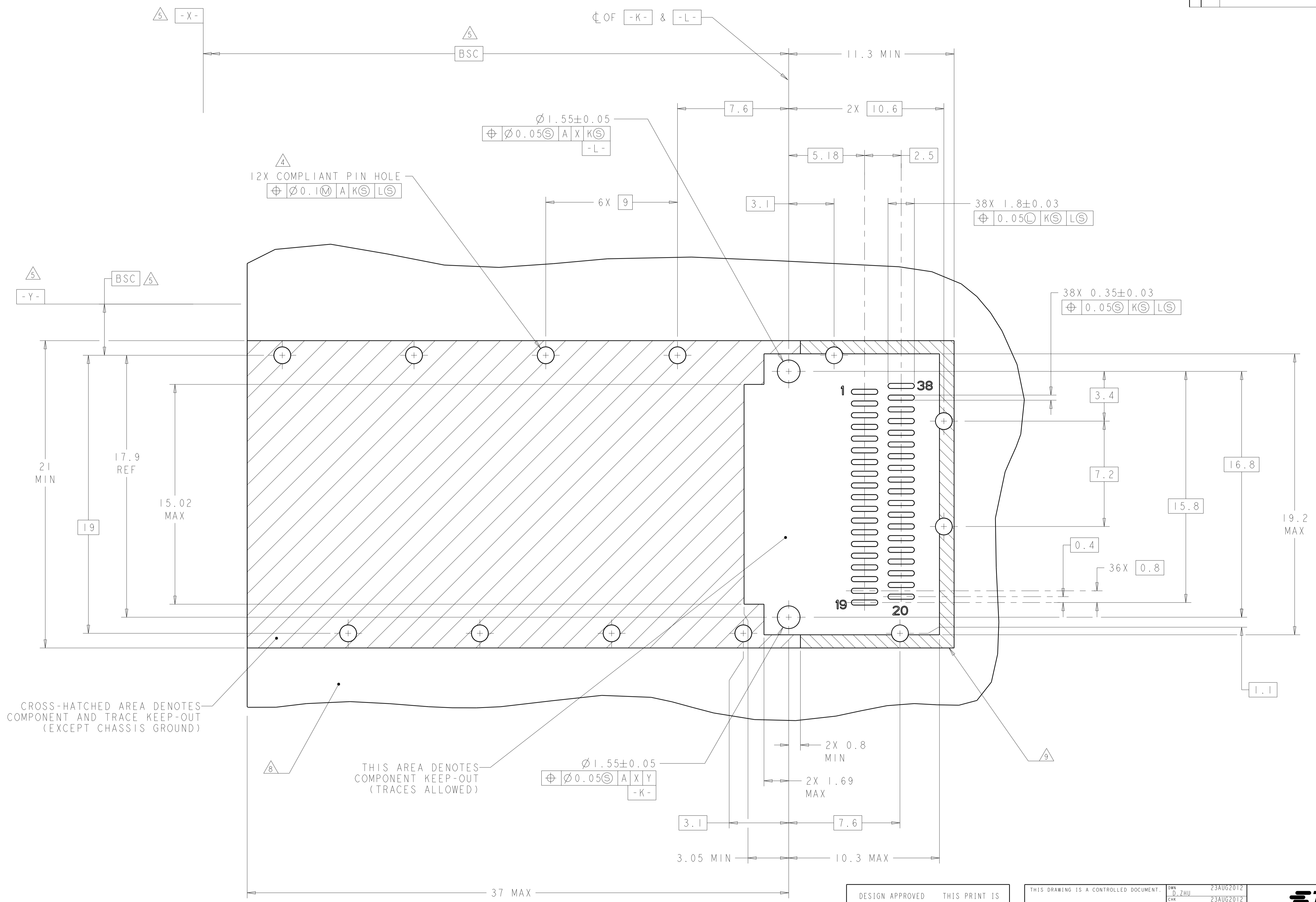
LOC	DIST	REVISIONS					
GP	00	P.	LTN	DESCRIPTION	DATE	DWN	APVD
-	-	-	-	SEE SHEET 1	-	-	-



DESIGN APPROVED THIS PRINT IS
PRELIMINARY
 TO FIRST PIECE APPROVAL
 CONTACT PRODUCT ENGINEERING
 BEFORE USING THIS PRINT

THIS DRAWING IS A CONTROLLED DOCUMENT.		DWN D. ZHU	23AUG2012		TE Connectivity
DIMENSIONS:		CHK J. YANG	23AUG2012		NAME CAGE ASSEMBLY, BEHIND BEZEL, QSFP, WITH HEAT SINK
TOLERANCES UNLESS OTHERWISE SPECIFIED:		APVD A. CAI	23AUG2012	SIZE A1	
mm	0 PLC ±0.5	PRODUCT SPEC		DRAWING NO 2170395	
	1 PLC ±0.5	APPLICATION SPEC		SCALE 2:1	
	2 PLC ±0.13	MATERIAL		SHEET 3 OF 4	
	3 PLC ±0.013	FINISH		REV 1	
	4 PLC ±0.0001	WEIGHT		Customer Drawing	
	ANGLES ±0.0001	Customer Drawing		Customer Drawing	

LOC	DIST	REVISIONS					
		P	LTN	DESCRIPTION	DATE	DWN	APVD
GP	00	-	-	SEE SHEET 1	-	-	-



CROSS-HATCHED AREA DENOTES COMPONENT AND TRACE KEEP-OUT (EXCEPT CHASSIS GROUND)

THIS AREA DENOTES COMPONENT KEEP-OUT (TRACES ALLOWED)

$\phi 1.55 \pm 0.05$
 $\phi 0.05$ A X Y
 -K-

RECOMMENDED PCB LAYOUT
 SINGLE SIDED CONFIGURATION
 SCALE 8:1

DESIGN APPROVED THIS PRINT IS
PRELIMINARY
 TO FIRST PIECE APPROVAL
 CONTACT PRODUCT ENGINEERING
 BEFORE USING THIS PRINT

THIS DRAWING IS A CONTROLLED DOCUMENT.		DWN: D. ZHU 23AUG2012	TE Connectivity
DIMENSIONS: mm		CHK: J. YANG 23AUG2012	
TOLERANCES UNLESS OTHERWISE SPECIFIED:		APVD: A. CAI 23AUG2012	NAME: CAGE ASSEMBLY, BEHIND BEZEL, QSFP WITH HEAT SINK
0 PLC	±0.5	PRODUCT SPEC	SIZE: A1
1 PLC	±0.13	108-2286	CAGE CODE: 2170395
2 PLC	±0.013	APPLICATION SPEC	RESTRICTED TO: -
3 PLC	±0.013	114-13218	SCALE: 2:1
4 PLC	±0.001	WEIGHT: -	SHEET: 4 OF 4
ANGLES	±0.0001	Customer Drawing	REV: 1