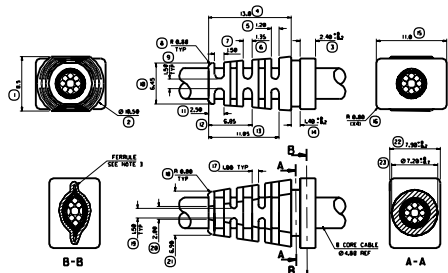


22918-000
CS 7850-000



- NOTES:
1. MATERIAL IS 6061 TITANIUM (RHS) (P/N 1) IS 619-D.
 2. CORE CABLE IS 1/2" DIA. (P/N 1) 5952-0001.
 3. CABLE SHOULD BE ON 5 CORE CABLE (ES-9903-0044).
 4. FEMALE PART NO. 50913-0004.
 5. ALL UNDETERMINED PARTS TO BE 0-300.
 6. LAST INSPECTION NUMBER.

FOR ANY DIMENSIONS
SEE DRAWING
FOR TOLERANCES
SEE NOTE 6.

OVERHAUL CRIMPET

OP. 16/87/24

FORM NO.	REV.	DATE	BY	CHKD.	APPR.
22918-000	1				

CABLE SPECIFICATION

FORM NO. 22918-000

SCALE: 1/2" = 1"

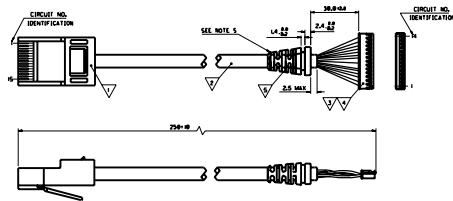
SEP 1987

FORM NO.	REV.	DATE	BY	CHKD.	APPR.
22918-000	1				

CABLE SPECIFICATION

FORM NO. 22918-000

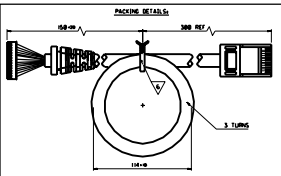
SEP 1987



FORM NO.	REV.	DATE	BY	CHKD.	APPR.
22918-000	1				

CABLE SPECIFICATION

FORM NO. 22918-000



- MEANS:
1. SEE PROJECT SPECIFICATION NO. PS-9902-0018.
 2. ONLY AVAILABLE FROM MOLEX AS PART OF A CABLE ASSEMBLY.
 3. SUPPLIER OR CUSTOMER APPROVED EQUIVALENT.
 4. ASSEMBLY TESTED FOR SHORTS AND DISCONTINUITIES BETWEEN ALL CIRCUITS.
 5. OVERHAUL WITH FEMALE.

CIRCUIT NO.	CONDUCTOR NO.	CIRCUIT NO.
1	1	1
2	2	2
3	3	3
4	4	4
5	5	5
6	6	6
7	7	7
8	8	8
9	9	9
10	10	10
11	11	11
12	12	12
13	13	13
14	14	14
15	15	15

UPDATES PART NO.
FROM
CIRCUIT
DRAWING

211
AACCANN 26/6/84
MOURRAN 26/6/85
MV 26/6/85
5926016.D0N 52601-005 50-92601-013 10F 1

REV.	DATE	BY	CHKD.	APPR.	DESCRIPTION OF MOD.
EM041	1	26.06.24	AMG		ORIGINAL RELEASE
EM050	5	30.06.20	CT		UPDATED PART NO'S & TITLE

LEVEL CHART



FORM NO.	REV.	DATE	BY	CHKD.	APPR.
22918-000	1				

CABLE SPECIFICATION

FORM NO. 22918-000