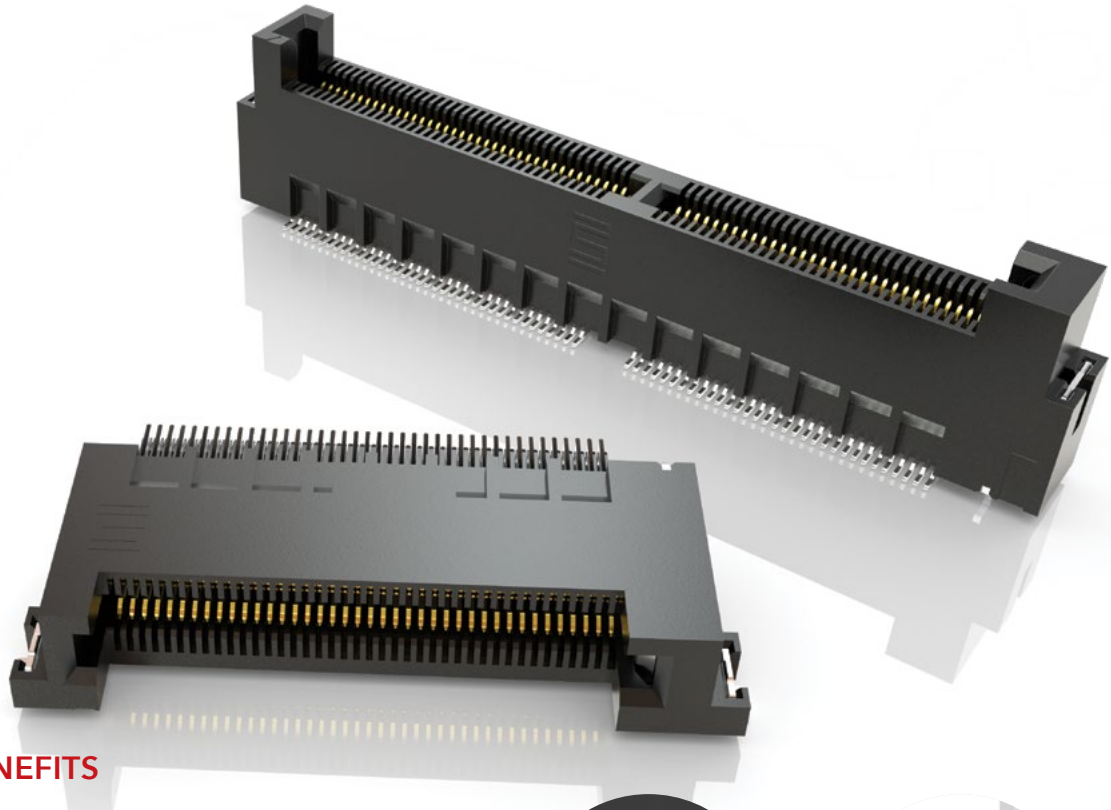


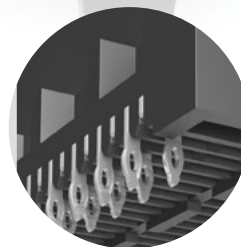
# MICRO EDGE CARD SYSTEMS

0.50 mm, 0.635 mm, 0.80 mm, 1.00 mm, 1.27 mm, 2.00 mm PITCH

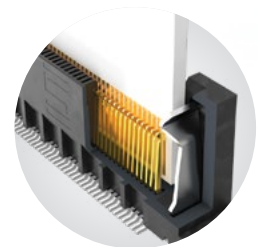


## FEATURES & BENEFITS

- Up to 56 Gbps PAM4
- PCI Express® 4.0 (MEC5 Series)
- Solutions for .062" (1.60 mm), and .093" (2.36 mm) thick cards
- Choice of pitch: 0.50 mm, 0.635 mm, 0.80 mm, 1.00 mm, 1.27 mm, 2.00 mm
- Vertical, right-angle, edge mount
- Available in surface mount and through-hole



Staggered press-fit tails  
(MEC8-VP)



Justification beam ensures  
card and body are flushed  
(MEC5)

## KEY SPECIFICATIONS

SERIES	PITCH	TOTAL POSITIONS	INSULATOR MATERIAL	CONTACT MATERIAL	OPERATING TEMP RANGE	CURRENT RATING	VOLTAGE RATING	LEAD-FREE SOLDERABLE
MEC5	0.50 mm	60-200	Black LCP	Phosphor Bronze	-55 °C to +125 °C	1.5 A (2 pins)	125 VAC	Yes
MEC6	0.635 mm	20-140	Black LCP	Phosphor Bronze	-55 °C to +125 °C	2.4 A (2 pins)	195 VAC	Yes
MEC8	0.80 mm	20-140	Black LCP	Phosphor Bronze	-55 °C to +125 °C	1.8 A (4 pins)	185 VAC	Yes
MEC1	1.00 mm	20-140	Black LCP	Phosphor Bronze	-55 °C to +125 °C	2.2 A (2 pins)	250 VAC	Yes
MECF	1.27 mm	10-100	Black/Natural LCP	BeCu	-55 °C to +125 °C	3.5 A (2 pins)	280 VAC	Yes
MEC2	2.00 mm	10-100	Black/Natural LCP	BeCu	-55 °C to +125 °C	3.5 A (2 pins)	238 VAC	Yes

**(0.80 mm) .0315" PITCH • VERTICAL AND PRESS-FIT EDGE CARD SOCKET**

**MEC8** - **1** POSITIONS PER ROW - **02** PLATING OPTION - **DV** OTHER OPTIONS - **"X"R**

10, 20, 30, 40,  
50, 60, 70

**-L**  
= 10 μ" (0.25 μm)  
Gold on contact,  
Matte Tin on tail

**-A**  
= Alignment Pin

**-K**  
= (5.50 mm) 2.17" DIA  
Polyimide Pick  
& Place Pad

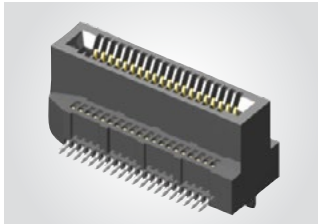
Leave blank for  
Tray Packaging

**-TR**  
= Tape & Reel

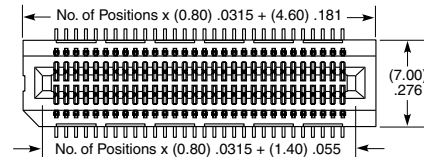
**-FR**  
= Full Reel  
Tape & Reel  
(must order max.  
quantity per reel;  
contact Samtec for  
quantity breaks)

**MEC8-DV**

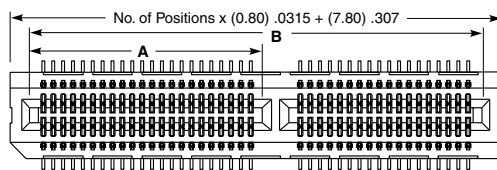
Card Mates:  
(1.60 mm) .062"  
thick card



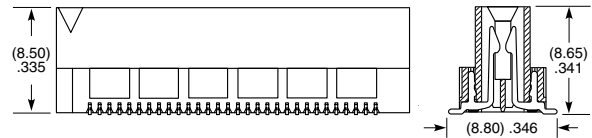
POSITIONS PER ROW	A	B
40	(18.90) .744	(36.60) 1.441
50	(22.90) .902	(44.60) 1.756
60	(26.90) 1.059	(52.60) 2.071
70	(30.90) 1.217	(60.60) 2.386



10, 20, & 30 POSITIONS



40, 50, 60 & 70 POSITIONS



View complete specifications at: [samtec.com?MEC8-DV](http://samtec.com?MEC8-DV)

**MEC8** - **1** POSITIONS PER ROW - **02** CARD THICKNESS - **-L** PLATING OPTION - **-VP** TAIL

10, 20, 30, 40

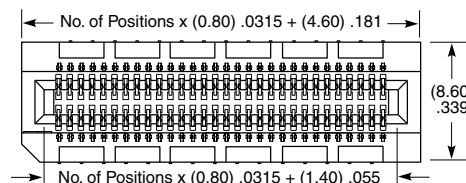
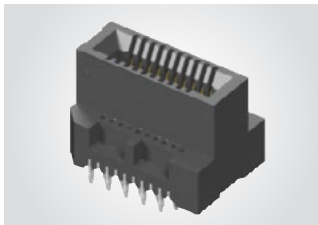
**-02**  
= (1.60 mm) .062"  
thick card

**-L**  
= 10 μ" (0.25 μm)  
Gold on contact,  
Matte Tin on tail

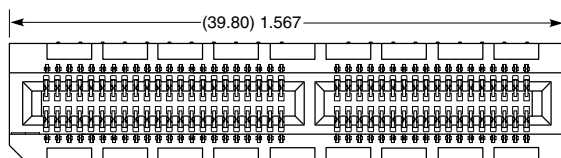
**-VP**  
= Press-fit

**MEC8-VP**

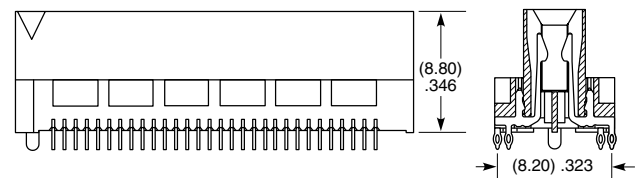
Card Mates:  
(1.60 mm) .062"  
thick card



10, 20 & 30 POSITIONS



40 POSITIONS



**Note:**  
Some sizes, styles and  
options are non-standard,  
non-returnable.

View complete specifications at: [samtec.com?MEC8-VP](http://samtec.com?MEC8-VP)