

6

5

4

3

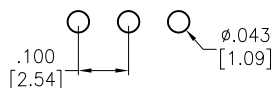
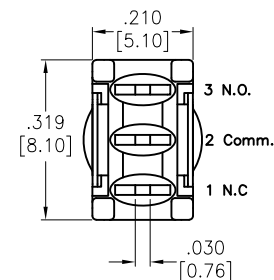
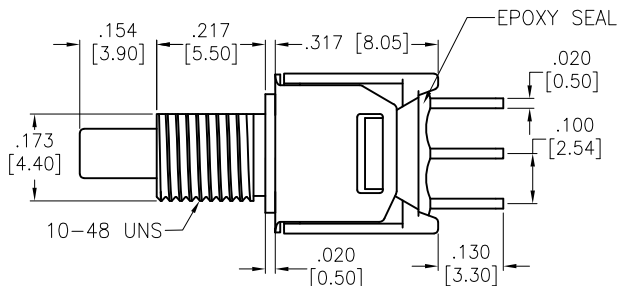
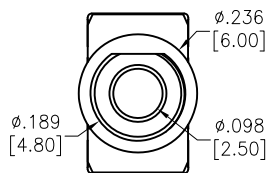
2

1

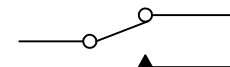
APPROVED: _____

DATE: _____ TITLE: _____

Rev	AWO #	Description	Date	Appr
-		RELEASED	3/5/21	



RECOMMENDED PCB LAYOUT



CIRCUIT DIAGRAM (SPDT) ON-MOMENTARY

SPECIFICATIONS:

Material:

Movable Contact: Copper Alloy, Silver Plated

Terminal: Copper Alloy, Silver Plated

Electrical:

Rating: 1 Amps with resistive load @ 125VAC or 28VDC

Contact resistance: 20 mΩ max

Insulation resistance: 1,000 Mohms min

Dielectric withstanding voltage: 1,500V RMS @Sea level

Temperature Rating:

Operating temperature: -30°C to +85°C

Environmental:

Lead free, RoHS compliant



UNLESS OTHERWISE SPECIFIED ALL DIMENSIONS ARE INCHES [MM] TOLERANCES: EXCEPT AS NOTED INCHES HOLES .X ± .10 Ø.X ± .10 .XX ± .020 Ø.XX ± .015 .XXX ± .015 Ø.XXX ± .010		ADAM TECH 909 Rahway Avenue, Union, NJ 07083 Phone: 908-687-5000 Fax: 908-687-5710	
APPROVALS DRAWN WX 3/5/21 CHECKED AC 3/5/21 APPROVED		TITLE PUSHBUTTON SWITCH, ON-MOMENTARY, SPDT COPPER ALLOY SILVER PLATED, PCB TYPE	
SIZE X	PART NO. SW-PB9-AA00BQE-5	REV. -	REF: S00198T SCALE: NTS SHEET 1 OF 1

6

5

4

3

2

1