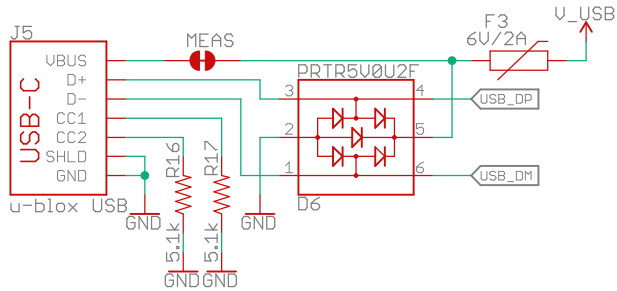
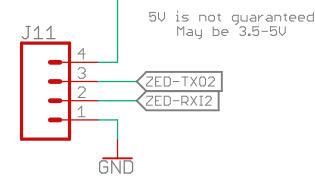
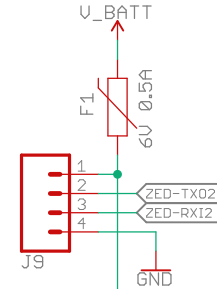
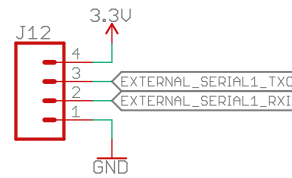
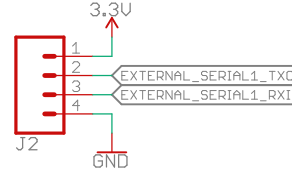


### USB / Power

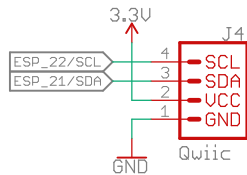


### External Radio RTCM In/Out

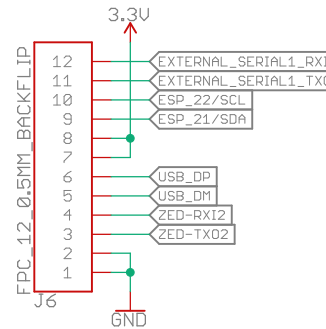
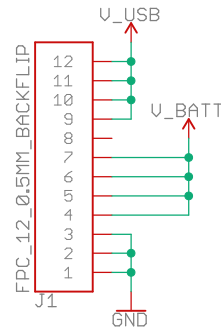
#### Serial Config NMEA Out



### Qwiic



### To Main Board



open hardware



Released under the Creative Commons Attribution Share-Alike 4.0 License

<https://creativecommons.org/licenses/by-sa/4.0/>



TITLE: SparkFun RTK Facet - External Connector

Design by: N. Seidle

REV:  
v12

Date: 12/3/2021 11:58 AM

Sheet: 1/1