

2300, 2401 & 2701 Series

Mechanical Length Measuring Unit



Heavy duty measuring unit, dual measuring wheels for better stability and contact, frame/bulkhead mounted.

These rugged instruments have a wide range of applications where an accurate record of length is required. They are strong, heavy duty units for use on calendars, tenters, rolling, ribbon winding, textile machinery and almost all other continuous manufacturing processes. The 2701 (twin wheel) and the 2401 (single wheel) units are mounted or hung from a supplied stay rod, 17.99" (457mm). The 2300 bolts directly onto a bulkhead or frame member. All other models incorporate a hinge arrangement on the stayrod so they can be positioned at any angle. Incorporates the 3602 counter and measuring wheels.

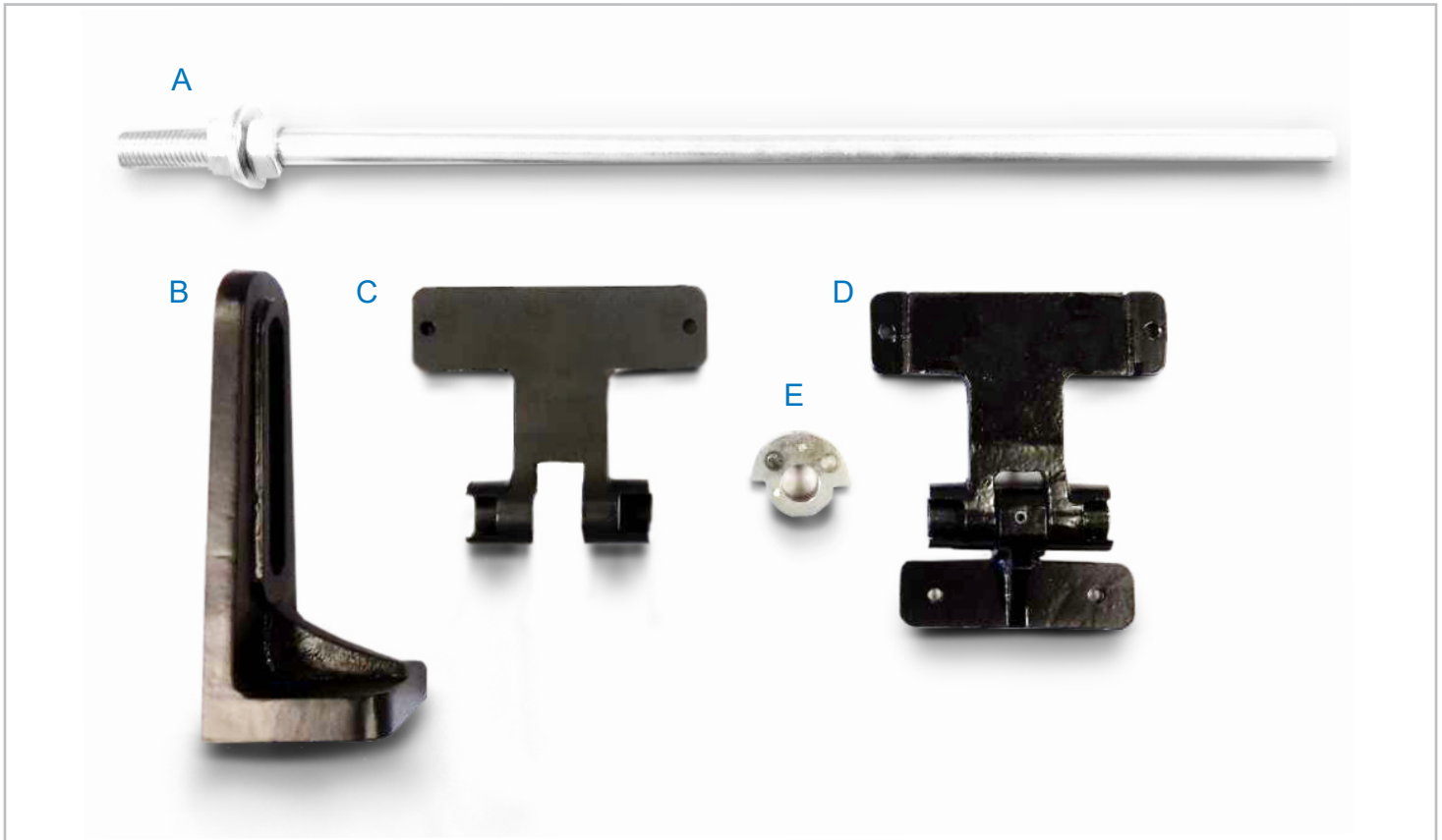
Key Features

- Uses standard measuring wheels
- Can be tilted out of the way when not in use
- The 2300 bolts directly onto a bulkhead or frame member
- The integral hinge arrangement allows the unit to be positioned at any angle
- The measuring wheels supplied can be 0.5m or 0.3m (18in or 12in) circumference (specify when ordering)
- The weight of the assembly holds it in contact with the material being measured

Specification

Display	6 digit 0.25" (6.4mm)
Measurement Options	Imperial or metric
Max speed of travel	3,000 RPM Mechanical
Accuracy	+/- 1%
Shaft Diameter	7mm
Units of Measurement	Metres/centimeters, yards/eighths or feet/inches <i>(other measurements may be available to special order)</i>
Packed Dimensions	2300: 180mm (7.09in) x 200mm (7.87in) x 270mm (10.63in) 2401/2701: 500mm (19.69in) x 250mm (9.81in) x 100mm (3.94in)
Nett Weight	2300: 2.81lb (1.3kg) 2401: 3.74lb (1.7kg) 2701: 4.4lb (2.0kg)

2300 / 2401 / 2701 Subassemblies



Part Numbers

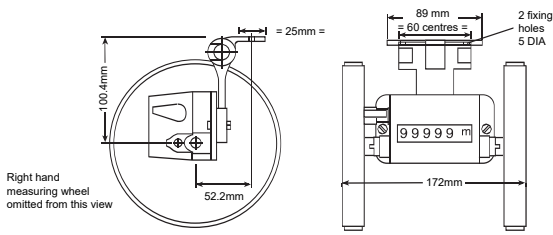
A	007628-02	STAYROD 460mm (18") long, 14mm Ø
B	001647-01	STAND (2401, 2701) for use with stayrod
C	001667-01	COUNTER BRACKET (2401, 2701) for use with stayrod
D	005697-01	COUNTER BRACKET AND HINGE (2300)
E	007628-03	LUG

OTHER PARTS

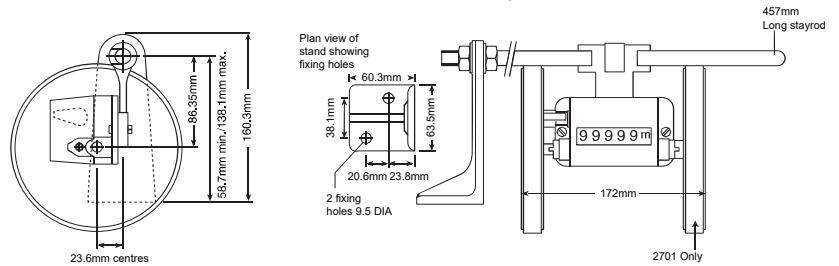
005697-03	COMPLETE MOUNTING ARRANGEMENT (2401, 2701)
016390-01	WHEEL FIXING BUSHING KIT 3 sizes
001921-36	7mm TONGUE BUSHING
019281-02	3602 RESET KIT (handle, shaft, springs)
020655-01	RESET HANDLE

Dimensions

Product Dimensions 2300



Product Dimensions 2401 | 2701



Length Measuring Ordering Information

To order a 2300, 2401 or 2701:

1. Select from the three different basic units,
2. Select the wheel surface type
3. Select the wheel circumference from option
4. Select the unit of measurement
5. Select the direction of travel

1. Select one of the units available from below

- 2300** Measuring counter with hinged bracket and two wheels
- 2401** Measuring counter with stand, stay rod, counter mounting bracket and one wheel
- 2701** Measuring counter with stand, stay rod, counter mounting bracket and two wheels

2. Select one of the measuring wheels listed below

- 1** Rubber covered plastic wheel(s)
- 5** Knurled aluminium wheel(s)*
- *(only available in 12" and 18" sizes)

3. Select the circumference for the wheel(s)

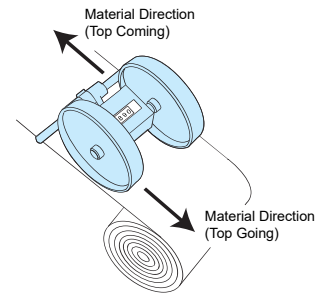
- 1** 1/2 metre wheel(s)
- 2** 1/3 metre wheel(s)
- 3** 18 inch wheel(s)
- 4** 12 inch wheel(s)

4. Select reading

- MY** Yards & 1/8ths
- MFY** Full Yards
- MF** Feet & Inches
- MFF** Full Feet
- MC** Metres & Centimeters
- MFM** Full Metres

5. Select direction of travel

- C** Top coming
- G** Top going



Example of full order code

2701 Unit (stand, stayrod and 2 wheels) with 18" rubber covered plastic wheels, reading yards & 1/8ths, direction top going.

The full order code is: **2701-13MYG**

Measuring Wheel Ordering Information

Material	Width	12" circumference	18" circumference	1/3m circumference	1/2m circumference
Rubber Covered Plastic	3/4" (19mm)	007571	007573	007905	007574
Knurled Aluminum	3/4" (19mm)	001558	001622		

